



Stokesley Crescent, Billingham

Billingham



In Excess of £160,000



Stokesley Crescent

Billingham

Immaculately presented, this three-bedroom mid-terrace property boasts a modern interior that has been refurbished to a high standard, making it perfect for first-time buyers and families alike. The spacious garden building is a standout feature, offering endless possibilities as a home office or gym. The unique addition of a sauna and free-standing bath in the garden room provides a touch of luxury and relaxation right at your fingertips.

As you arrive at the property, you are greeted by a large patterned concrete driveway, ensuring ample parking space for multiple vehicles. The property also benefits from gas central heating and air conditioning units in both the main home and garden room, guaranteeing comfort throughout all seasons. Situated just off Central Avenue, this residence offers convenient access to local amenities and excellent transport links. The accommodation comprises an entrance hall, lounge, kitchen/diner, landing, shower room, and three bedrooms, providing ample space for comfortable living.

Step into the stunning outdoor space, where the possibilities are endless. The expansive garden area is perfect for outdoor entertaining or simply relaxing in the sun. The garden building, fully equipped with a sauna and free-standing bath, provides a unique retreat right at your doorstep. With the convenience of a modern interior, luxurious features, and a prime location, this property offers a blend of comfort, style, and functionality for the discerning buyer. Don't miss out on the opportunity to make this remarkable residence your own.

Council Tax band: A

Tenure: Freehold

EPC Energy Efficiency Rating: C

EPC Environmental Impact Rating: C



Entrance Hall

Lounge

16' 4" x 11' 4" (4.98m x 3.45m)

Kitchen / Diner

17' 1" x 14' 10" (5.20m x 4.51m)

Landing

Bathroom

4' 8" x 8' 3" (1.43m x 2.52m)

Bedroom One

11' 1" x 11' 5" (3.38m x 3.49m)

Bedroom Two

11' 0" x 11' 4" (3.36m x 3.46m)

Bedroom Three

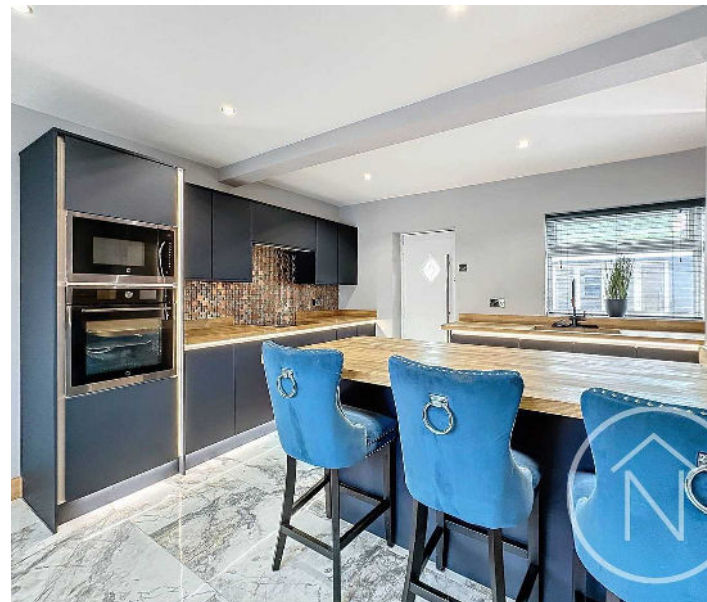
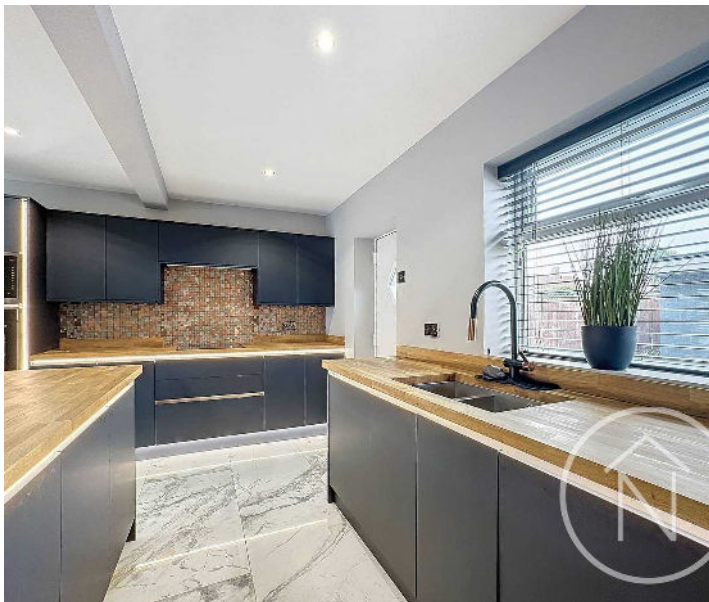
7' 0" x 12' 8" (2.13m x 3.85m)

Games Room / Home Office / Gym

20' 8" x 11' 8" (6.31m x 3.55m)

Sauna / Bathroom

16' 8" x 8' 10" (5.07m x 2.69m)

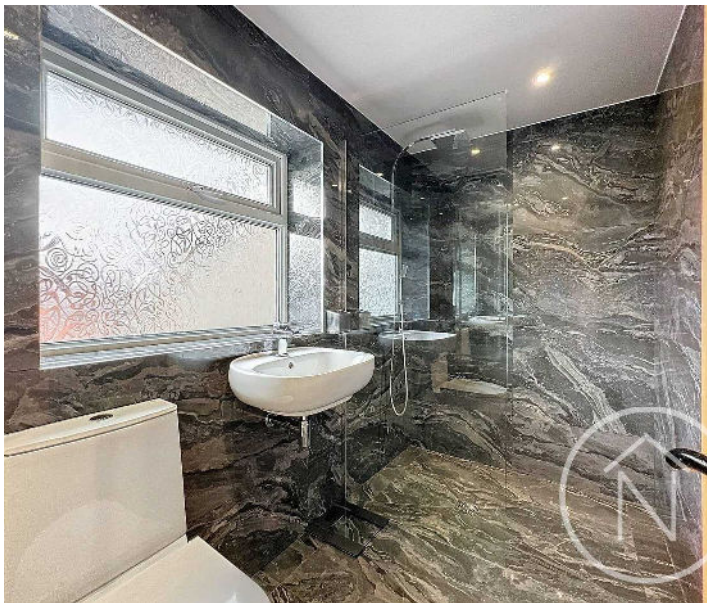


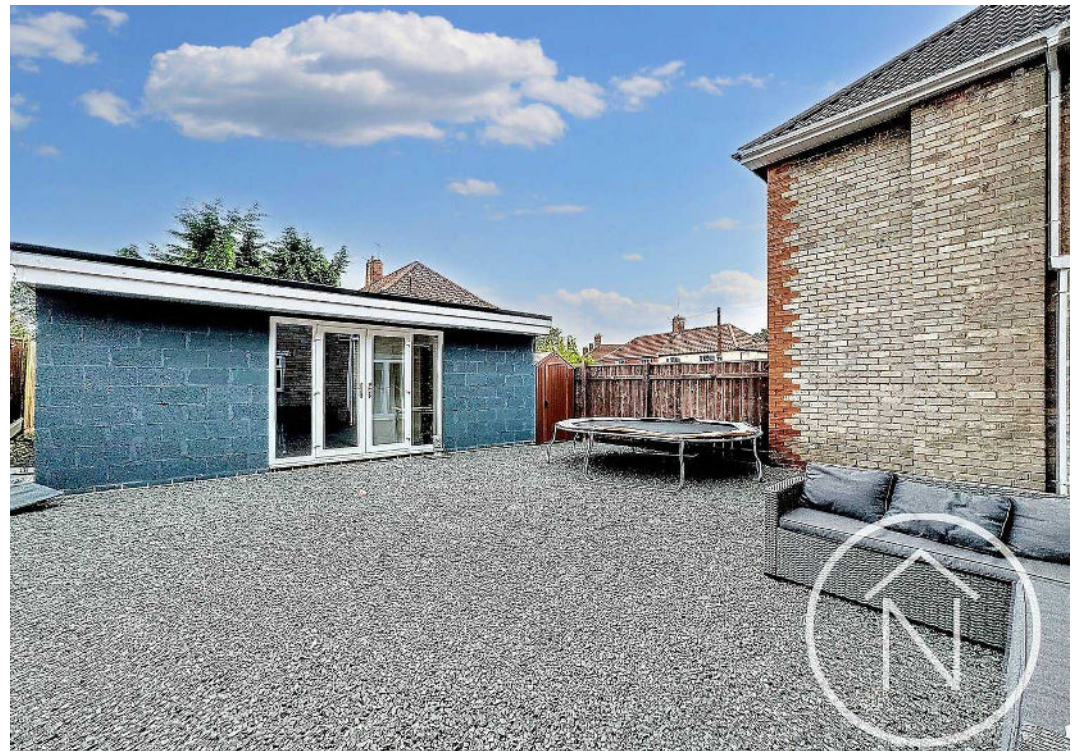
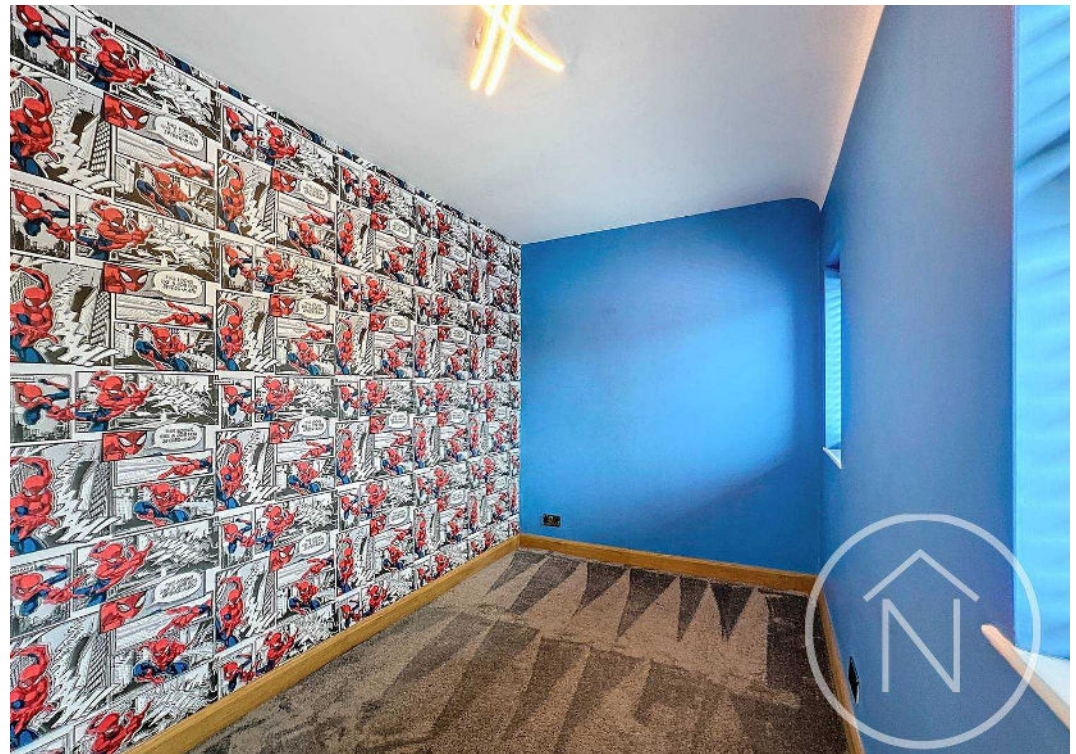
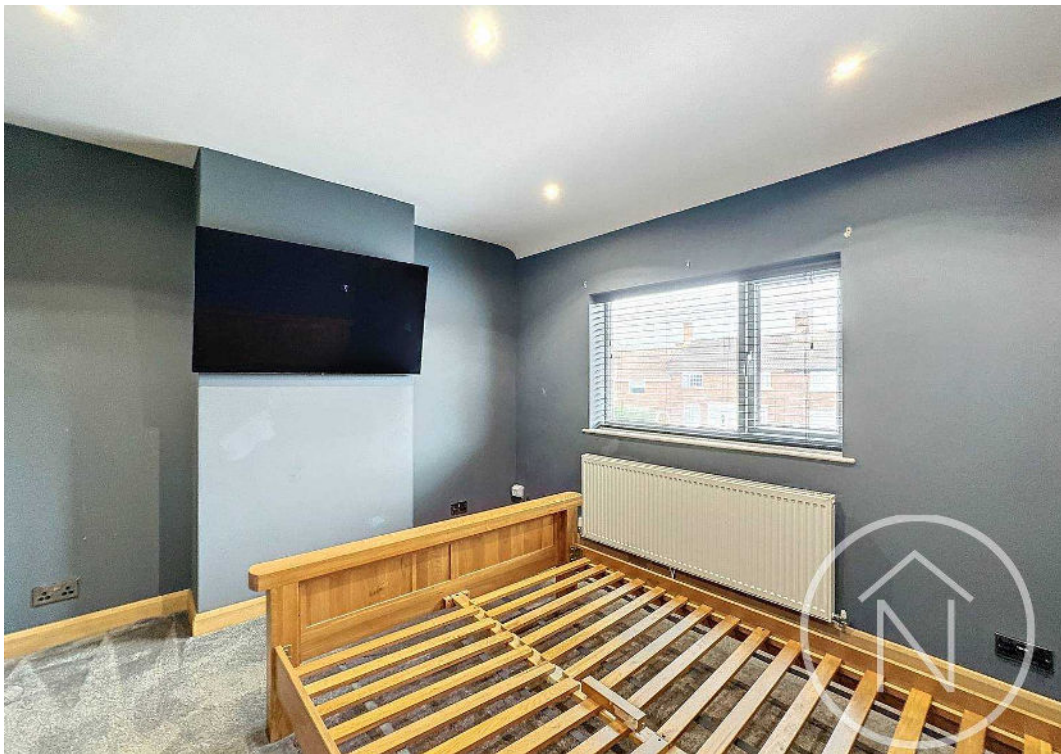


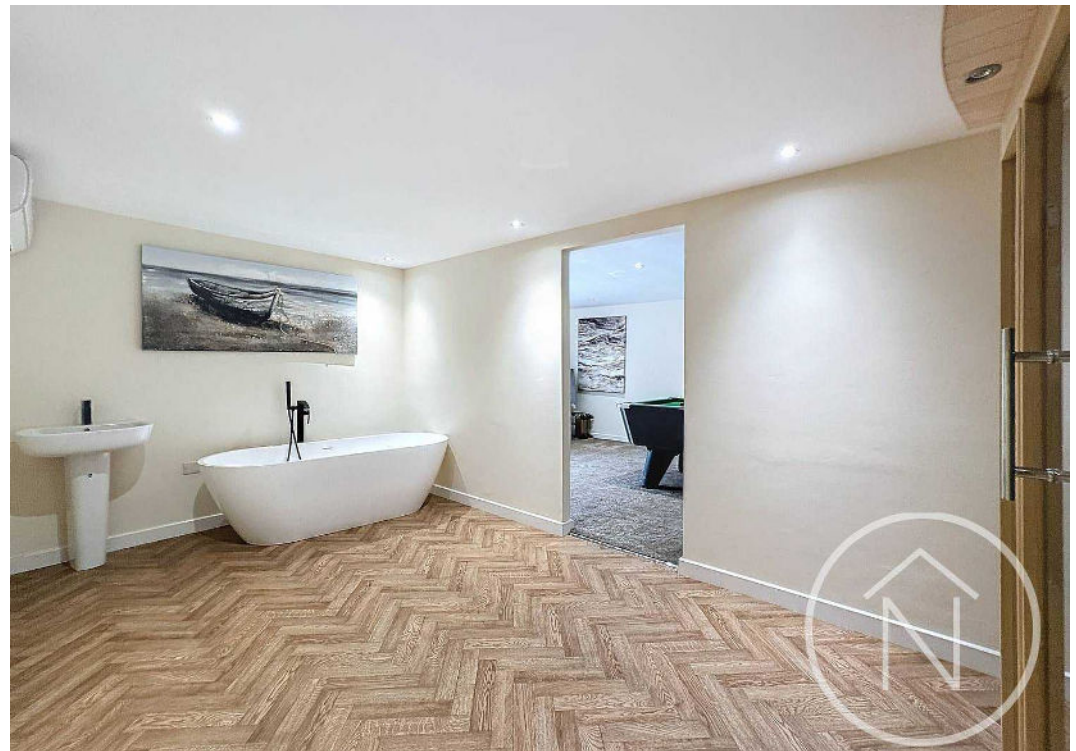
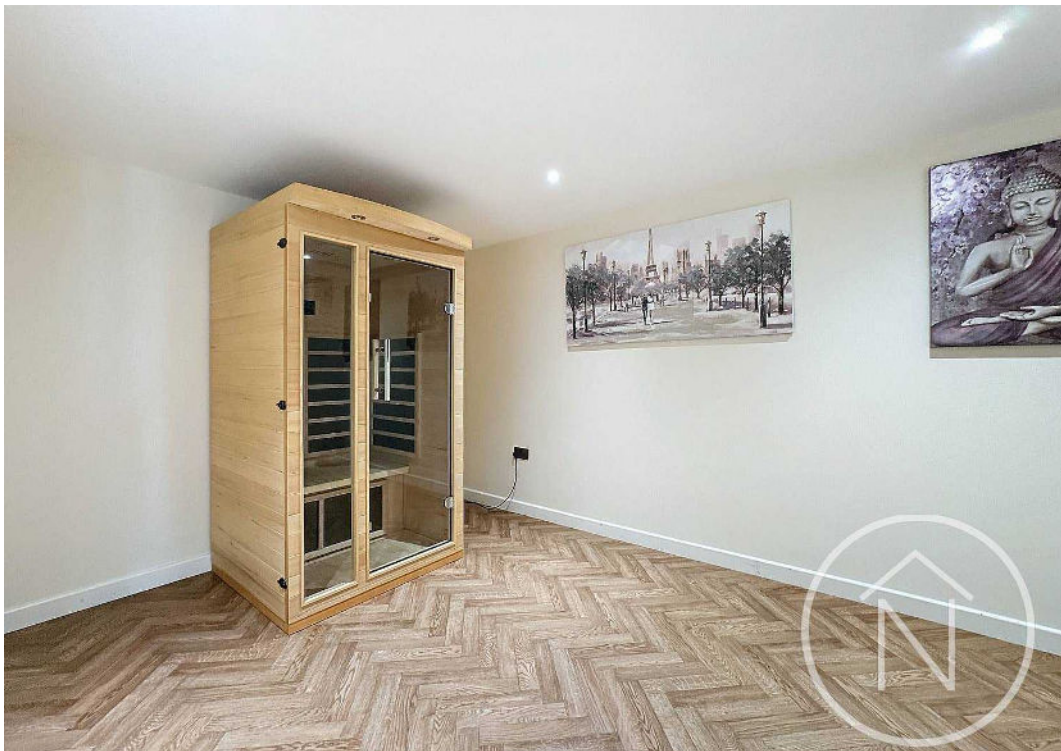
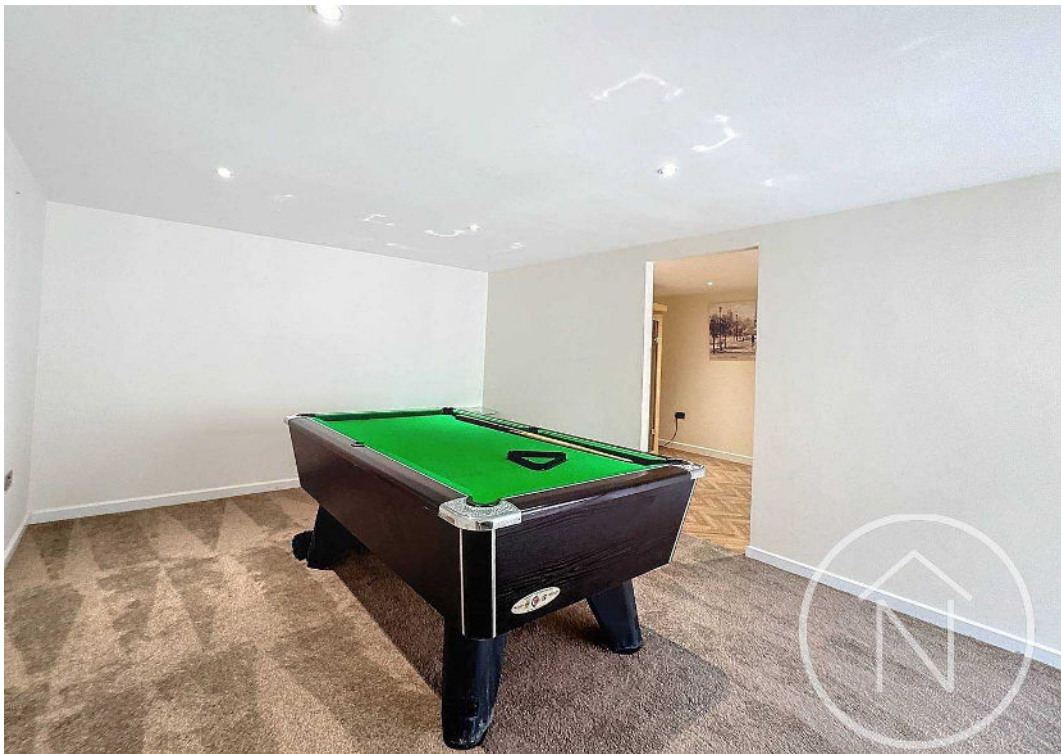
GARDEN

DRIVEWAY

3 Parking Spaces

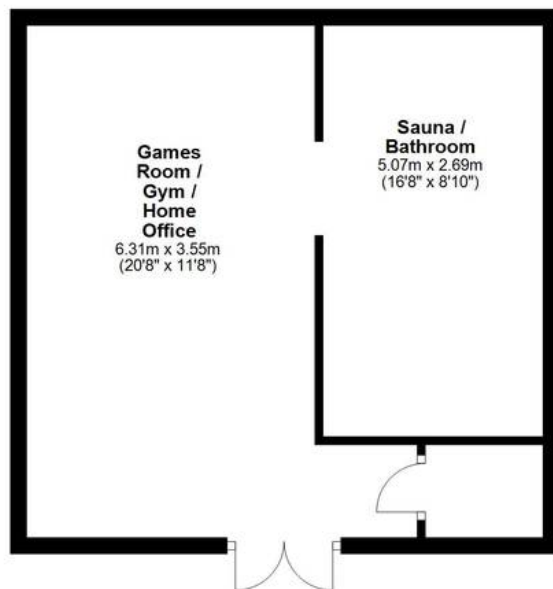






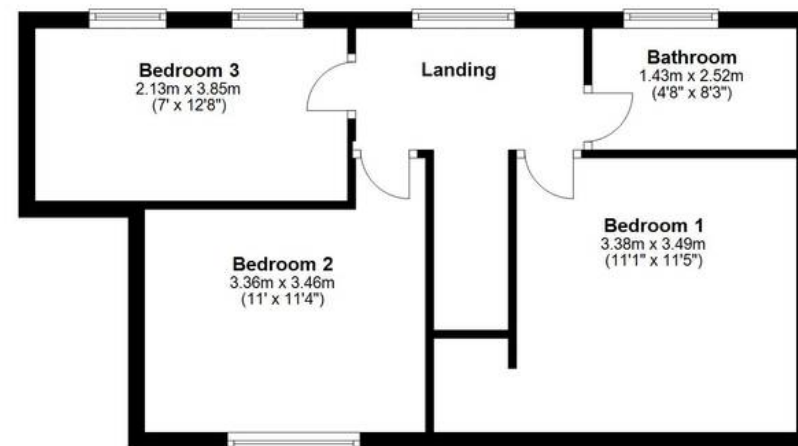
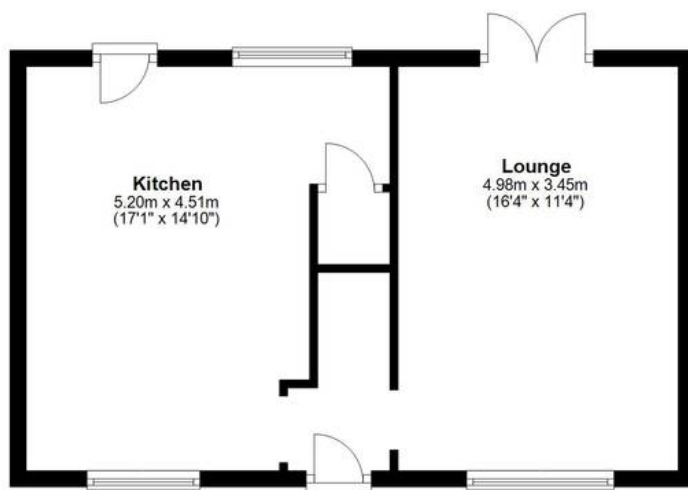
Ground Floor

Approx. 80.6 sq. metres (867.8 sq. feet)



First Floor

Approx. 42.9 sq. metres (461.4 sq. feet)



Total area: approx. 123.5 sq. metres (1329.2 sq. feet)

floor plan(s) by Northgate² for illustration purpose only all measurements are approximate.
Plan produced using PlanUp.



Northgate - Teesside

8 Town Square, Billingham - TS23 2LY

01642 813222

billingham@northgates.net

www.northgates.co.uk/

While we have made efforts to ensure the accuracy of the information provided in our sales particulars, please note that we have gathered this information from the seller. Should you require further details or clarification on any specific matter, we kindly request you to contact our office where we are ready to gather evidence or conduct further investigations on your behalf. It is important to note that Northgate has not tested any of the services, appliances, or equipment within this property. Therefore, we strongly recommend that prospective buyers arrange for their independent surveys or service reports before finalising the purchase of the property.