



Foxton Close, Newton Aycliffe

Newton Aycliffe



In Excess of £160,000





## 27 Foxton Close

Newton Aycliffe, Newton Aycliffe

Nestled in the sought-after Woodham area of Newton Aycliffe, this delightful two-bedroom detached bungalow is now available for sale with no onward chain. Boasting a charming blend of comfort and convenience, the property welcomes you with a well-appointed kitchen featuring a range of base and eye-level units, an integrated electric oven, and a gas hob. The kitchen seamlessly flows into the dining room, which is open plan to the living room, creating a perfect space for entertaining. The living room is enhanced by a feature fireplace and surround.

The property offers two bedrooms, both equipped with built-in wardrobes. The shower room is complete with a vanity wash hand unit and WC. Moving outside, the property impresses with a block-paved front parking area and side access leading to the rear garden. The rear garden features a delightful patio area and a well-maintained lawn adorned with a variety of shrubs and trees, creating a peaceful outdoor retreat. Additionally, a rear gate provides convenient access to the driveway, offering additional parking options for residents and guests.

With its desirable location, thoughtful design, and well-maintained outdoor space, this property presents a unique opportunity to own a charming bungalow in Newton Aycliffe's popular Woodham area. Don't miss the chance to make this delightful residence your own and experience the comfort and convenience it has to offer.

Council Tax band: B

Tenure: Freehold





**Living Room:**

15'8" x 10'7" (4.78m x 3.24m)

**Kitchen:**

8'10" x 8'8" (2.70m x 2.65m)

**Dining Room:**

6'3" x 8'11" (1.93m x 2.73m)

**Bedroom One:**

13'5" x 8'10" (4.10m x 2.70m)

**Bedroom Two:**

6'11" x 8'8" (2.13m x 2.64m)

**Bathroom:**

6'2" x 5'6" (1.90m x 1.68m)







**GARDEN**

**DRIVEWAY**

2 Parking Spaces

Front block paved area.

**DRIVEWAY**

1 Parking Space

Rear driveway.







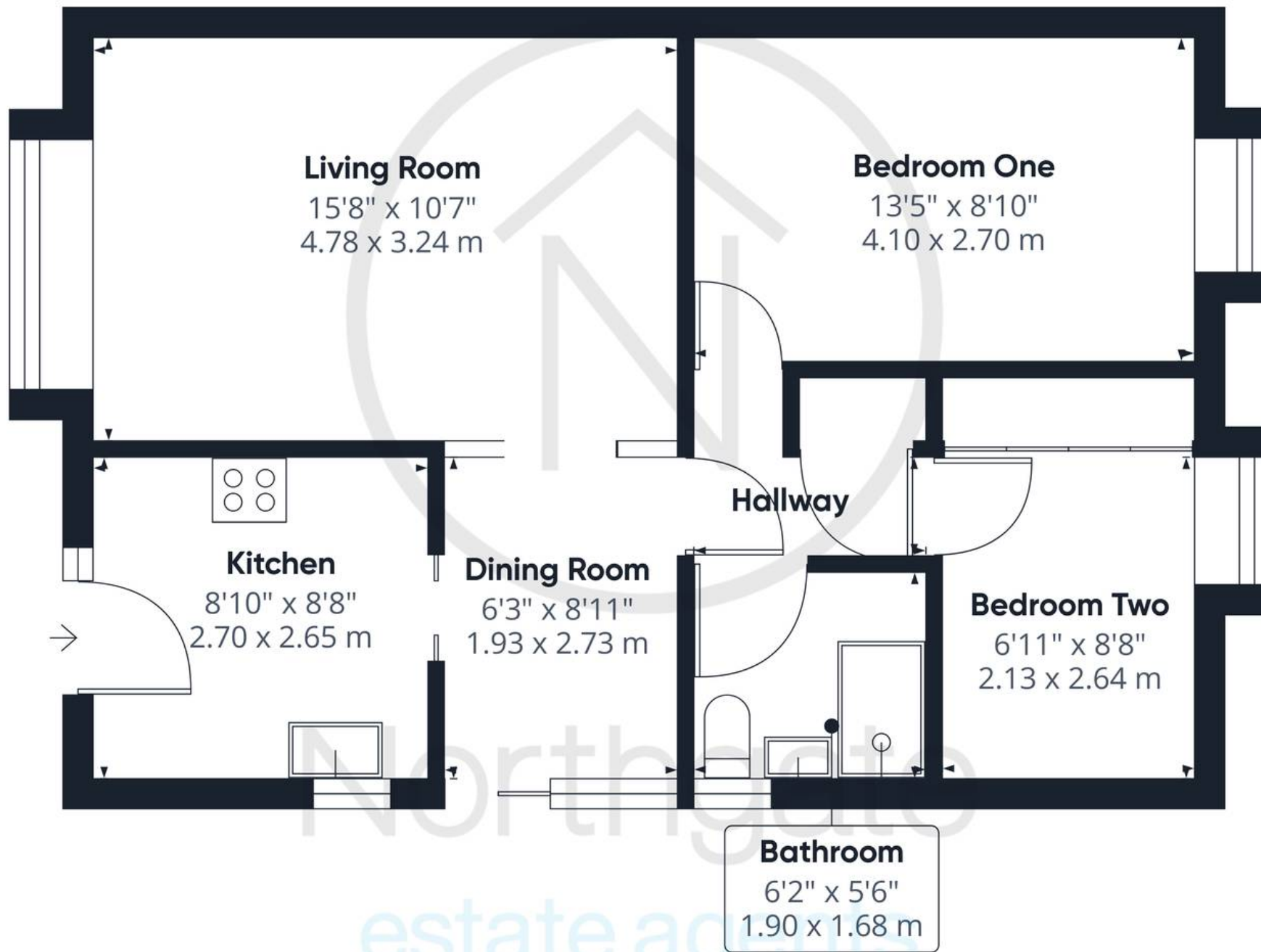








Northgate  
estate agents



Approximate total area<sup>(1)</sup>

562.2 ft<sup>2</sup>  
52.23 m<sup>2</sup>

(1) Excluding balconies and terraces

While every attempt has been made to ensure accuracy, all measurements are approximate, not to scale. This floor plan is for illustrative purposes only.

Calculations are based on RICS IPMS 3C standard.

GIRAFFE360





## Northgate - County Durham

Northgate Estate Agents, Suite 3 - DL5 4DH

01325 728333 • [info@northgates.net](mailto:info@northgates.net) • [www.northgates.co.uk/](http://www.northgates.co.uk/)



These particulars do not constitute, nor constitute part of, an offer or contract. No warranties are provided. Verify details through inspection. Northgate estate agents, nor any person in their employment has any authority to make or give any representation or warranty whatever in the relation to this property. All measurements are approximate.