



Mitchell Street, Hartlepool



Guide Price £100,000



4 Mitchell Street

Hartlepool

This four-bedroom mid-terrace property, available with no onward chain, is an ideal choice for first-time buyers or investors. The home features gas central heating and UPVC double glazing, providing both comfort and energy efficiency. With its spacious layout and excellent location, this property offers great potential for those looking to step onto the property ladder or expand their investment portfolio.

In accommodation comprises of:

Entrance Hall

Lounge

Kitchen

Family Bathroom

En-Suite

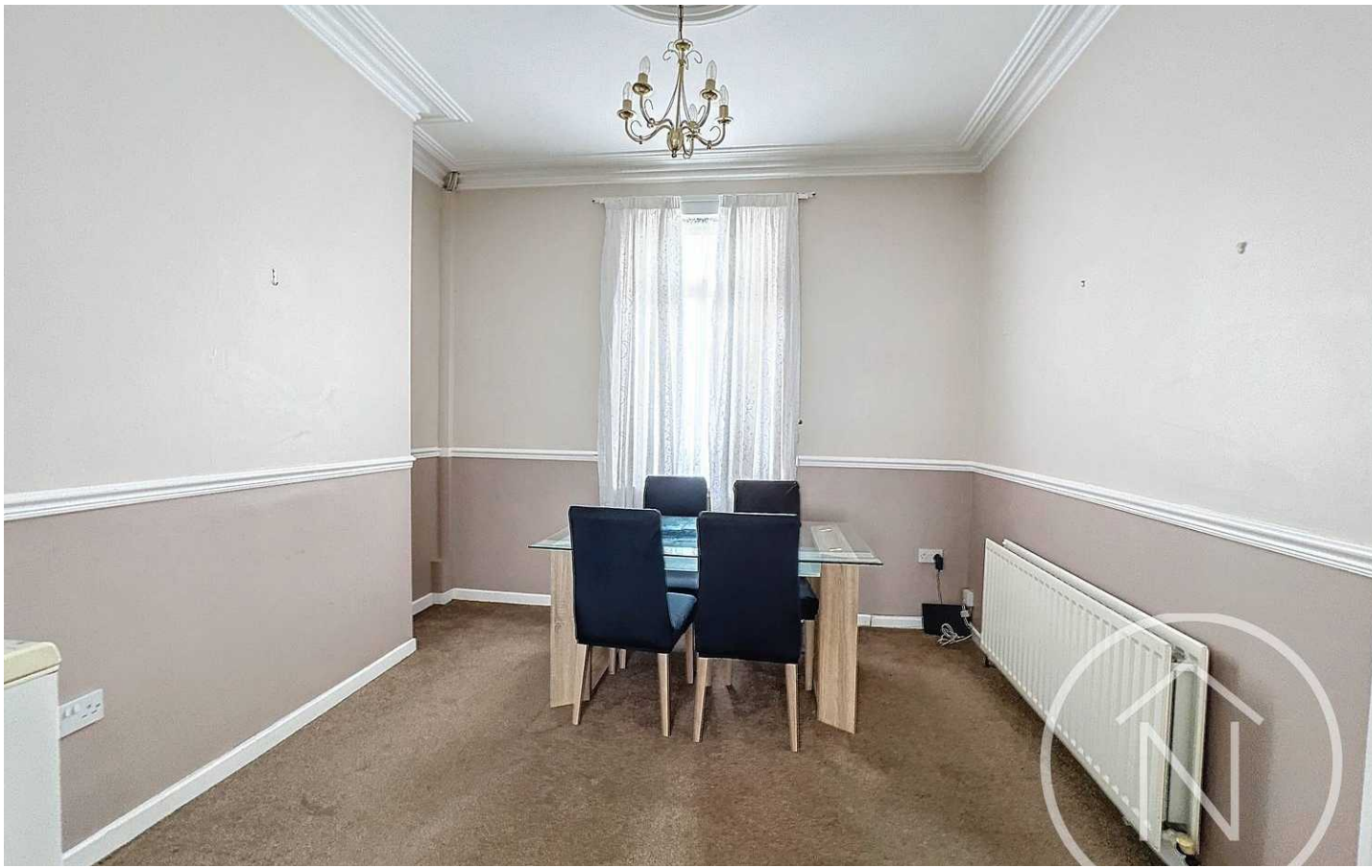
Four Bedrooms

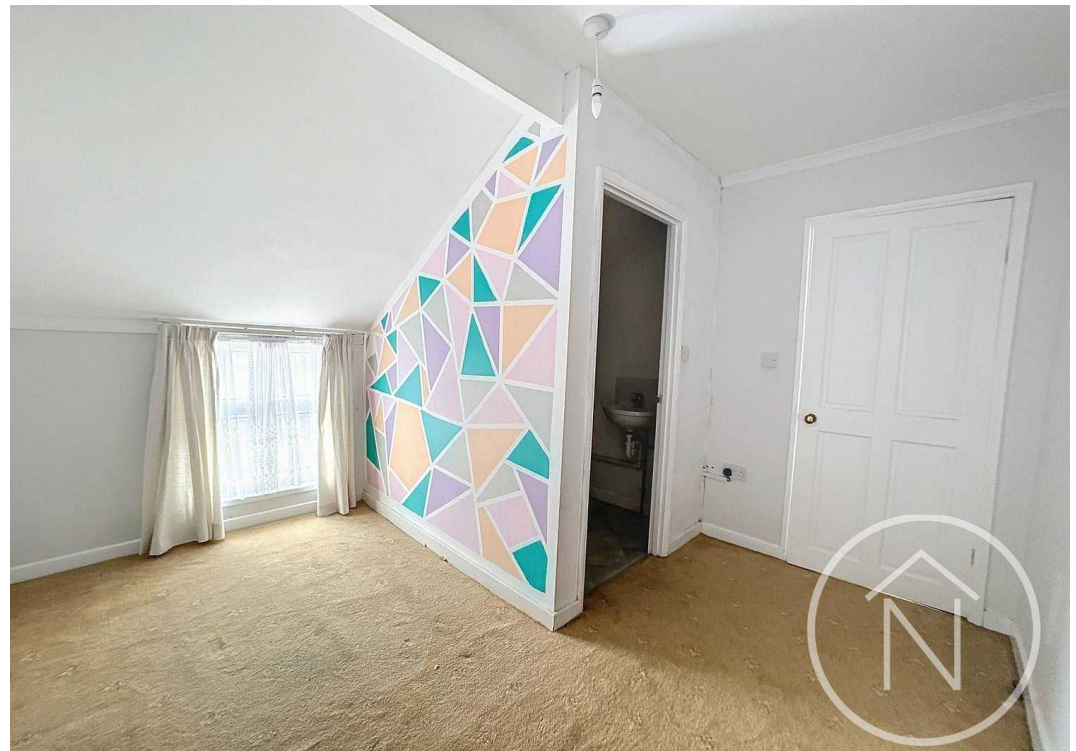
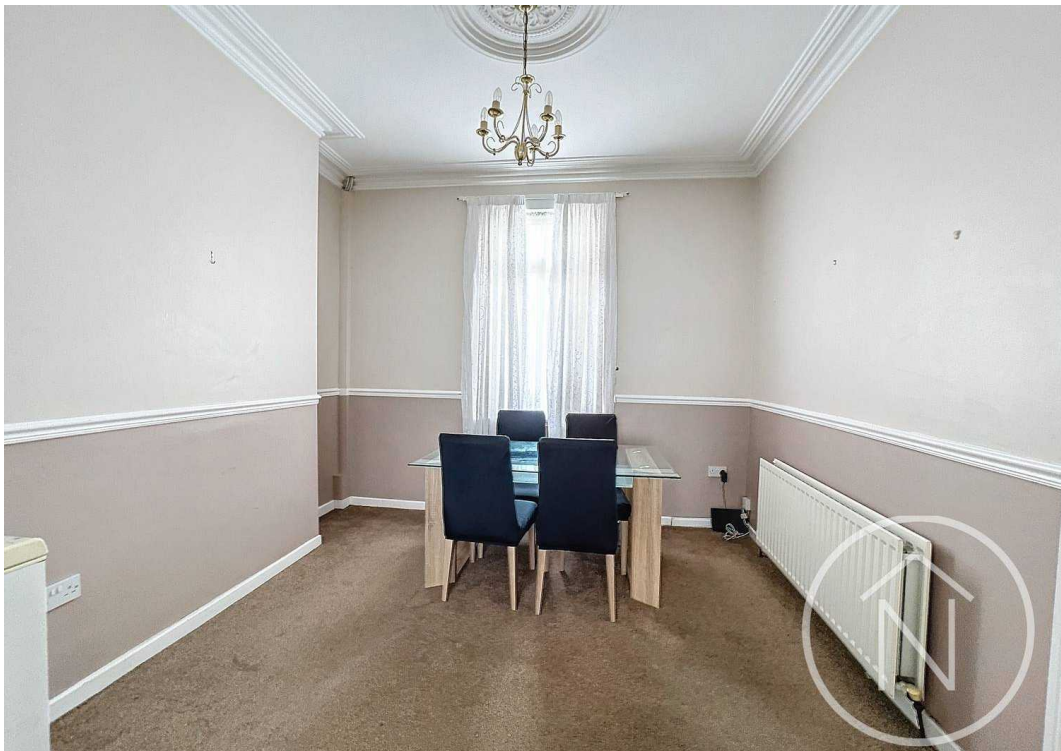
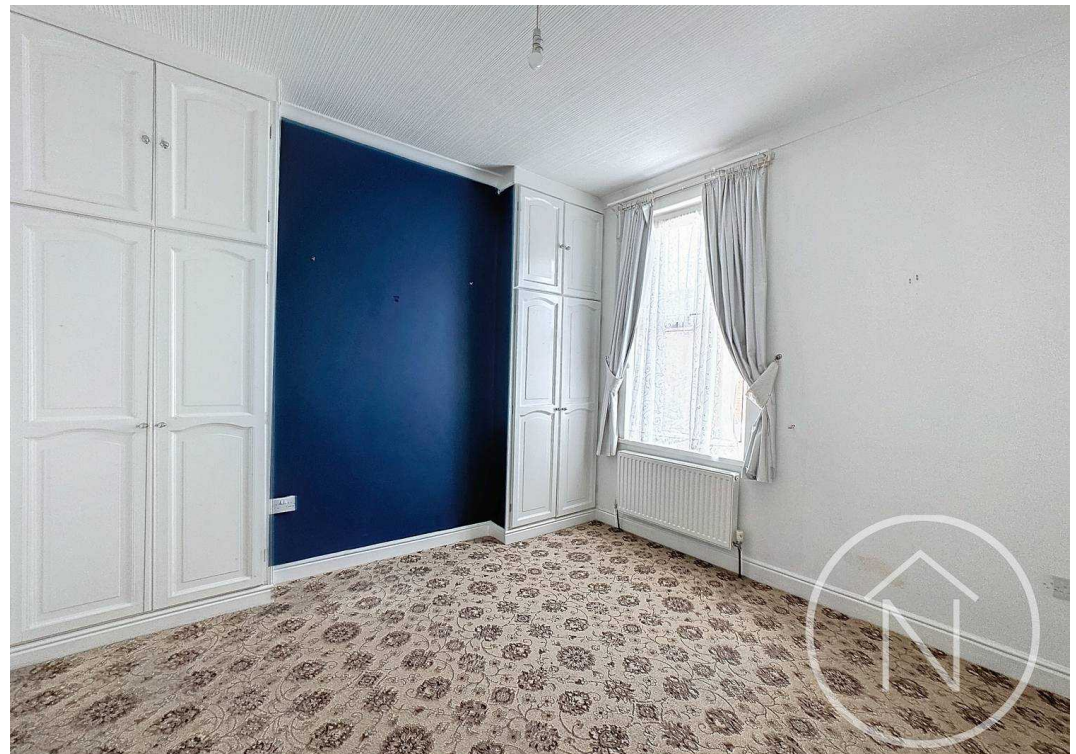
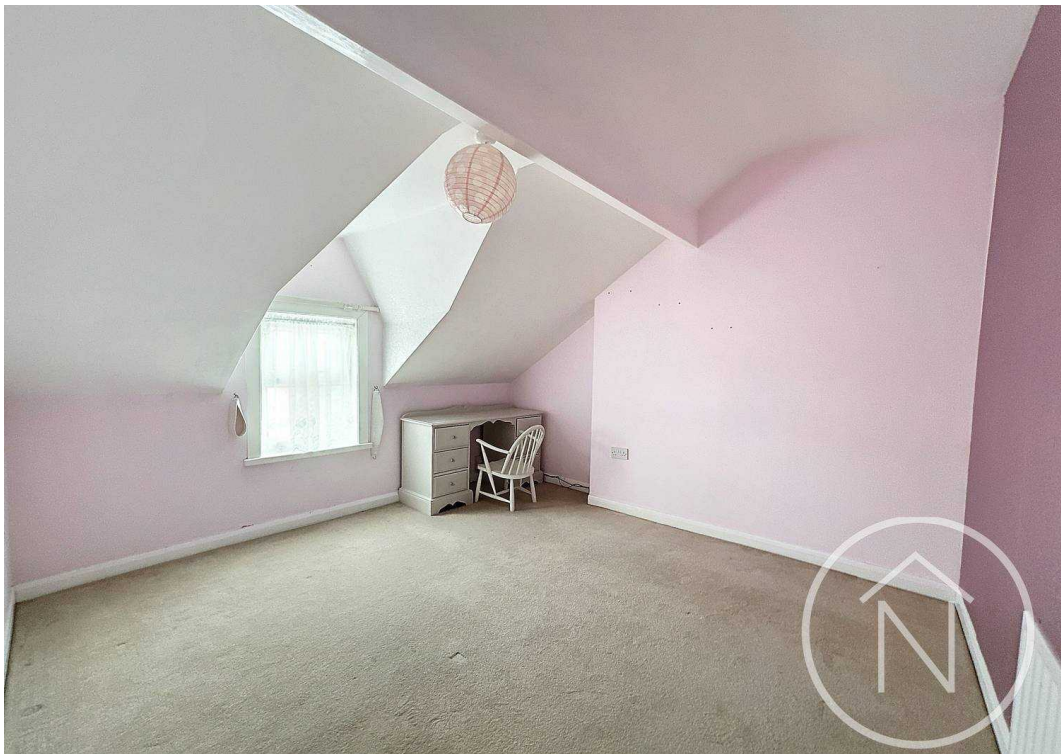
Council Tax band: A

Tenure: Freehold

EPC Energy Efficiency Rating: D

EPC Environmental Impact Rating:







Northgate - Teesside

8 Town Square, Billingham - TS23 2LY

01642 813222

billingham@northgates.net

www.northgates.co.uk/

While we have made efforts to ensure the accuracy of the information provided in our sales particulars, please note that we have gathered this information from the seller. Should you require further details or clarification on any specific matter, we kindly request you to contact our office where we are ready to gather evidence or conduct further investigations on your behalf. It is important to note that Northgate has not tested any of the services, appliances, or equipment within this property. Therefore, we strongly recommend that prospective buyers arrange for their independent surveys or service reports before finalising the purchase of the property.