



Sheraton Road, Newton Aycliffe

Newton Aycliffe



In Excess of £150,000





## 15 Sheraton Road

Newton Aycliffe, Newton Aycliffe

Introducing this stunning 3-bedroom semi-detached family home, perfect for those seeking contemporary living. As you step inside, you are greeted by an inviting entrance hall leading to a convenient W.C. for guests. The spacious lounge offers a comfortable retreat for relaxation, while the highlight of the property is the modern newly fitted kitchen and dining room, ideal for hosting family meals and gatherings. Moving upstairs, you will find three well-appointed bedrooms and a family bathroom.

Externally, this property boasts a large front lawned garden, providing a charming kerb appeal along with a driveway capable of accommodating several vehicles leading to a single garage, perfect for secure off-street parking. The private enclosed low maintenance south-west facing rear garden offers a tranquil outdoor space, perfect for al fresco dining and entertaining during the warmer months. With its combination of modern interiors, spacious rooms, and well-maintained outdoor areas, this property presents a wonderful opportunity to own a stylish family home in a desirable location.

Contact us today to arrange a viewing and experience the charm and sophistication of this exceptional property firsthand.

Council Tax band: B

Tenure: Freehold

- Three Bedroom Semi-Detached Family Home
- Entrance Hall, W.C. , Lounge,
- Modern Newly Fitted Kitchen / Dining Room
- First Floor Family Bathroom
- Large Front Lawned Garden, and Driveway for several





**Living Room:**

15'0" x 12'9" (4.48 m x 3.91 m)

**Kitchen / Dining Room:**

9'0" x 16'2" (2.79 m x 4.93 m)

**WC:**

7'0" x 2'9" (2.03 m x 0.86 m)

**Bedroom One:**

15'0" x 9'1" (4.54 m x 2.77 m)

**Bedroom Two:**

10'0" x 10'1" (2.93 m x 3.07 m)

**Bedroom Three:**

10'0" x 7'0" (3.01 m x 2.14 m)

**Bathroom:**

7'0" x 6'0" (2.03 m x 1.84 m)

**Garage:**

16'0" x 8'3" (4.93 m x 2.53 m)







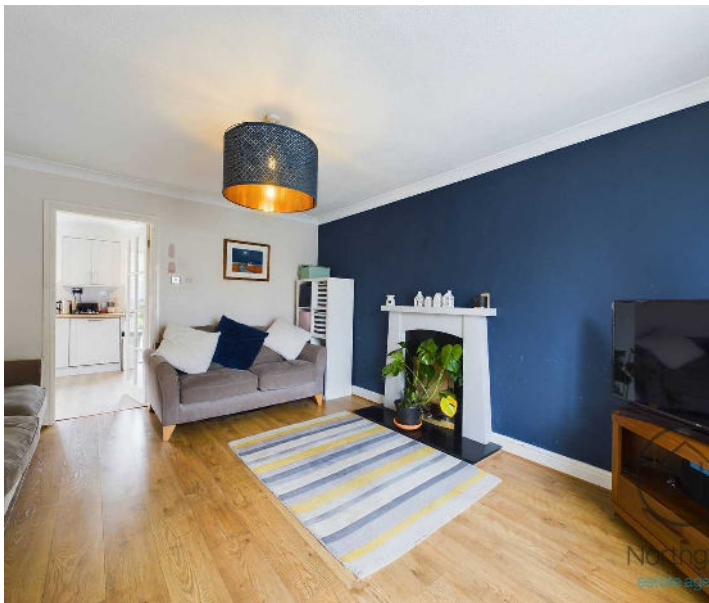
**GARDEN**

**GARAGE**

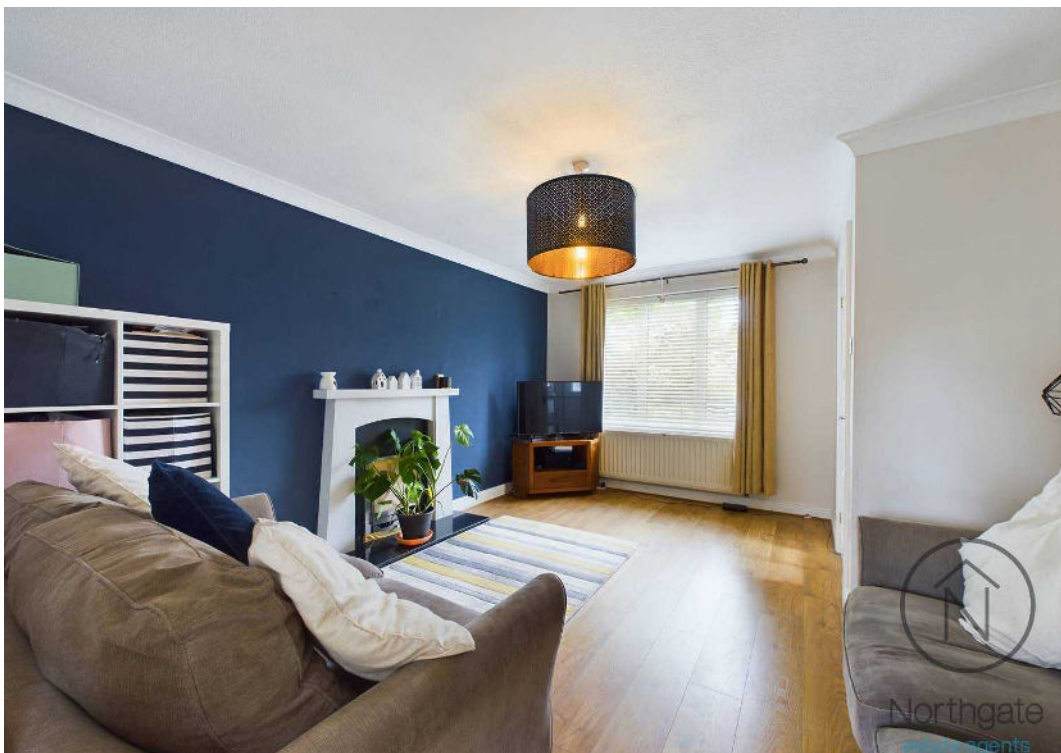
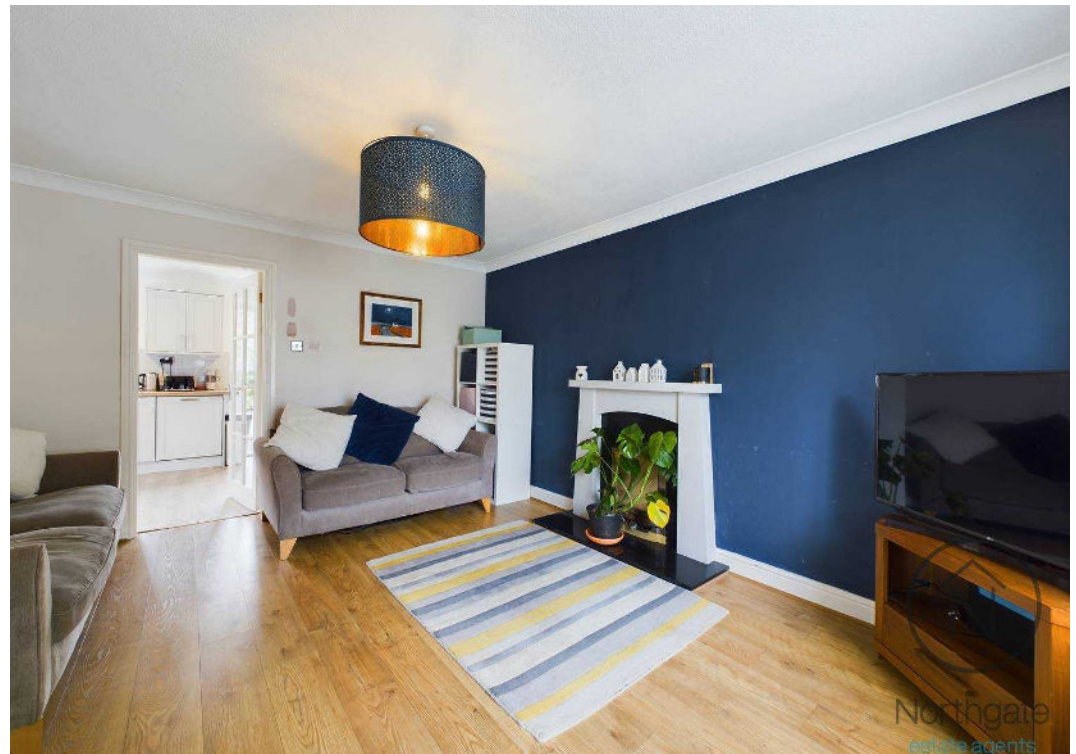
Single Garage

**DRIVEWAY**

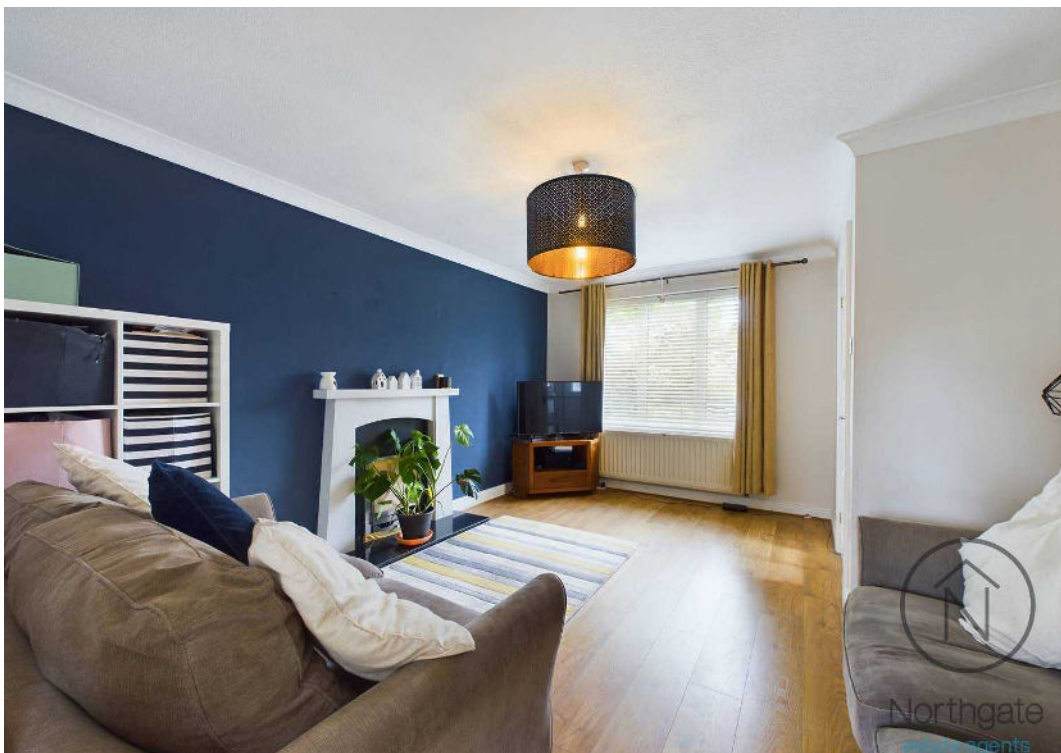
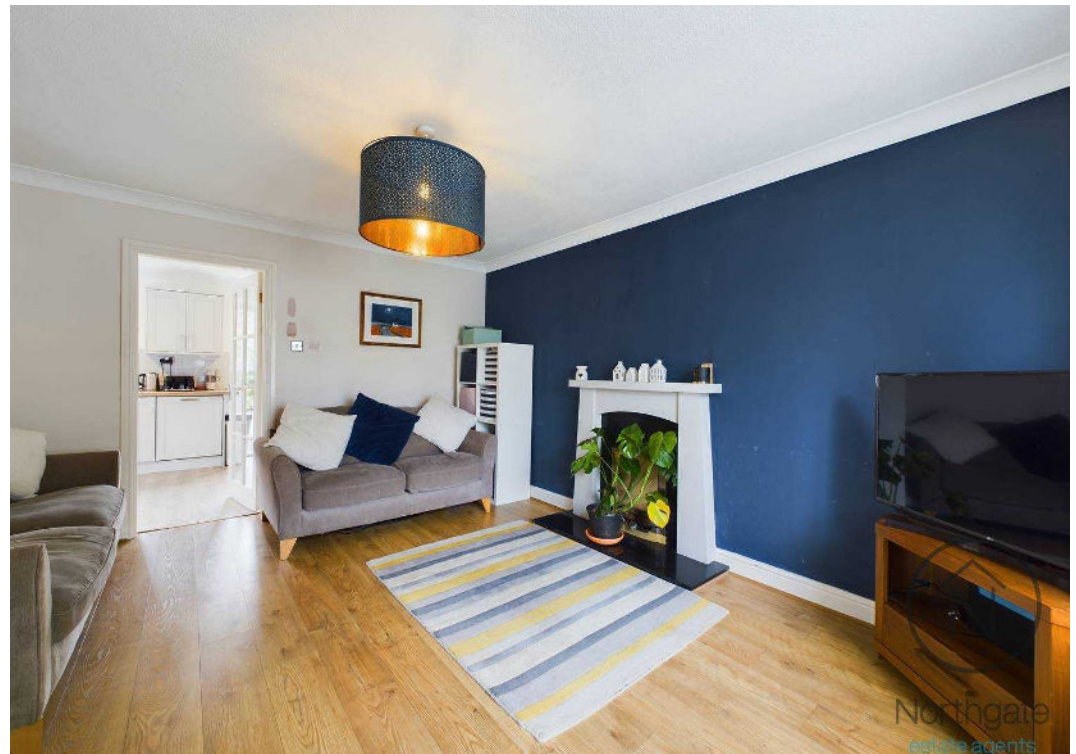
4 Parking Spaces













**WC**  
7'0" x 2'9"  
2.03 x 0.86 m



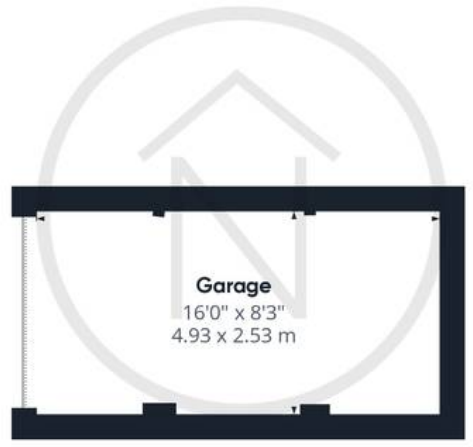
Northgate  
estate agents

Ground Floor Building 1



Northgate  
estate agents

Floor 1 Building 1



Northgate  
estate agents

Ground Floor Building 2



Northgate  
estate agents

Approximate total area<sup>(1)</sup>  
914.93 ft<sup>2</sup>  
85 m<sup>2</sup>

(1) Excluding balconies and terraces

While every attempt has been made to ensure accuracy, all measurements are approximate, not to scale. This floor plan is for illustrative purposes only.

GIRAFFE360





## Northgate - County Durham

Northgate Estate Agents, Suite 3 - DL5 4DH

01325 728333 • [info@northgates.net](mailto:info@northgates.net) • [www.northgates.co.uk/](http://www.northgates.co.uk/)



These particulars do not constitute, nor constitute part of, an offer or contract. No warranties are provided. Verify details through inspection. Northgate estate agents, nor any person in their employment has any authority to make or give any representation or warranty whatever in the relation to this property. All measurements are approximate.