



Elmfield Place, Newton Aycliffe

Newton Aycliffe



In Excess of £90,000



9 Elmfield Place

Newton Aycliffe, Newton Aycliffe

Elmfield Place is a delightful three-bedroom terrace property, ideally positioned for easy access to the train station, making it perfect for commuters. The property features a spacious entrance hall leading to an open-plan dining and living area, ideal for entertaining guests. The modern fitted kitchen is equipped with appliances. Additionally, there is a convenient ground floor shower room / W.C..

First Floor Landing leading to three generously sized bedrooms, providing ample space for a growing family, and a modern family bathroom.

Externally, the rear of the property features a unique yard with a concrete block effect driveway and a patio area. The property also includes a single garage with an up-and-over door and additional side door access. The front of the property has a small forecourt area with patio, Astroturf lawn and a boundary timber fence, adding to its curb appeal.

The property is for sale with no onward chain, ensuring a smooth and hassle-free purchase process. Don't miss the opportunity to own this charming terrace property in Elmfield Place. Contact us today to arrange a viewing!

Council Tax band: A

Tenure: Freehold

- Three Bedroom Mid Terrace
- Lounge, Dining, Kitchen
- Ground Floor Shower Room, First Floor Bathroom
- Three Good Sized Bedrooms
- Drive, Garage, & Forecourt Garden
- Energy efficiency rating: TBC



Hallway:

12'6" x 5'0" (3.83 x 1.53 m)

Living Room:

13'2" x 8'0" (4.03 x 2.45 m)

Dining Room:

9'6" x 10'7" (2.92 x 3.24 m)

Kitchen:

8'10" x 9'11" (2.71 x 3.03 m)

Shower Room:

5'7" x 5'0" (1.71 x 1.53 m)

First Floor

Bedroom One:

9'8" x 8'10" (2.95 x 2.71 m)

Bedroom Two:

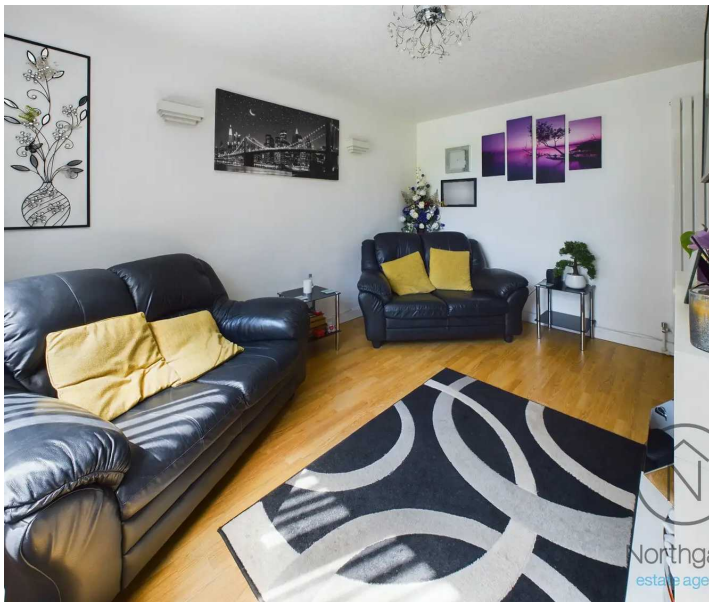
13'2" x 8'0" (4.03 x 2.45 m)

Bedroom Three:

8'10" x 8'3" (2.70 x 2.52 m)

Garage:

17'2" x 8'7" (5.26 x 2.63 m)





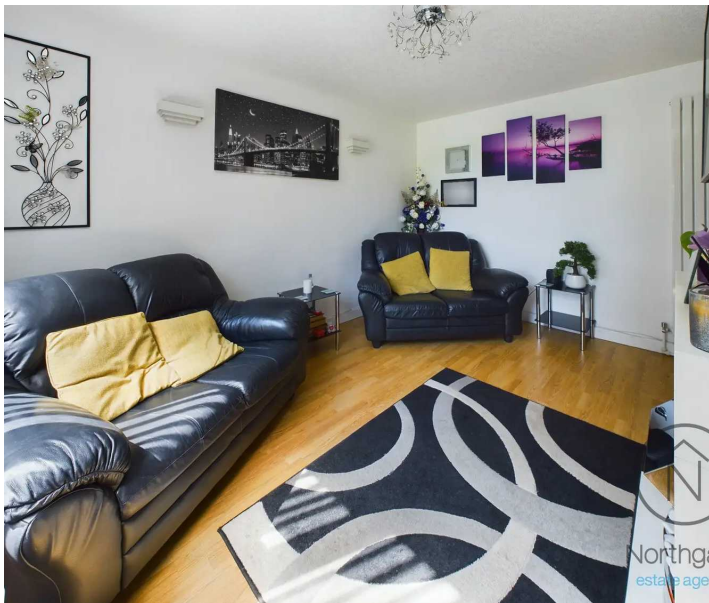
GARDEN

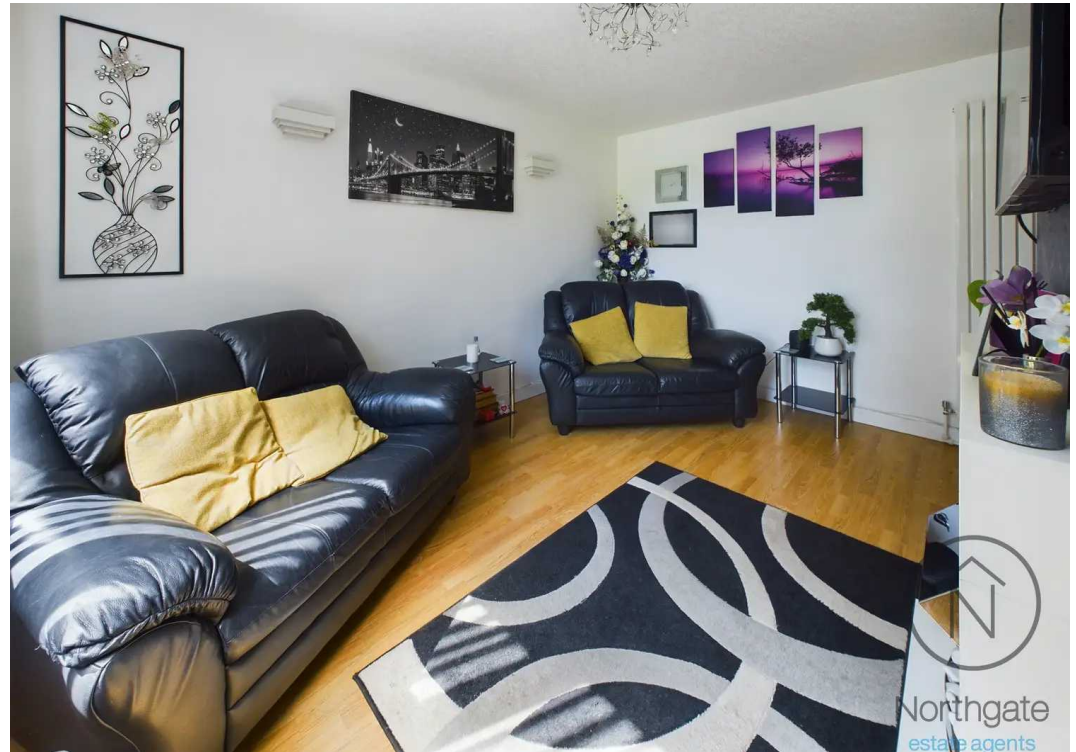
GARAGE

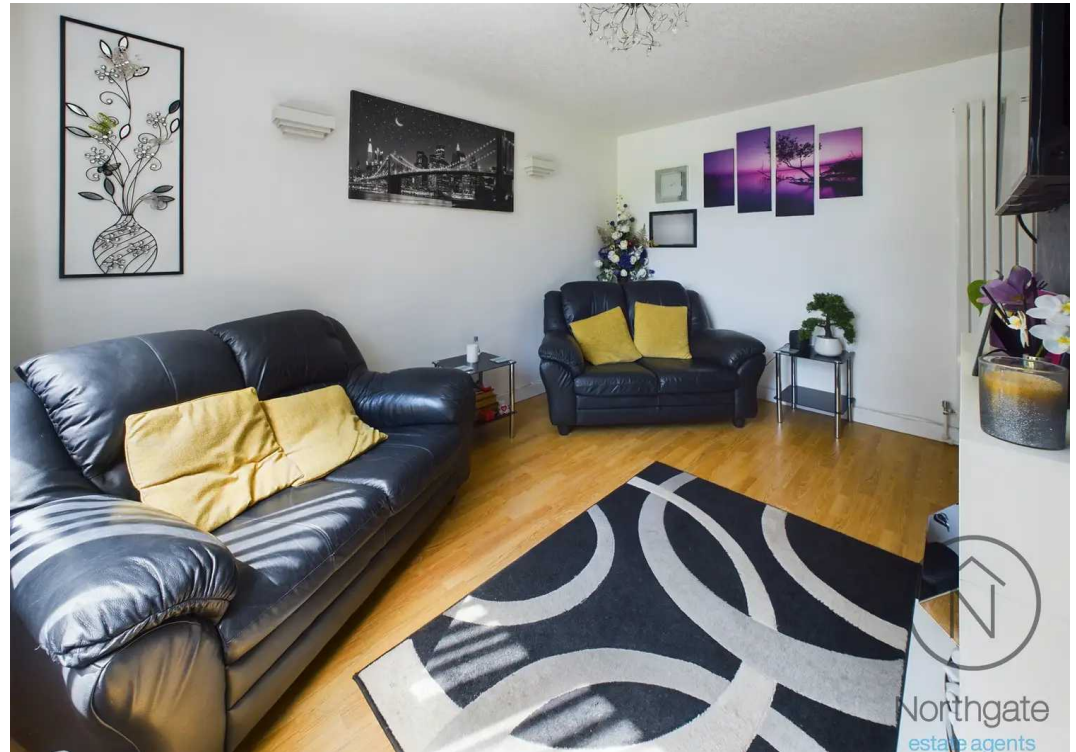
Single Garage

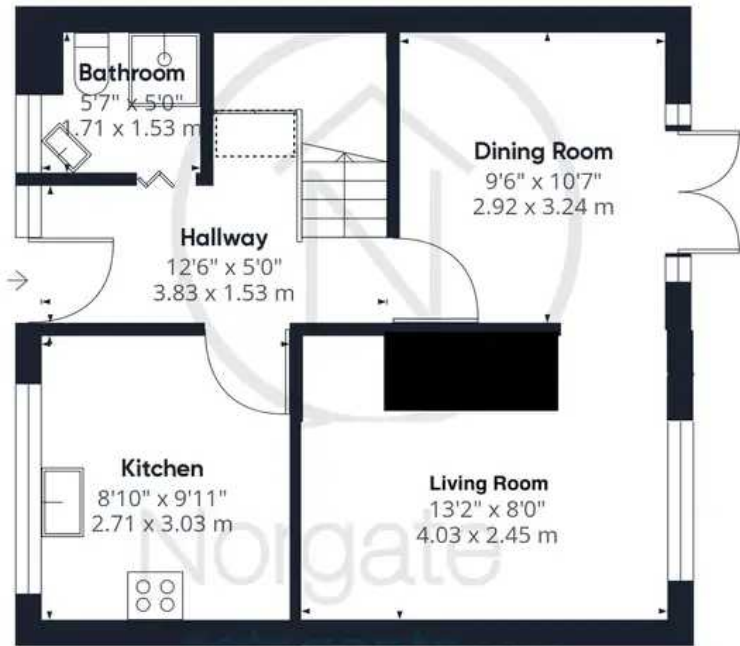
DRIVEWAY

1 Parking Space

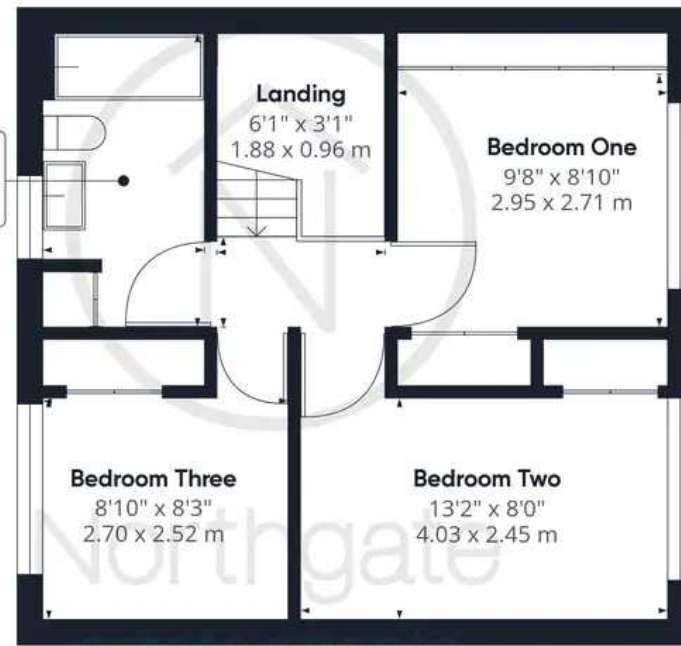




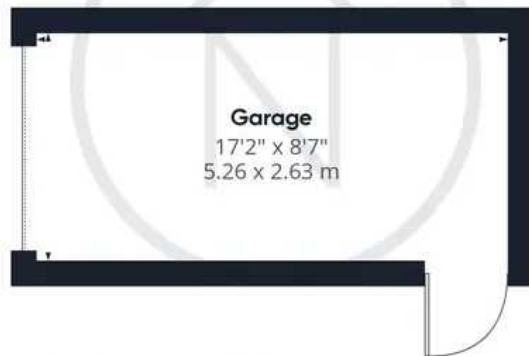




Ground Floor Building 1



Floor 1 Building 1



Ground Floor Building 2



Northgate
estate agents

Approximate total area⁽¹⁾

782.34 ft²

72.68 m²

Reduced headroom

4.93 ft²

0.46 m²

(1) Excluding balconies and terraces

Reduced headroom
(below 1.5m/4.92ft)

While every attempt has been made to ensure accuracy, all measurements are approximate, not to scale. This floor plan is for illustrative purposes only.

GIRAFFE360



Northgate - County Durham

Northgate Estate Agents, Suite 3 - DL5 4DH

01325 728333 • info@northgates.net • www.northgates.co.uk/



These particulars do not constitute, nor constitute part of, an offer or contract. No warranties are provided. Verify details through inspection. Northgate estate agents, nor any person in their employment has any authority to make or give any representation or warranty whatever in the relation to this property. All measurements are approximate.