



Devon Crescent

Billingham



Offers Invited Between £110,000 - £120,000



Devon Crescent

Billingham

This charming property is a perfect choice for first-time buyers looking for a cosy abode. With three bedrooms, a driveway at the front, and a delightful west-facing garden at the rear, this mid-terrace offers a balance of comfort and convenience. The accommodation includes a welcoming entrance hall, a lounge with a bay window, a functional kitchen, a handy utility room, a ground floor WC, a well-appointed bathroom, and three inviting bedrooms. The gas central heating and UPVC double glazing add to the modern appeal of this home, ensuring warmth and energy-efficiency all year round.

Outside, the property boasts a lovely garden that provides a peaceful retreat for relaxation or entertaining guests. Situated in a prime location close to local shops, schools, and bus routes, this residence offers the best of both worlds - a tranquil outdoor space to enjoy, as well as easy access to every-day amenities. Whether you're looking to unwind after a long day or host a weekend barbeque, this property's outdoor area is sure to cater to your lifestyle needs.

Council Tax band: A

Tenure: Freehold

While we have made efforts to ensure the accuracy of the information provided in our sales particulars, please note that we have gathered this information from the seller. Should you require further details or clarification on any specific matter, we kindly request you to contact our office where we are ready to gather evidence or conduct further investigations on your behalf.

It is important to note that Northgate has not tested any of the services, appliances, or equipment within this property. Therefore, we strongly recommend that prospective buyers arrange for their independent surveys or service reports before finalising the purchase of the property.



Entrance Hall

Lounge

15' 2" x 11' 8" (4.62m x 3.55m)

Kitchen

14' 4" x 22' 3" (4.38m x 6.78m)

Utility

4' 11" x 6' 1" (1.51m x 1.85m)

Ground Floor Wc

3' 4" x 6' 1" (1.02m x 1.85m)

Landing

7' 1" x 9' 5" (2.15m x 2.86m)

Bathroom

7' 2" x 5' 7" (2.19m x 1.69m)

Bedroom One

10' 11" x 11' 9" (3.33m x 3.59m)

Bedroom Two

10' 10" x 12' 1" (3.31m x 3.68m)

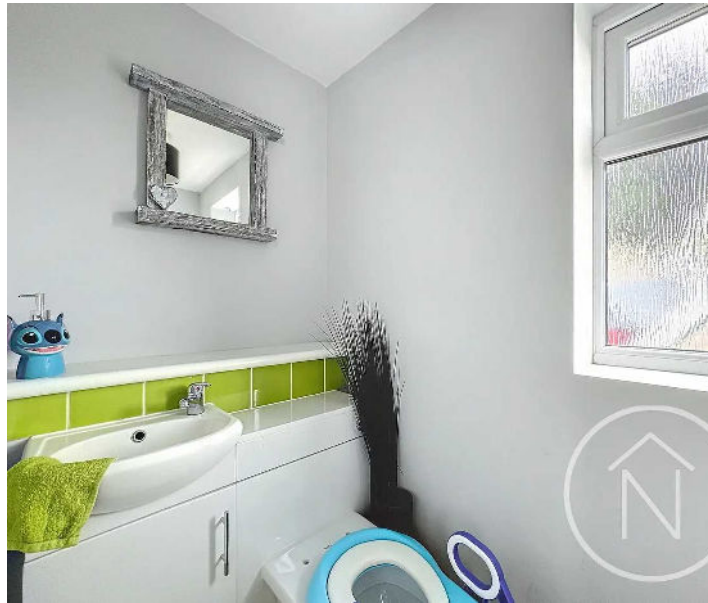
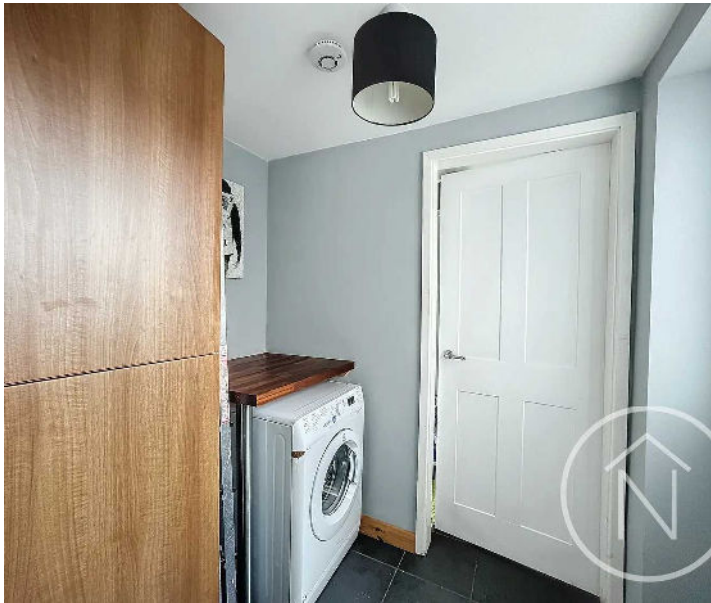
Bedroom Three

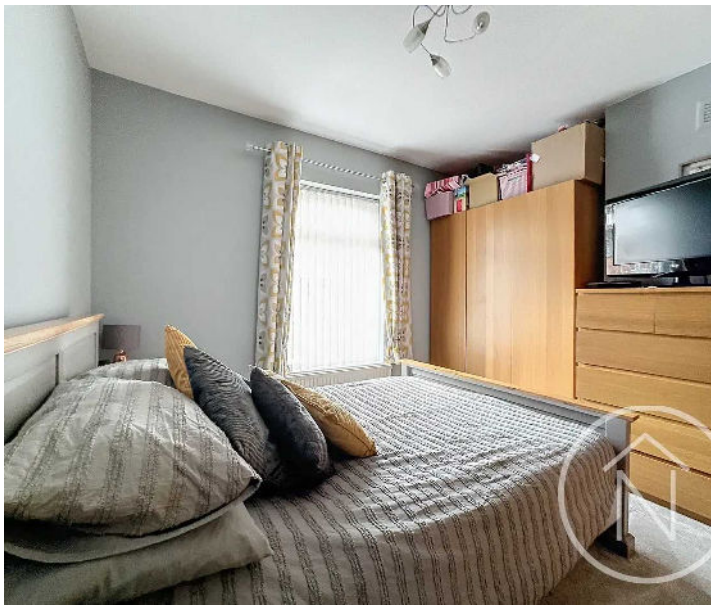
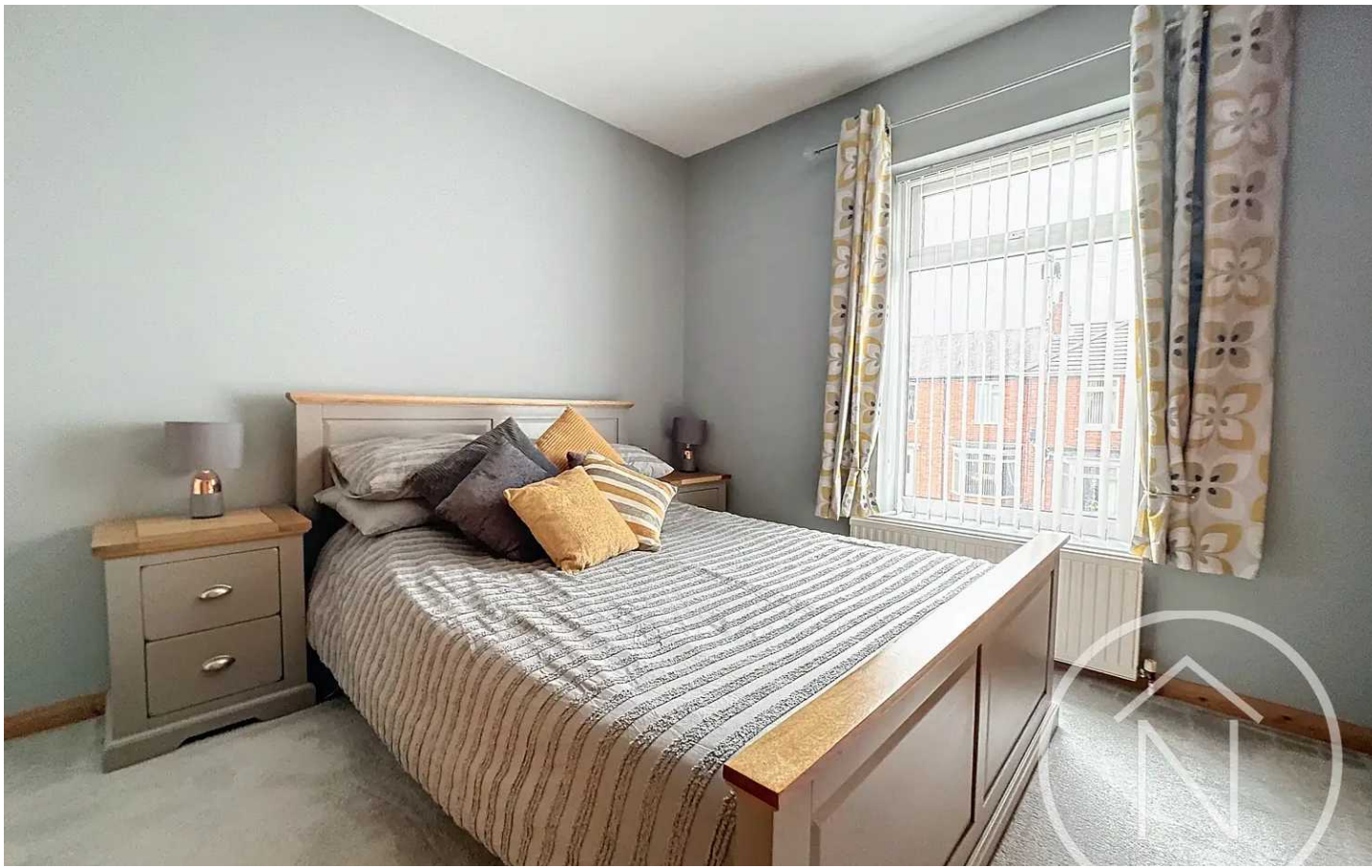
7' 2" x 8' 5" (2.19m x 2.57m)

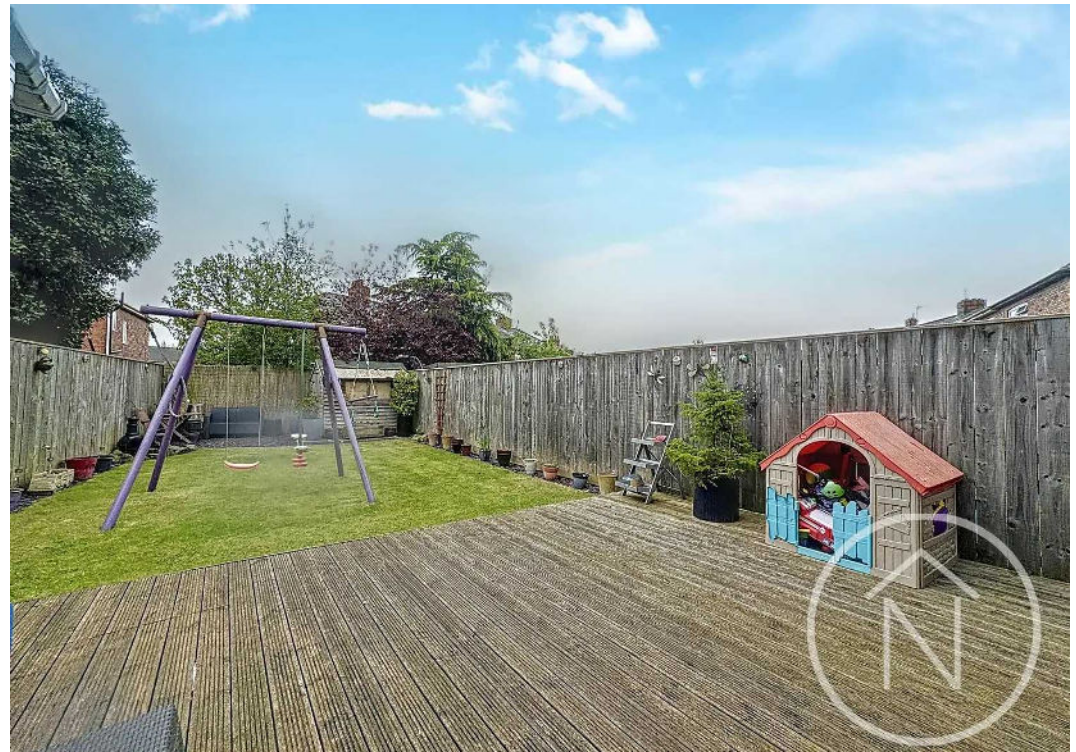
Driveway

2 Parking Spaces



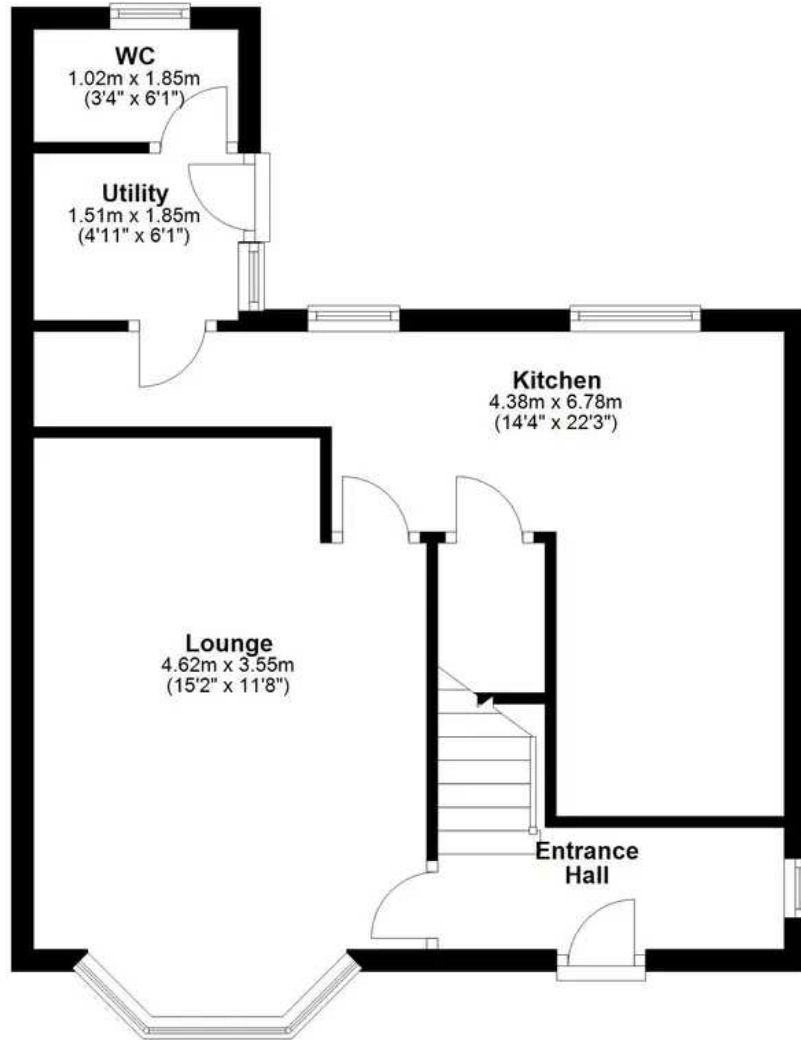
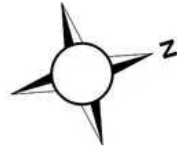






Ground Floor

Approx. 43.2 sq. metres (465.4 sq. feet)



First Floor

Approx. 40.8 sq. metres (439.4 sq. feet)



Total area: approx. 84.1 sq. metres (904.8 sq. feet)

floor plan(s) by Northgate[®] for illustration purpose only all measurements are approximate.
Plan produced using PlanUp.



Northgate - Teesside

8 Town Square, Billingham - TS23 2LY

01642 813222

billingham@northgates.net

www.northgates.co.uk/

While we have made efforts to ensure the accuracy of the information provided in our sales particulars, please note that we have gathered this information from the seller. Should you require further details or clarification on any specific matter, we kindly request you to contact our office where we are ready to gather evidence or conduct further investigations on your behalf. It is important to note that Northgate has not tested any of the services, appliances, or equipment within this property. Therefore, we strongly recommend that prospective buyers arrange for their independent surveys or service reports before finalising the purchase of the property.