



Budworth Close, Billingham

Billingham



In Excess of £220,000



3 Budworth Close

Billingham

- Four Bedroom Detached
- South Facing Rear Garden
- Three Reception Rooms
- Driveway & Garage
- Bathroom & Ground Floor Wc
- Energy Efficiency Rating: D
- Council Tax Band: D | Tenure: Freehold

Nestled within a charming cul-de-sac in Billingham, this four-bedroom detached property offers fantastic family living throughout. Boasting a south-facing rear garden, this residence is complemented by three reception rooms, a driveway, and a garage. The accommodation is thoughtfully designed and comprises a porch, hallway, ground floor WC, a cosy lounge with a wood-burning stove, a dining room, a conservatory, a well-appointed kitchen, a landing, a bathroom, and four generously-sized bedrooms. This home is a true testament to comfortable and modern living, making it an ideal sanctuary for families seeking both space and style.

Step outside into the expansive outdoor space, where the property truly comes into its own. The south-facing rear garden is a haven for relaxation and entertaining, offering ample space for alfresco dining and children's play. With a garage and driveway completing the outdoor amenities, this property offers everything a discerning homeowner could desire.



Porch

6' 1" x 6' 7" (1.85m x 2.01m)

Hall

17' 4" x 6' 7" (5.28m x 2.00m)

Lounge

16' 9" x 12' 2" (5.11m x 3.71m)

Dining Room

14' 9" x 15' 4" (4.50m x 4.67m)

Kitchen

15' 9" x 8' 1" (4.80m x 2.46m)

Conservatory

10' 9" x 13' 5" (3.28m x 4.09m)

Ground Floor Wc

Landing

9' 1" x 9' 0" (2.76m x 2.74m)

Bathroom

8' 2" x 5' 10" (2.49m x 1.78m)

Bedroom One

13' 9" x 8' 7" (4.19m x 2.62m)

Bedroom Two

11' 7" x 8' 9" (3.53m x 2.67m)

Bedroom Three

13' 9" x 6' 5" (4.19m x 1.96m)

Bedroom Four

8' 6" x 6' 3" (2.59m x 1.91m)





GARDEN

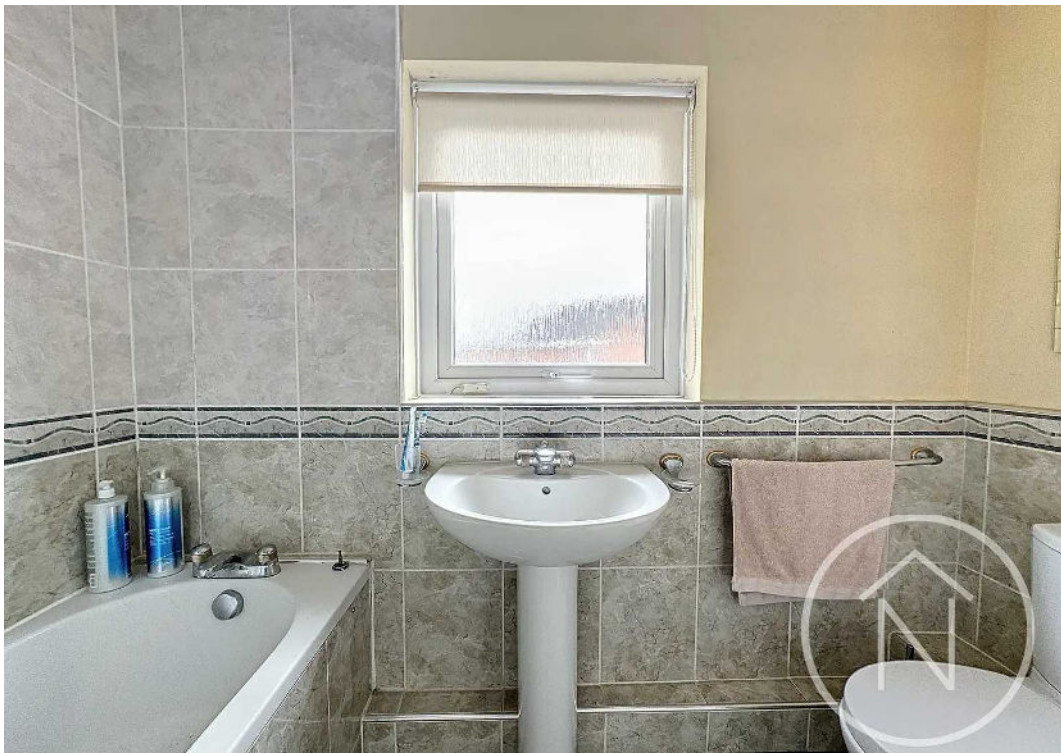
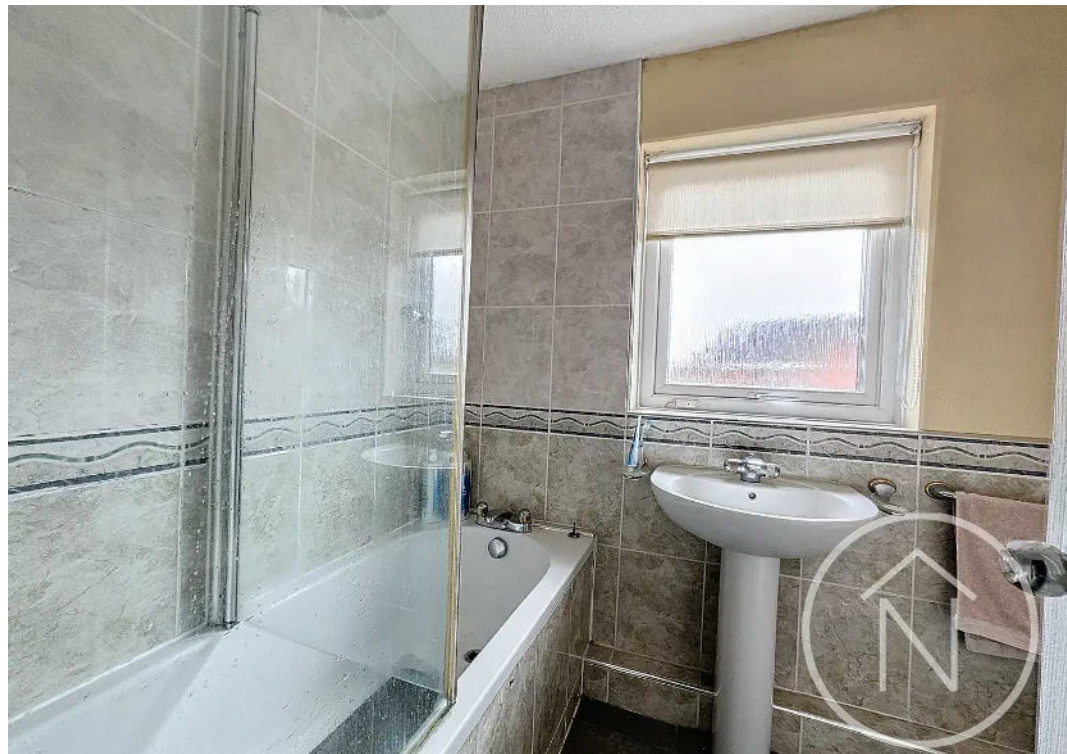
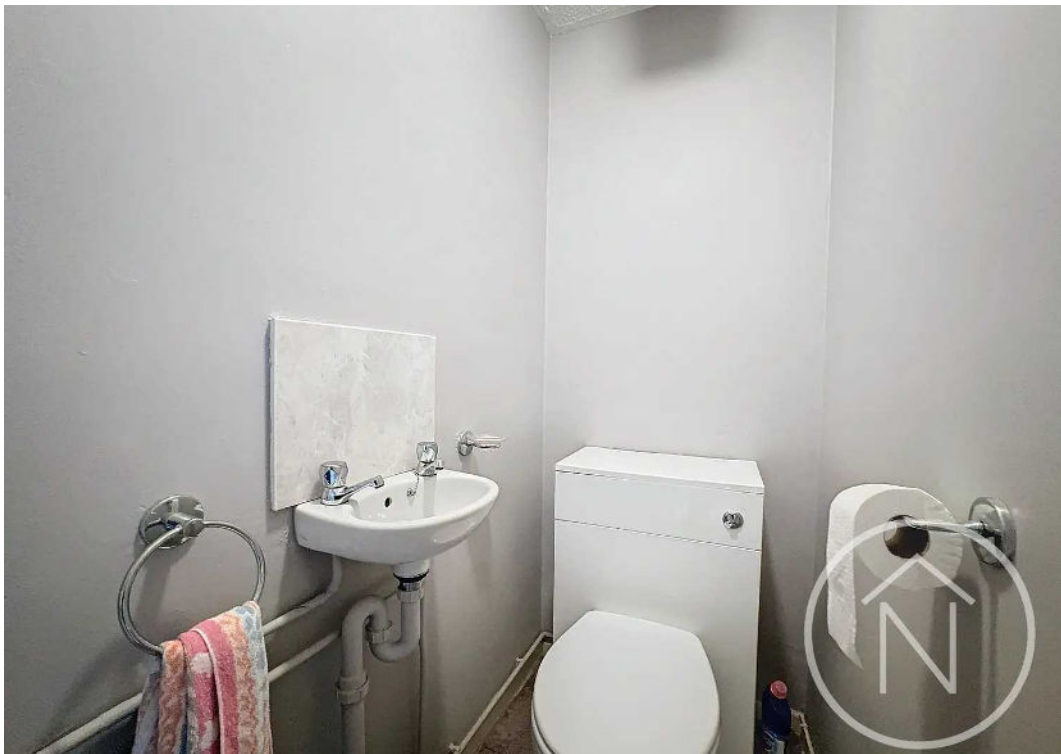
GARAGE

Single Garage

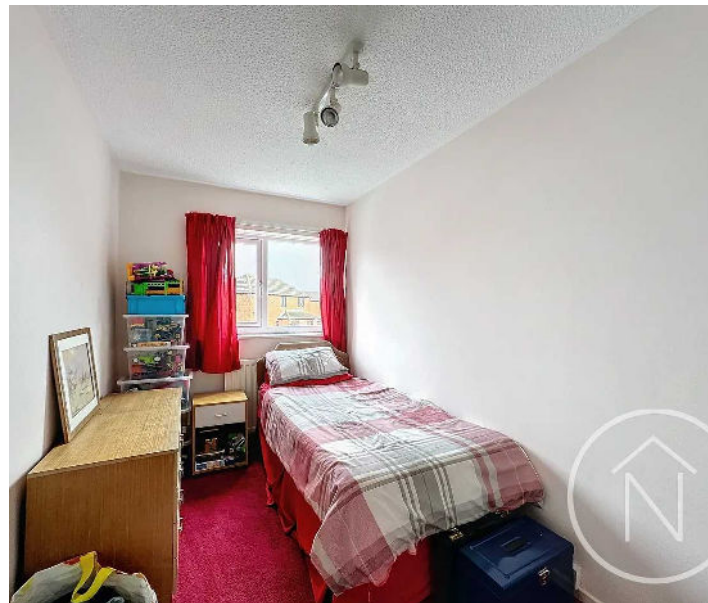
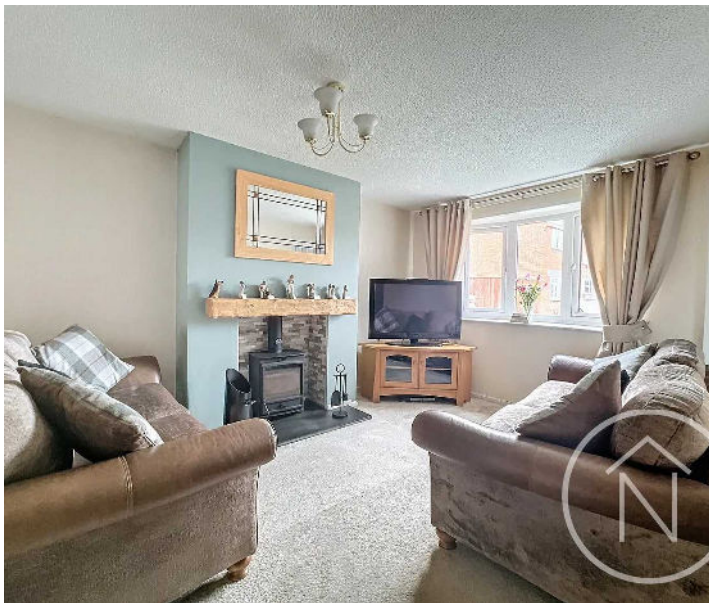
DRIVEWAY

1 Parking Space



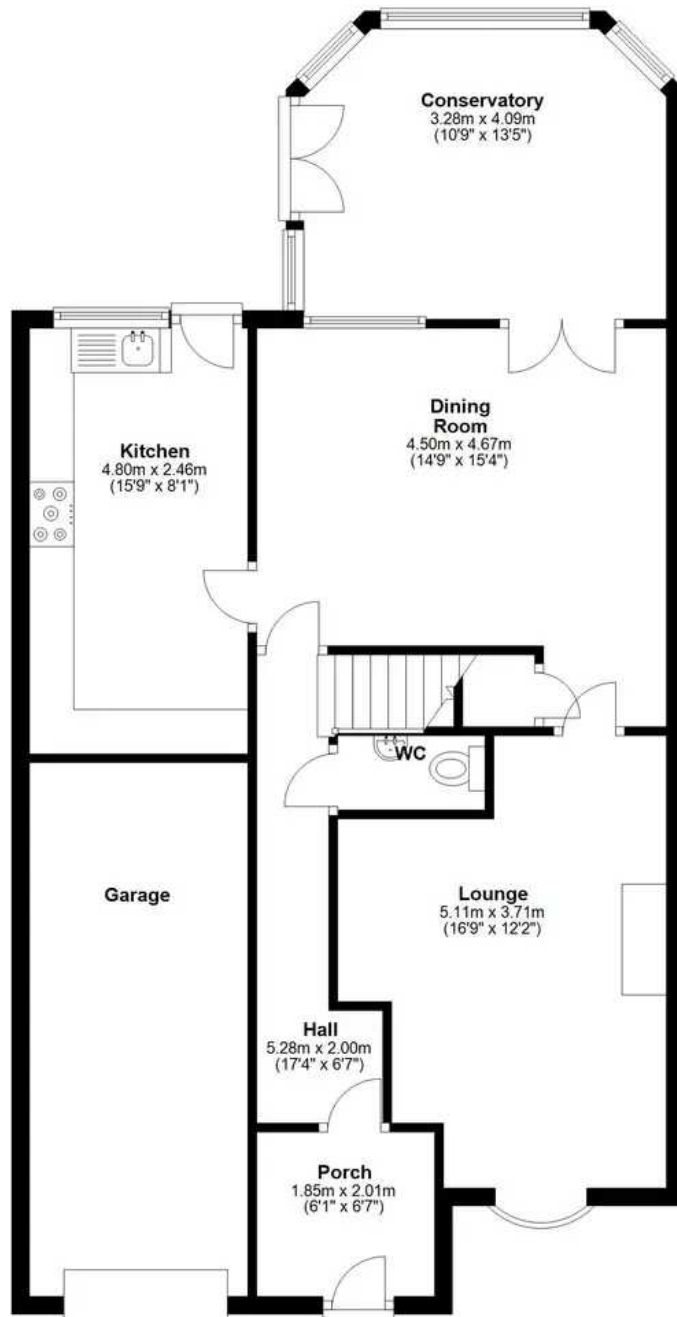


GARDEN



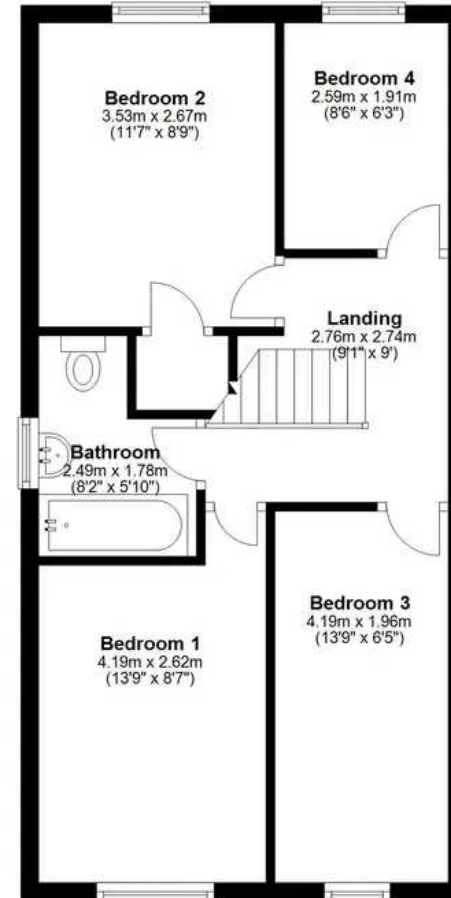
Ground Floor

Approx. 72.7 sq. metres (782.9 sq. feet)



First Floor

Approx. 45.5 sq. metres (489.7 sq. feet)



Total area: approx. 118.2 sq. metres (1272.6 sq. feet)

floor plan(s) by Northgate for illustration purpose only all measurements are approximate.
Plan produced using PlanUp.



Northgate - Teesside

8 Town Square, Billingham - TS23 2LY

01642 813222 • billingham@northgates.net • www.northgates.co.uk/

