



4 Ritson Road, Newton Aycliffe

Newton Aycliffe



In Excess of £120,000



4 Ritson Road

Newton Aycliffe, Newton Aycliffe

Presenting a wonderful opportunity to acquire a charming three-bedroom family home in a popular location of Newton Aycliffe, this property is ideal for those looking to put their personal touch on a property.

As you step inside, you are greeted by a spacious entrance hall leading to the lounge. The kitchen-diner offers ample space, complemented by a convenient utility area. A newly fitted wet room and three good size bedrooms to the first floor. Additionally, the property boasts a large single garage, a driveway for off-road parking, and gardens, creating a lovely outdoor space for enjoyment.

Offered with no onward chain, this property presents a rare opportunity to tailor a home to your own specifications. Book your viewing today to explore the potential of this home.

Council Tax band: B

Tenure: Freehold

- Three Bedroom Family Home
- Lounge, Kitchen, Utility area
- Newly Fitted Wet Room
- Large Single Garage, Driveway and Gardens
- No Onward Chain
- Energy efficiency rate: TBC
- Loft space is fully boarded



Entrance Hallway

Living Room:

20'4" x 11'8" (6.20m x 3.56m)

Kitchen:

12'8" x 9'2" (3.86m x 2.79m)

Utility Area:

11'7" x 5'3" (3.53m x 1.60m)

First Floor

Bedroom One:

11'7" x 10'1" (3.53m x 3.07m)

Bedroom Two:

8'10" x 12'2" (2.69m x 3.71m)

Bedroom Three:

7'2" x 8'10" (2.18m x 2.69m)

Bathroom (Wetroom):

7'9" x 5'11" (2.36m x 1.80m)

Garage:

24'11" x 10'6" (7.59m x 3.20m)





GARDEN

Garden Front & Rear

GARAGE

Single Garage

Larger than average Garage: 24'11" x 10'6" (7.59m x 3.20m).

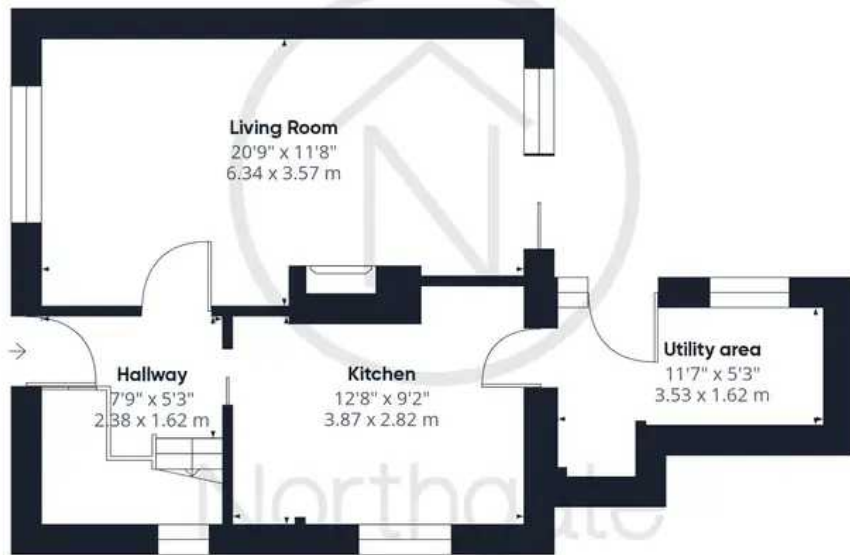
DRIVEWAY

1 Parking Space

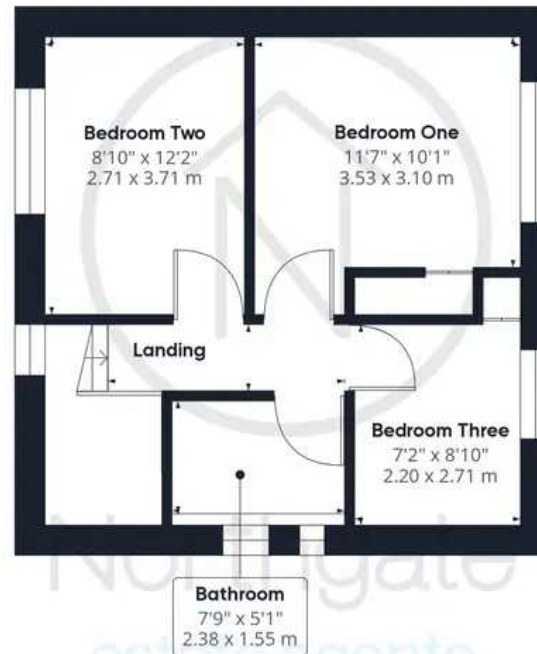
Share-drive leads to parking in front of the garage.







Ground Floor Building 1



Floor 1 Building 1



Ground Floor Building 2



Approximate total area⁽¹⁾
1151.09 ft²
106.94 m²

(1) Excluding balconies and terraces

While every attempt has been made to ensure accuracy, all measurements are approximate, not to scale. This floor plan is for illustrative purposes only.

GIRAFFE360



Northgate - County Durham

Northgate Estate Agents, Suite 3 - DL5 4DH

01325 728333 • info@northgates.net • www.northgates.co.uk/



These particulars do not constitute, nor constitute part of, an offer or contract. No warranties are provided. Verify details through inspection. Northgate estate agents, nor any person in their employment has any authority to make or give any representation or warranty whatever in the relation to this property. All measurements are approximate.