



Glaisdale Court, Darlington

Darlington



In Excess of £98,500



## 101 Glaisdale Court

Darlington, Darlington

Introducing a stylish and contemporary two-bedroom ground floor apartment that boasts a prime location close to the bustling town centre. This modern residence offers a sleek finish throughout, providing a comfortable and inviting living space. Its open-plan layout seamlessly integrates the living room, dining area, and kitchen, creating a fluid and spacious atmosphere perfect for relaxation and entertainment. The property features patio doors that lead out to the communal gardens, offering a tranquil retreat from the urban buzz. The apartment benefits from large windows that flood the rooms with natural light, enhancing the overall ambience. The two well-proportioned bedrooms provide ample space for rest and rejuvenation, while the modern bathroom adds a touch of luxury to every-day living.

Outside, the property offers a delightful communal garden area, providing residents with a serene outdoor space to unwind and enjoy nature. The well-maintained grounds offer a peaceful retreat from the bustling town centre, creating a perfect balance between urban convenience and natural beauty. The communal gardens are ideal for hosting gatherings with friends and family or simply relaxing in the fresh air. Residents can take advantage of the green space for leisure activities such as picnics and outdoor yoga sessions. The patio doors from the apartment open up to this charming outdoor space, seamlessly extending the living area to the tranquil gardens. Whether seeking a quiet spot for morning coffee or a social setting for evening drinks, the communal gardens offer a versatile and welcoming environment for all residents to enjoy. Embrace the opportunity to live in a property that harmoniously combines modern interiors with access to a peaceful outdoor oasis.



#### Hallway

13' 0" x 3' 7" (3.96m x 1.09m)

#### Kitchen/Lounge/Diner

12' 5" x 20' 7" (3.78m x 6.27m)

#### Bedroom 1

10' 9" x 14' 1" (3.28m x 4.29m)

#### Bedroom 2

8' 9" x 14' 2" (2.67m x 4.32m)

#### Bathroom

6' 4" x 7' 6" (1.93m x 2.29m)





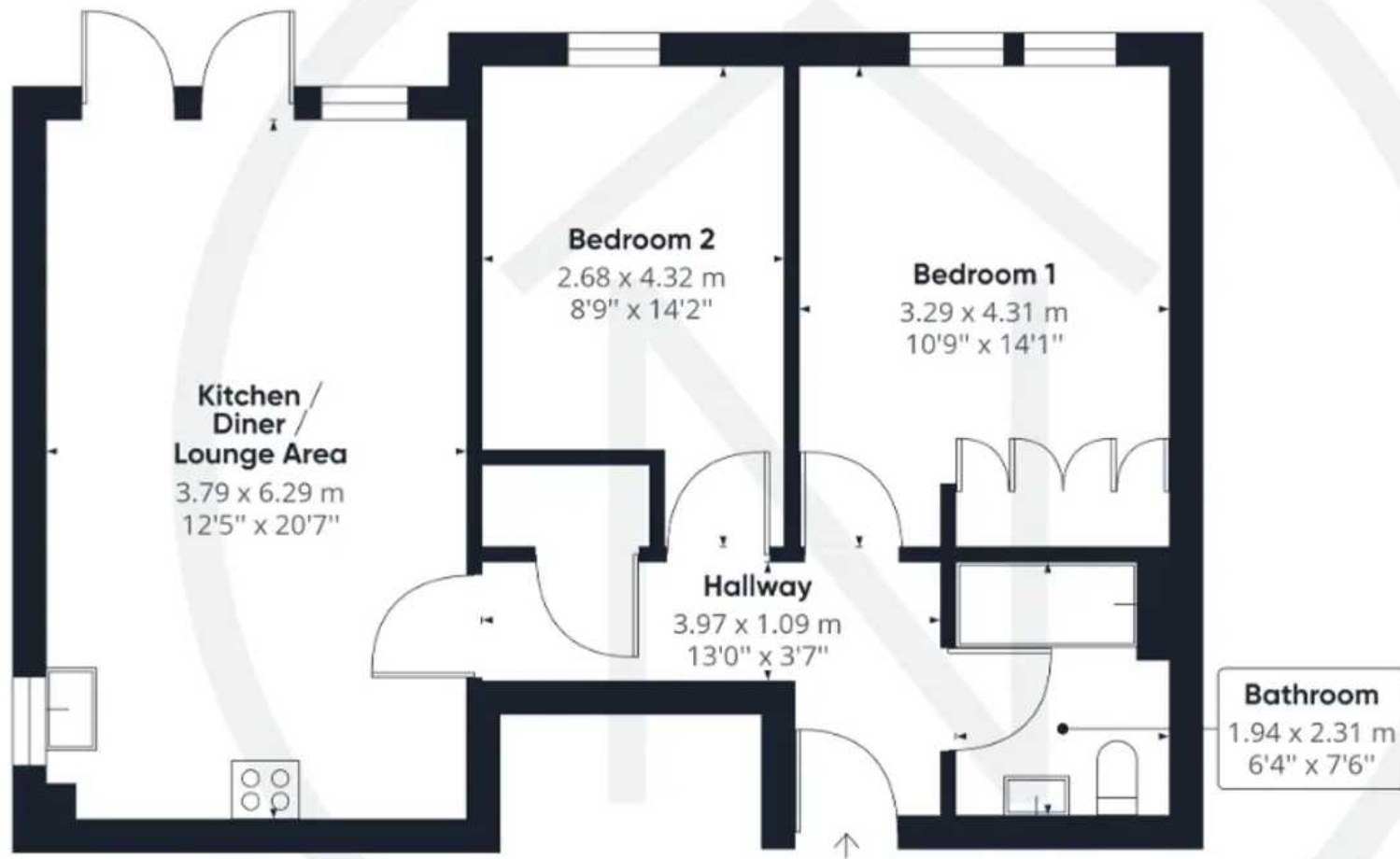
COMMUNAL GARDEN

OFF STREET









Approximate total area<sup>(1)</sup>

652.05 ft<sup>2</sup>

60.58 m<sup>2</sup>

(1) Excluding balconies and terraces

While every attempt has been made to ensure accuracy, all measurements are approximate, not to scale. This floor plan is for illustrative purposes only.

GIRAFFE360



## Northgate - County Durham

Northgate Estate Agents, Suite 3 - DL5 4DH

01325 728333 • [info@northgates.net](mailto:info@northgates.net) • [www.northgates.co.uk/](http://www.northgates.co.uk/)



These particulars do not constitute, nor constitute part of, an offer or contract. No warranties are provided. Verify details through inspection. Northgate estate agents, nor any person in their employment has any authority to make or give any representation or warranty whatever in the relation to this property. All measurements are approximate.