



Manor Place, Stockton-On-Tees

Stockton-On-Tees



Offers Invited Between £200,000 And £210,000



Manor Place

Stockton-On-Tees

Offers Invited Between £200,000 And £210,000

This beautiful bay-fronted semi detached exudes kerb appeal, while the property's corner plot boasts a spacious driveway and detached garage, providing ample parking and storage space. Step inside to discover a beautifully presented interior that seamlessly blends contemporary design with comfort. The living spaces are bathed in natural light, creating a warm and inviting atmosphere throughout. The modern kitchen is equipped with sleek cabinetry and ample counter space for meal preparation. Upstairs, the three bedrooms offer peaceful retreats, with the master bedroom featuring a bay window that floods the room with sunlight. The family bathroom is a sanctuary of relaxation, complete with a luxurious bath-tub and stylish fixtures.

Venture outside to the west-facing rear garden, a private oasis perfect for outdoor entertaining and enjoyment. The well-maintained garden provides a tranquil setting for al fresco dining, gardening, or simply unwinding after a long day. Whether hosting gatherings with friends and family or seeking a quiet moment of solitude, this outdoor space offers endless possibilities. Additionally, the property benefits from gas central heating and UPVC double glazing, ensuring year-round comfort and energy efficiency. With a prime location close to local amenities, transport links, and green spaces, this home offers the perfect balance of convenience and tranquillity.

- Three Bedroom Bay Fronted Semi Detached
- Corner Plot With Large Driveway & Detached Garage
- West Facing Rear Garden



- Three Bedroom Bay Fronted Semi Detached
- Corner Plot With Large Driveway & Detached Garage
- West Facing Rear Garden
- Modern Interior Throughout
- Gas Central Heating & UPVC Double Glazing
- Energy Efficiency Rating: TBC

Entrance Hall

14' 4" x 6' 8" (4.36m x 2.02m)

Lounge/Diner

24' 4" x 11' 8" (7.41m x 3.56m)

Kitchen

9' 5" x 8' 1" (2.88m x 2.47m)

Conservatory

8' 11" x 8' 1" (2.71m x 2.47m)

Landing

7' 10" x 8' 9" (2.38m x 2.66m)

Bathroom

7' 10" x 6' 6" (2.38m x 1.99m)

Bedroom One

12' 8" x 11' 11" (3.86m x 3.63m)

Bedroom Two

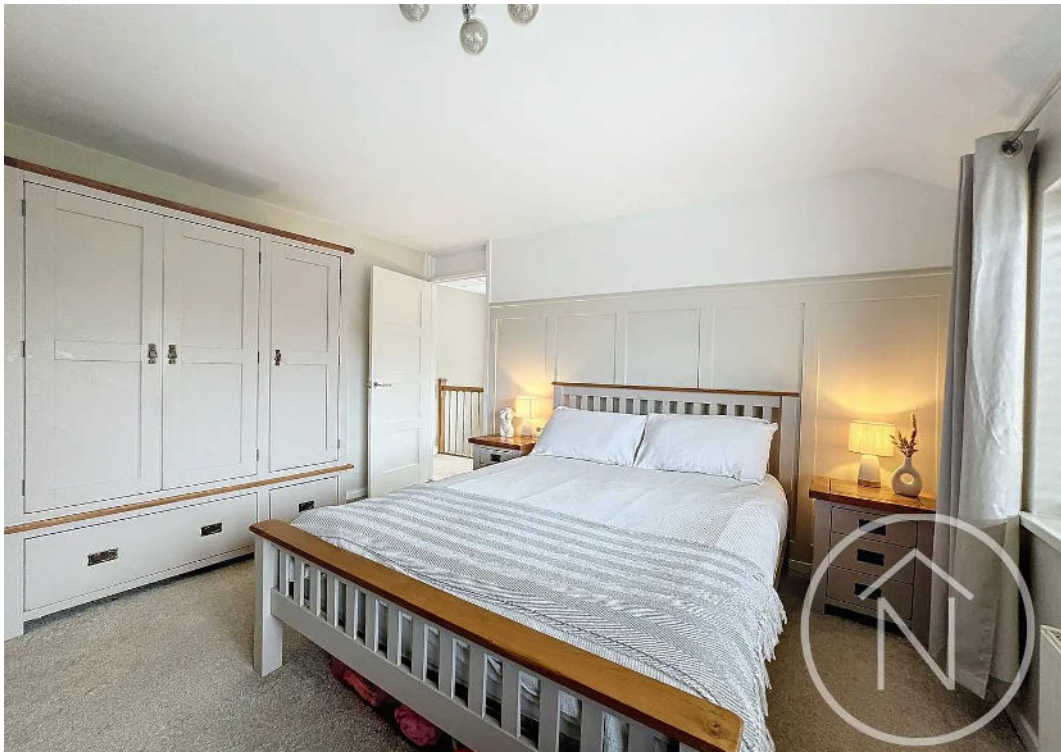
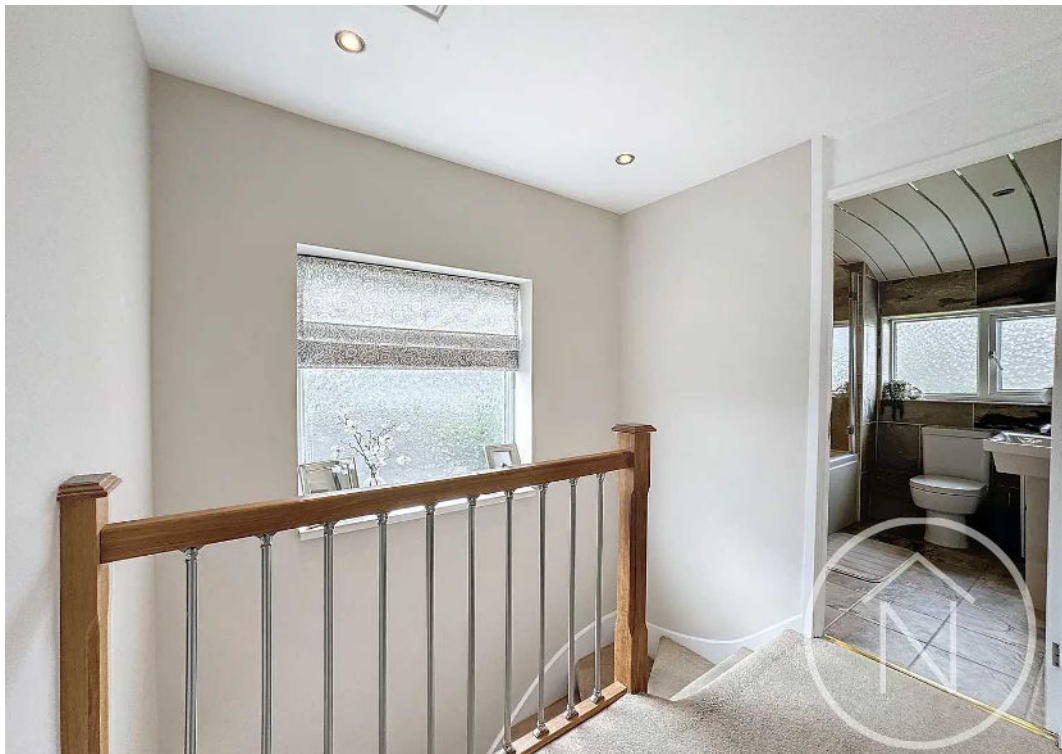
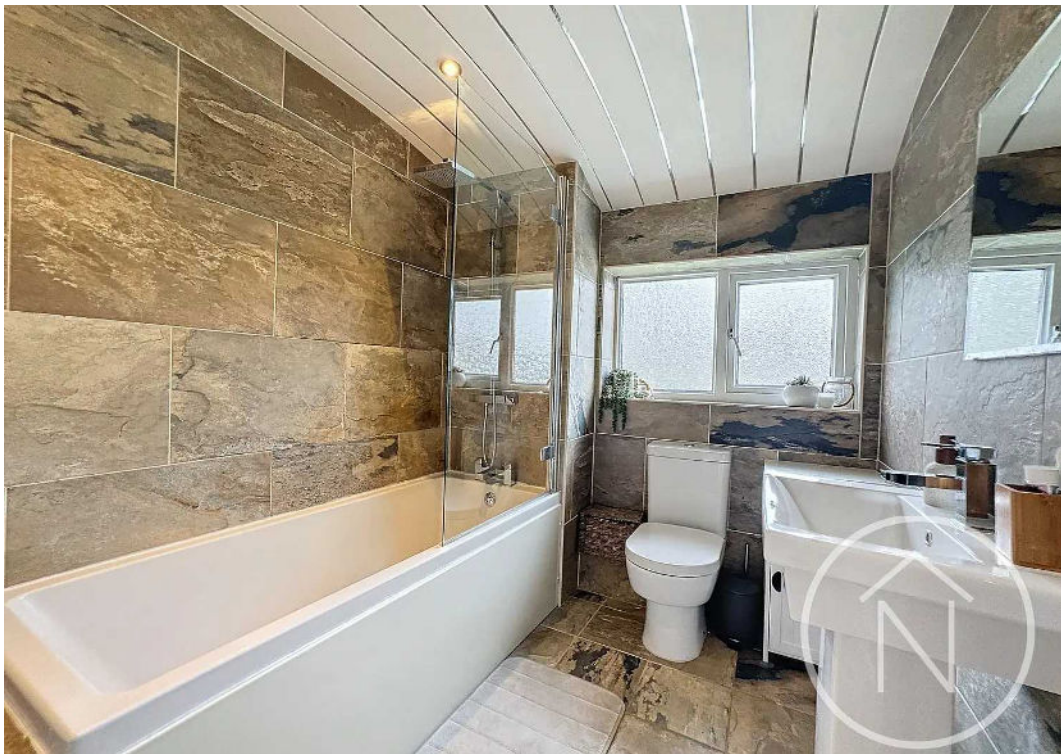
14' 0" x 9' 7" (4.26m x 2.91m)

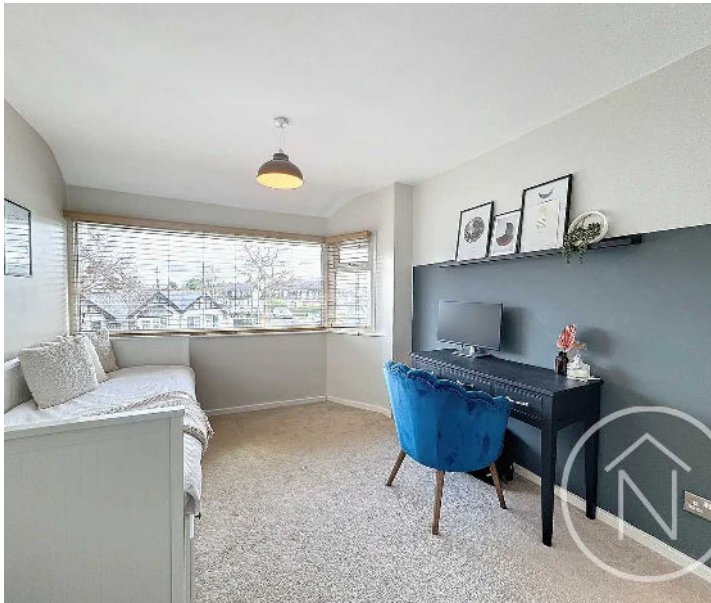
Bedroom Three

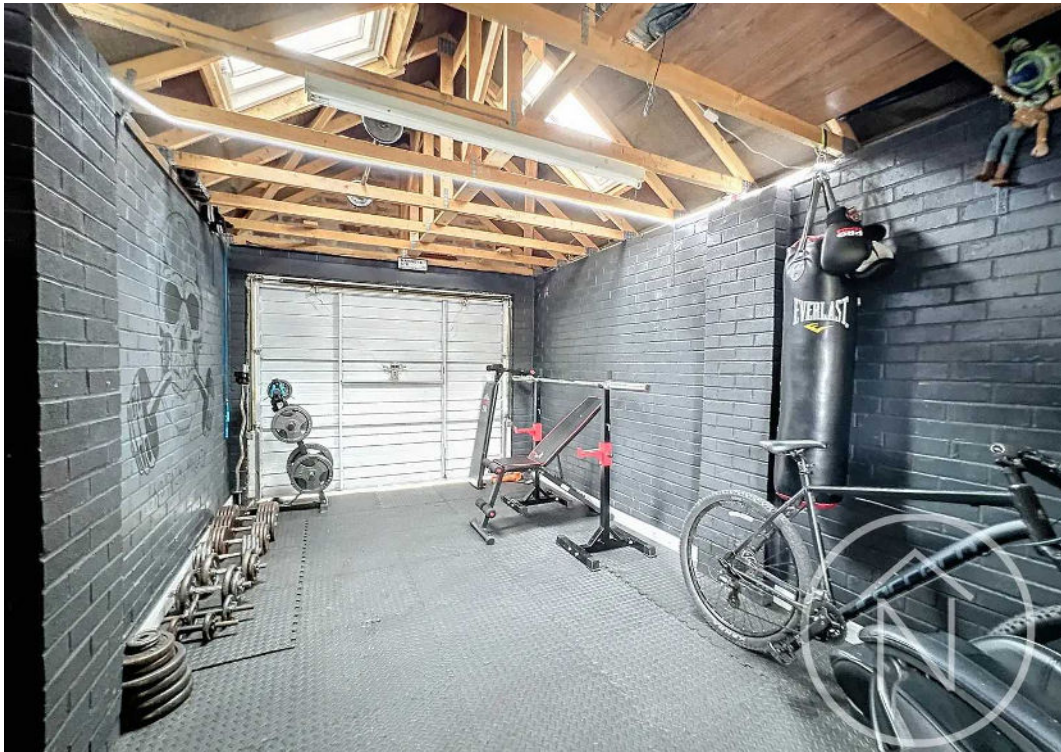
7' 11" x 8' 9" (2.41m x 2.67m)





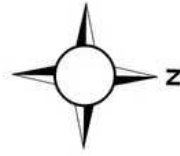






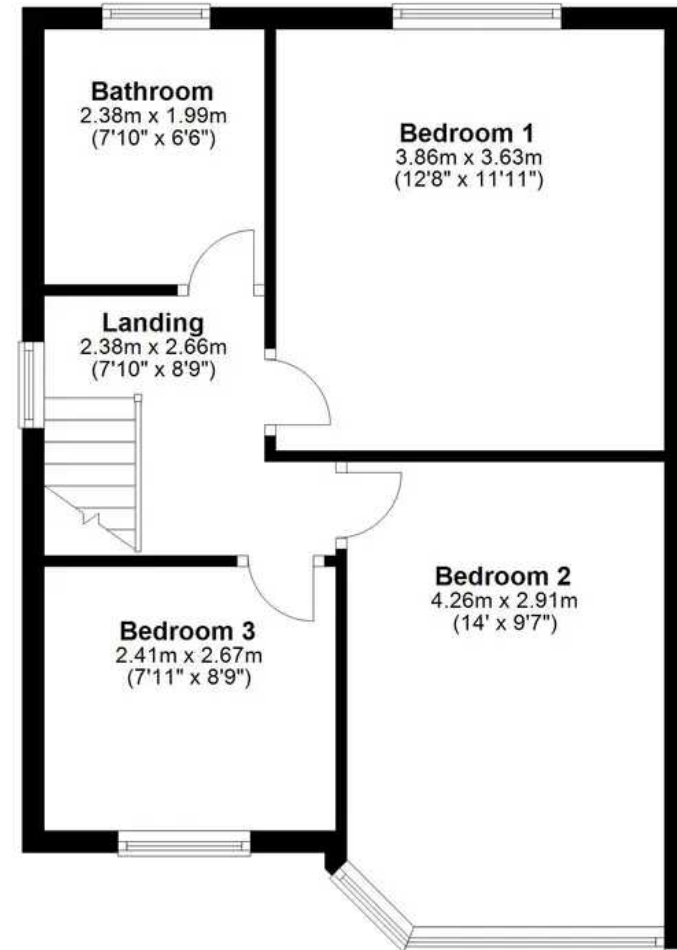
Ground Floor

Approx. 48.9 sq. metres (526.4 sq. feet)



First Floor

Approx. 44.3 sq. metres (476.8 sq. feet)



Total area: approx. 93.2 sq. metres (1003.2 sq. feet)

floor plan(s) by Northgate[®] for illustration purpose only all measurements are approximate.
Plan produced using PlanUp.



Northgate - Teesside

8 Town Square, Billingham - TS23 2LY

01642 813222 • billingham@northgates.net • www.northgates.co.uk/

