



Low Avenue, Chilton

Ferryhill



Offers in Region of £325,000



9 Low Avenue

Chilton, Ferryhill

Tucked away occupying a corner plot on a modern estate, this exquisite four-bedroom detached property offers the ultimate modern family living experience. Upon entering the home, you are greeted by a spacious hallway leading to multiple reception rooms, to the right as you walk in you can find the lounge area offering a great space to unwind after a long day with a feature wall adding to the modern feel of the home. As you continue towards the rear of the home you are greeted by the heart of the home, a perfect for entertaining guests or enjoying peaceful evenings with family. This area comprises of an open plan kitchen/dining area comprising of integrated fridge/freezer, microwave, oven, dishwasher and electric hob all manufactured by Hotpoint. The kitchen area flows seamlessly through to the rear seating area with bi-fold doors that seamlessly connect the interior living space with the landscaped rear garden, flooding the rooms with natural light and creating a seamless indoor-outdoor flow. The ground floor boasts a convenient WC and utility room for added practicality.

The upstairs of the home is very well proportioned with a spacious and airy landing area leading to four sizeable bedrooms, the master bedroom offers a great space to relax and features an en-suite bathroom for added comfort, A family bathroom caters for the other bedrooms and completes the upstairs of the home.

Moving outside, a meticulously maintained rear garden provides a private oasis for relaxation and outdoor activities. Enclosed for privacy and security, this peaceful retreat is an ideal spot for al fresco dining, summer barbeques, or simply unwinding after a busy day. Additionally, a garage offers ample storage space and parking, ensuring convenience for you and your family.



Hallway

11' 4" x 6' 4" (3.45m x 1.93m)

Living Room

13' 10" x 10' 1" (4.22m x 3.07m)

Kitchen

15' 3" x 16' 9" (4.65m x 5.11m)

Living Area

9' 11" x 16' 9" (3.02m x 5.11m)

Utility Room

6' 7" x 4' 4" (2.01m x 1.32m)

Wc

6' 5" x 5' 2" (1.96m x 1.57m)

Garage

19' 8" x 9' 9" (5.99m x 2.97m)

Landing

7' 7" x 12' 8" (2.31m x 3.86m)

Bedroom

12' 2" x 13' 2" (3.71m x 4.01m)

En-suite

7' 8" x 5' 2" (2.34m x 1.57m)

Bedroom

14' 5" x 9' 1" (4.39m x 2.77m)

Bedroom

11' 7" x 9' 11" (3.53m x 3.02m)

Bedroom

12' 5" x 7' 5" (3.78m x 2.26m)

Bathroom

6' 10" x 6' 0" (2.08m x 1.83m)





GARDEN

rear enclosed garden

GARAGE

Single Garage

DRIVEWAY

2 Parking Spaces

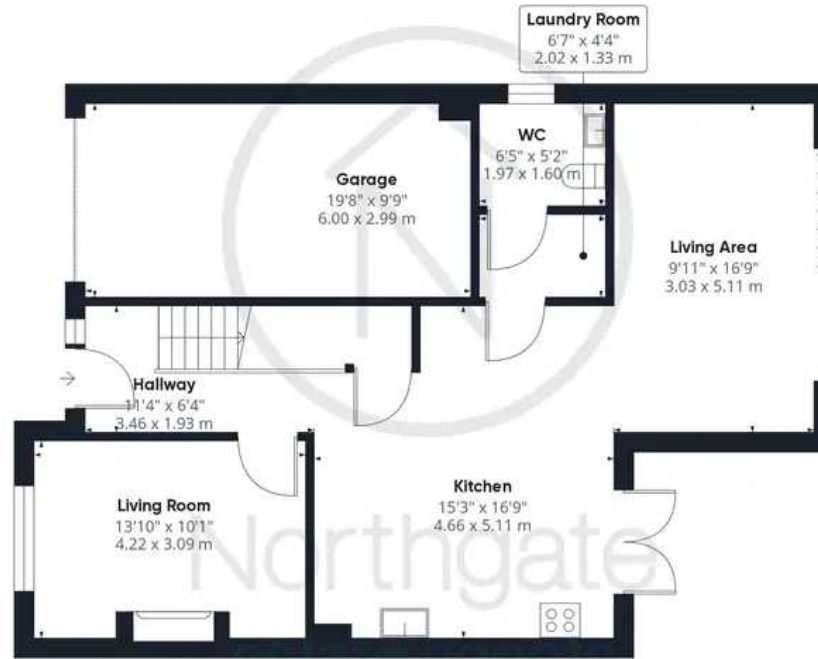




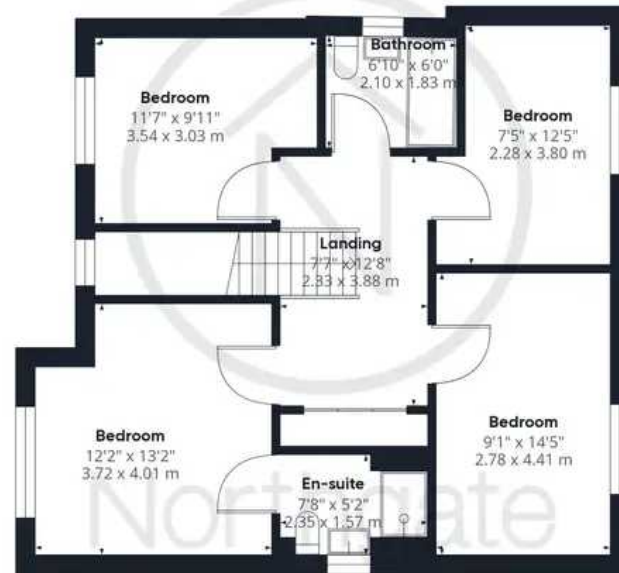




Northgate
estate agents



Ground Floor



Floor 1

Approximate total area⁽¹⁾

1582.8 ft²

147.05 m²

(1) Excluding balconies and terraces

While every attempt has been made to ensure accuracy, all measurements are approximate, not to scale. This floor plan is for illustrative purposes only.

GIRAFFE360



Northgate - County Durham

Northgate Estate Agents, Suite 3 - DL5 4DH

01325 728333 • info@northgates.net • www.northgates.co.uk/



These particulars do not constitute, nor constitute part of, an offer or contract. No warranties are provided. Verify details through inspection. Northgate estate agents, nor any person in their employment has any authority to make or give any representation or warranty whatever in the relation to this property. All measurements are approximate.