



**19 Pease Way, Newton Aycliffe**

Offers in Region of **£120,000**



## 19 Pease Way

Newton Aycliffe, Newton Aycliffe

this charming 3-bedroom mid-terraced property is ideal for those seeking a comfortable and well-located home within easy reach of the town centre. The combination of spacious interiors, delightful rear garden, makes this house a truly enticing prospect for any discerning buyer.

Council Tax band: A

Tenure: Freehold

EPC Energy Efficiency Rating:

EPC Environmental Impact Rating:



**Entrance Hall**

8' 8" x 4' 8" (2.64m x 1.42m)

**Lounge**

12' 11" x 9' 9" (3.94m x 2.97m)

**Dining Room**

10' 9" x 9' 5" (3.28m x 2.87m)

**Kitchen**

11' 2" x 16' 3" (3.40m x 4.95m)

**Landing**

8' 11" x 2' 8" (2.72m x 0.81m)

**Bathroom**

8' 8" x 5' 4" (2.64m x 1.63m)

**Bedroom 1**

12' 11" x 9' 10" (3.94m x 3.00m)

**Bedroom 2**

11' 1" x 9' 6" (3.38m x 2.90m)

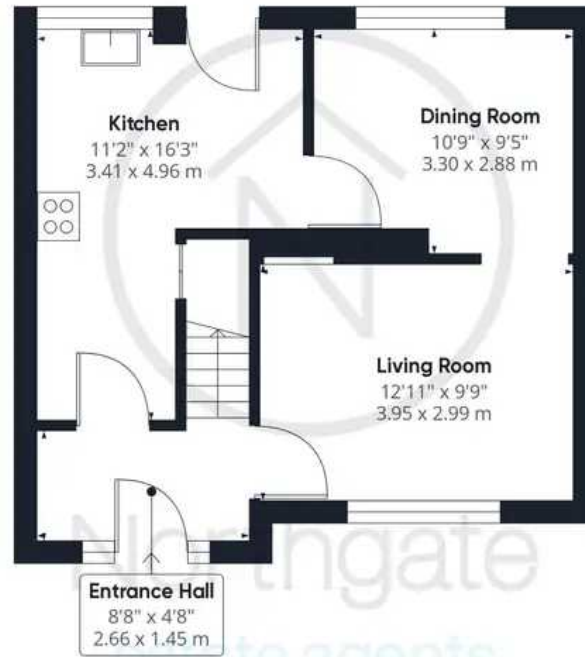
**Bedroom 3**

11' 3" x 6' 0" (3.43m x 1.83m)





Northgate  
estate agents



Ground Floor

Approximate total area<sup>0</sup>

846.89 ft<sup>2</sup>

78.68 m<sup>2</sup>



Floor 1

Excluding balconies and terraces

While every attempt has been made to ensure accuracy, all measurements are approximate, not to scale. This floor plan is for illustrative purposes only.

GIRAFFE360



