



Kemble Green South, Newton Aycliffe

Offers in Region of £120,000





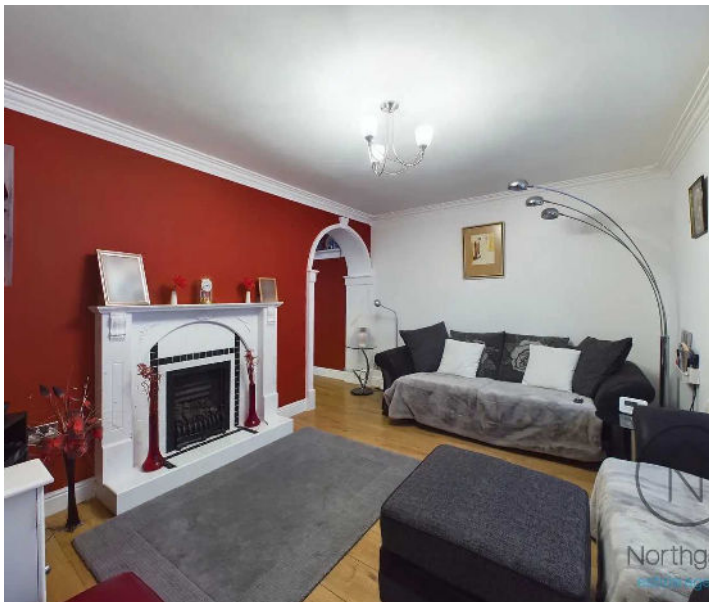
## 49 Kemble Green South

Newton Aycliffe, Newton Aycliffe

Council Tax band: A

EPC Energy Efficiency Rating:

EPC Environmental Impact Rating:





**Hallway**

5' 10" x 2' 9" (1.78m x 0.84m)

**Lounge**

9' 9" x 12' 10" (2.97m x 3.91m)

**Dining/Reception Room**

22' 4" x 8' 2" (6.81m x 2.49m)

**Rear Porch**

4' 8" x 9' 3" (1.42m x 2.82m)

**Kitchen**

12' 8" x 5' 9" (3.86m x 1.75m)

**Landing**

2' 8" x 9' 4" (0.81m x 2.84m)

**Bedroom 1**

9' 9" x 10' 8" (2.97m x 3.25m)

**Bedroom 2**

9' 6" x 11' 2" (2.90m x 3.40m)

**Bedroom 3**

11' 1" x 5' 11" (3.38m x 1.80m)

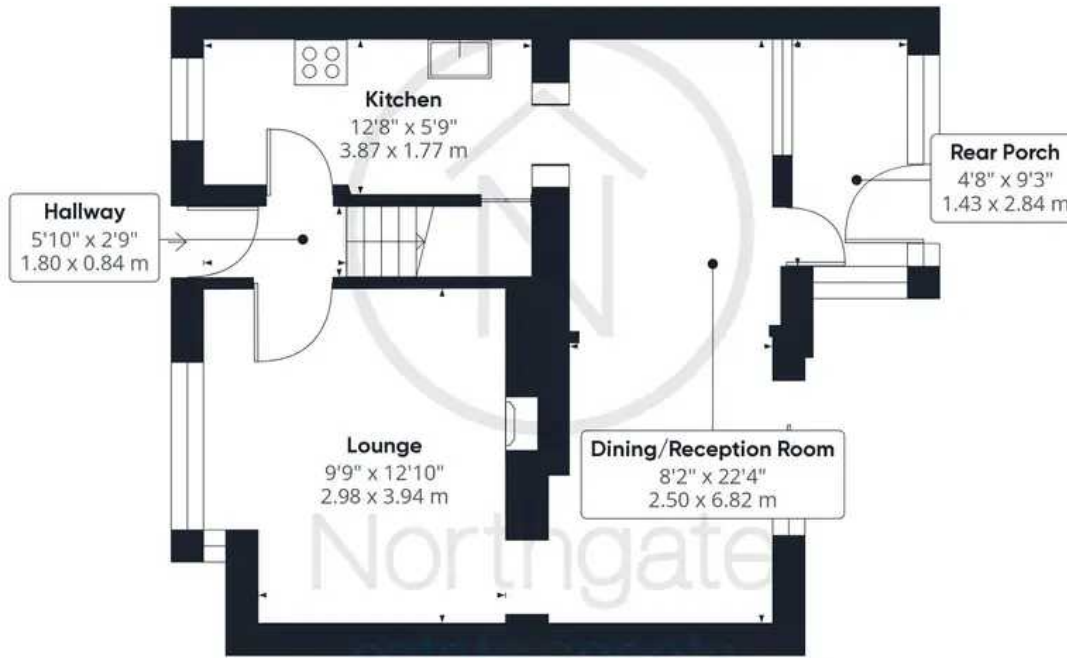
**Bathroom**

5' 3" x 8' 6" (1.60m x 2.59m)





Northgate  
estate agents



Ground Floor

Approximate total area<sup>0</sup>

910.94 ft<sup>2</sup>

84.63 m<sup>2</sup>



Floor 1

Excluding balconies and terraces

While every attempt has been made to ensure accuracy, all measurements are approximate, not to scale. This floor plan is for illustrative purposes only.

GIRAFFE360





