



Kimblesworth Walk, Newton Aycliffe

Offers in Region of £65,000



217 Kimblesworth Walk

Newton Aycliffe, Newton Aycliffe

Three bedroom mid-terraced family home in Newton Aycliffe close to local amenities.
Council Tax band: A

Tenure: Freehold

EPC Energy Efficiency Rating:

EPC Environmental Impact Rating:



Hallway

16' 5" x 5' 10" (5.00m x 1.78m)

Lounge/Dining Room

10' 8" x 17' 5" (3.25m x 5.31m)

Kitchen

10' 5" x 8' 4" (3.18m x 2.54m)

Wc

5' 8" x 2' 8" (1.73m x 0.81m)

Landing

13' 8" x 5' 9" (4.17m x 1.75m)

Bedroom 1

10' 5" x 14' 8" (3.18m x 4.47m)

Bedroom 2

10' 6" x 10' 5" (3.20m x 3.18m)

Bedroom 3

5' 11" x 11' 4" (1.80m x 3.45m)

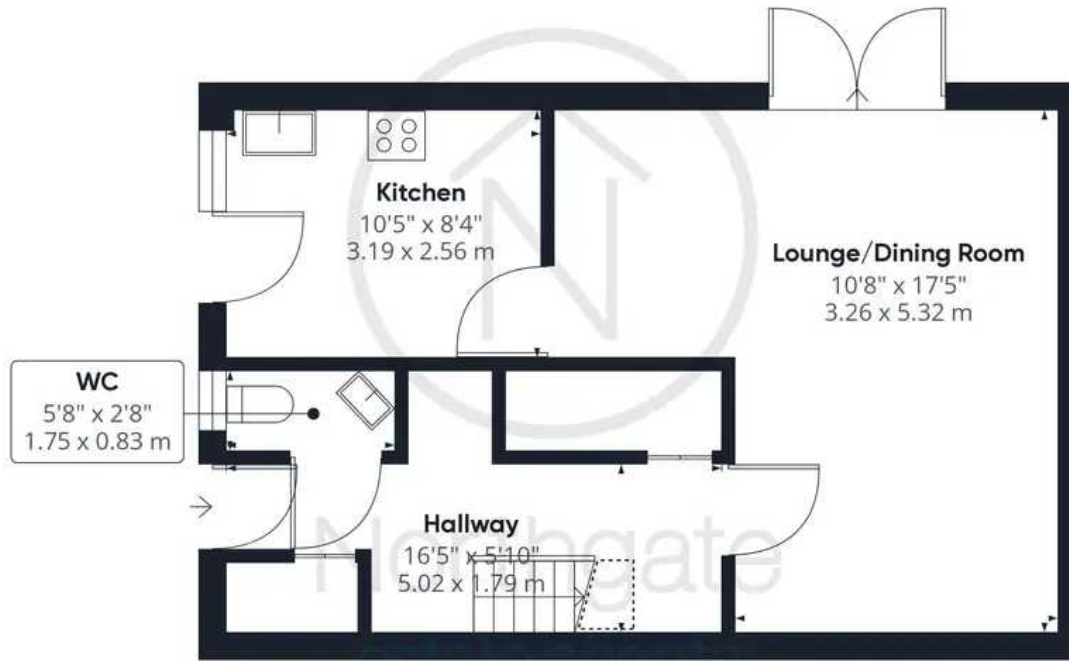
Bathroom

5' 7" x 6' 9" (1.70m x 2.06m)





Northgate
estate agents



Ground Floor



Floor 1

Approximate total area⁽¹⁾

910.08 ft²

84.55 m²

Reduced headroom

14.61 ft²

1.36 m²

(1) Excluding balconies and terraces

Reduced headroom
(below 1.5m/4.92ft)

While every attempt has been made to ensure accuracy, all measurements are approximate, not to scale. This floor plan is for illustrative purposes only.

GIRAFFE360



