



Westmorland Way, Newton Aycliffe

Offers in Region of £230,000



35 Westmorland Way

Newton Aycliffe, Newton Aycliffe

Well presented three bedroom detached family home just a short walk from Newton Aycliffe town centre.

Council Tax band: C

Tenure: Freehold

EPC Energy Efficiency Rating:

EPC Environmental Impact Rating:



Entrance Porch

7' 10" x 3' 4" (2.39m x 1.02m)

Hallway

7' 3" x 15' 11" (2.21m x 4.85m)

Living Room

14' 9" x 15' 10" (4.50m x 4.83m)

Dining Room

12' 3" x 11' 9" (3.73m x 3.58m)

Kitchen

9' 9" x 11' 8" (2.97m x 3.56m)

Utility Room

4' 7" x 13' 0" (1.40m x 3.96m)

Wc

3' 11" x 2' 10" (1.19m x 0.86m)

Landing

4' 10" x 10' 2" (1.47m x 3.10m)

Bedroom 1

11' 10" x 15' 9" (3.61m x 4.80m)

Bedroom 2

12' 6" x 11' 11" (3.81m x 3.63m)

Bedroom 3

8' 3" x 8' 11" (2.51m x 2.72m)

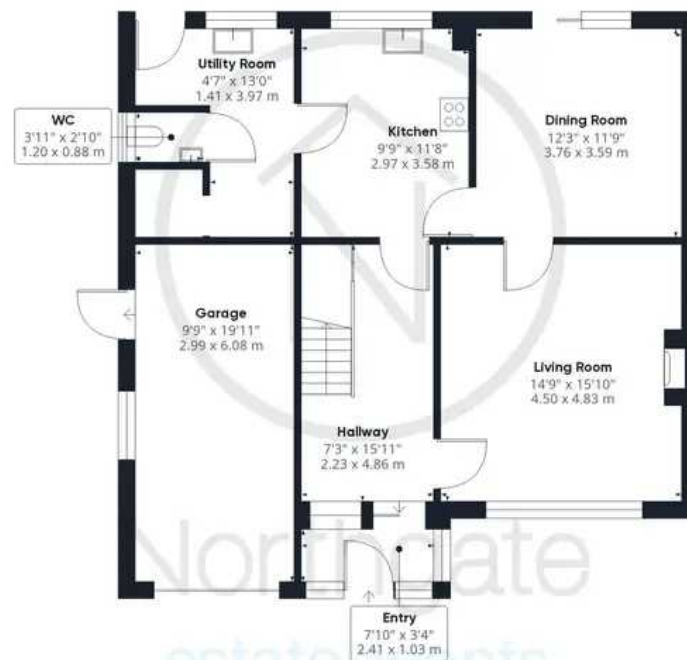
Bathroom

9' 8" x 8' 3" (2.95m x 2.51m)





Northgate
estate agents

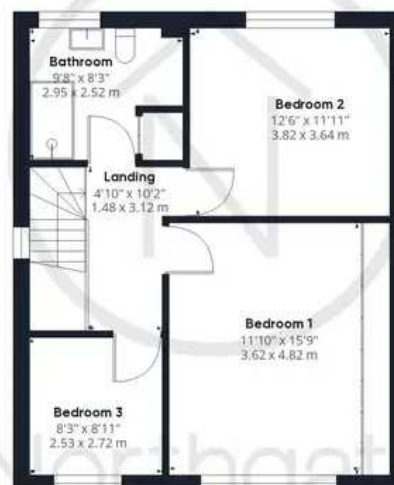


Ground Floor

Approximate total area⁰

1552.45 ft²

144.23 m²



Floor 2

Excluding balconies and terraces

While every attempt has been made to ensure accuracy, all measurements are approximate, not to scale. This floor plan is for illustrative purposes only.

GIRAFFE360



