



Zetland Hunt, Newton Aycliffe

Offers in Region of £150,000



27 Zetland Hunt

Newton Aycliffe, Newton Aycliffe

Introducing this immaculate three-bedroom semi-detached house, nestled in a sought-after area and just a stones throw from the award winning Byerley Park Primary School. Boasting a spacious and versatile layout, this home offers plenty for a potential buyer.

Council Tax band: B

Tenure: Freehold

EPC Energy Efficiency Rating: E

EPC Environmental Impact Rating: E



Porch

3' 8" x 5' 1" (1.12m x 1.55m)

Hallway

3' 9" x 4' 4" (1.14m x 1.32m)

Living/Dining Room

22' 11" x 12' 11" (6.99m x 3.94m)

Kitchen

9' 9" x 7' 11" (2.97m x 2.41m)

Utility

5' 7" x 8' 5" (1.70m x 2.57m)

Garage

16' 1" x 8' 2" (4.90m x 2.49m)

Landing

8' 9" x 6' 1" (2.67m x 1.85m)

Bedroom 1

11' 0" x 9' 0" (3.35m x 2.74m)

Bedroom 2

9' 1" x 9' 10" (2.77m x 3.00m)

Bedroom 3

7' 3" x 7' 0" (2.21m x 2.13m)

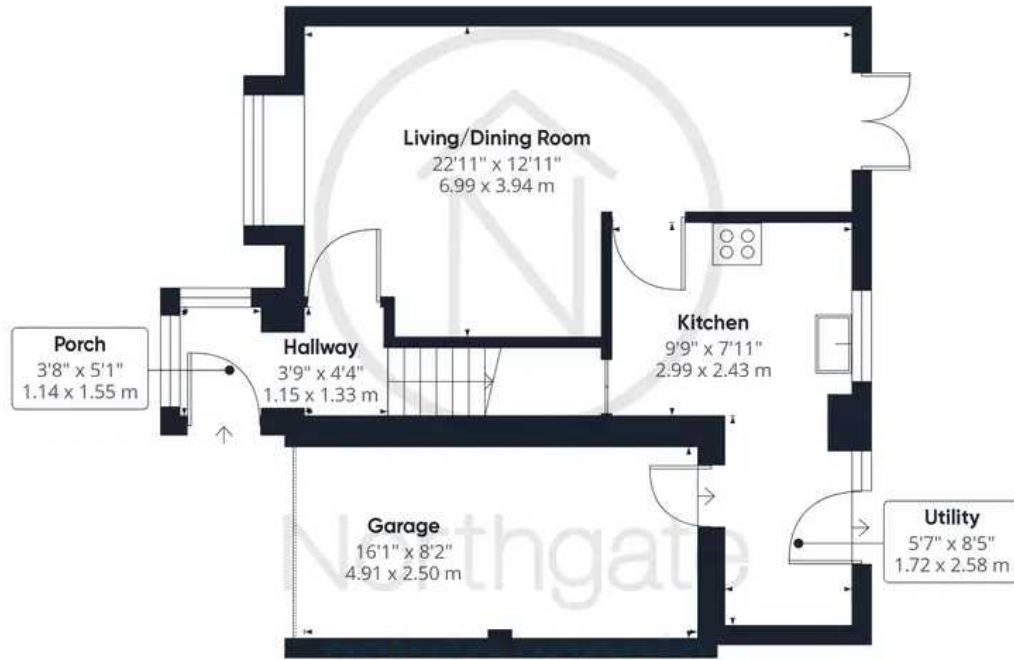
Bathroom

6' 0" x 6' 1" (1.83m x 1.85m)





Northgate
estate agents



Ground Floor

Approximate total area⁰

932.24 ft²

86.61 m²



Floor 1

Excluding balconies and terraces

While every attempt has been made to ensure accuracy, all measurements are approximate, not to scale. This floor plan is for illustrative purposes only.

GIRAFFE360



