



Bluebell Close, Newton Aycliffe
Newton Aycliffe



Offers in Region of £100,000



82 Bluebell Close

Newton Aycliffe, Newton Aycliffe

This three-bedroom mid-link home offers spacious and versatile living accommodation, perfect for families or first-time buyers.

The ground floor features an entrance hallway with cloakroom/WC, a spacious living room, and a fitted kitchen/dining room.

To the first floor, there are three generously sized bedrooms, along with a family bathroom/WC.

Externally, the property boasts an enclosed rear garden, ideal for outdoor relaxation. Parking is available nearby, providing convenience for residents and visitors alike.

Situated in a popular and convenient location, the property is close to local amenities, schools, and transport links, making it an excellent choice for a variety of buyers.

Please note: Some rooms have had furniture virtually removed for illustrative purposes.

Council Tax band: A

Tenure: Freehold

- 3 bedroom mid-link property
- Fitted kitchen/dining room
- Ground floor WC
- Enclosed rear garden
- Ideal first / family home
- Energy Performance Certificate: TBC



Entrance

2'7" × 6'10" (0.81 × 2.10 m)

Hallway

5'8" × 3'8" (1.74 × 1.12 m) 15'6" × 6'1" (4.75 × 1.87 m)

WC

5'8" × 2'10" (1.74 × 0.88 m)

Kitchen/Diner

9'5" × 14'2" (2.87 × 4.34 m)

Lounge

11'8" × 15'1" (3.56 × 4.61 m)

Storage

3'10" × 6'11" (1.18 × 2.13 m)

Landing

6'4" × 6'11" (1.95 × 2.12 m)

Bedroom 1

11'11" × 11'9" (3.64 × 3.60 m)

Bedroom 2

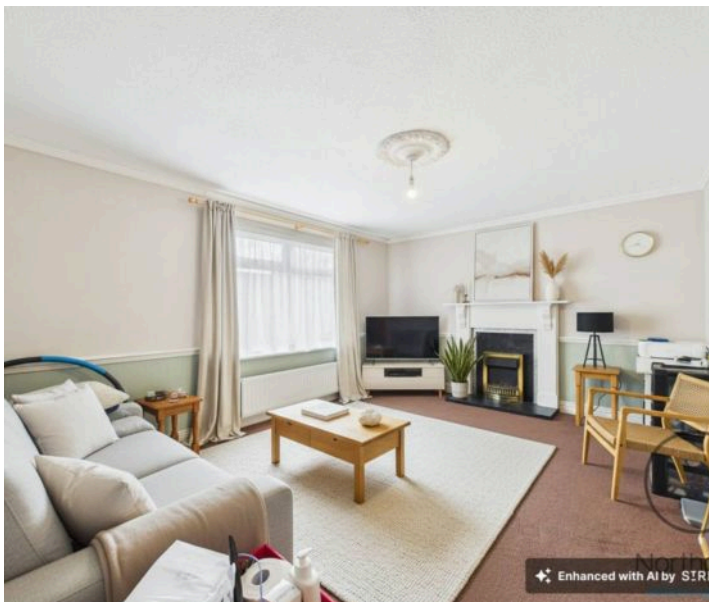
9'4" × 11'9" (2.87 × 3.59 m)

Bedroom 3

8'4" × 9'6" (2.56 × 2.91 m)

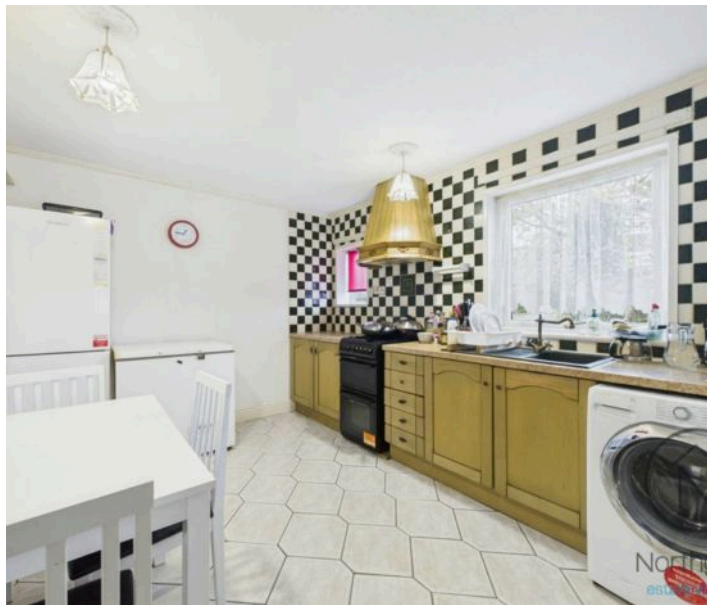
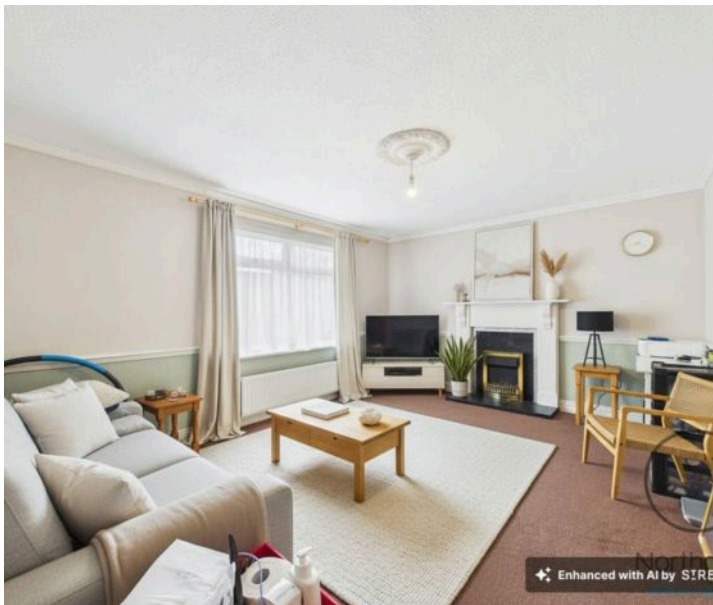
Bathroom

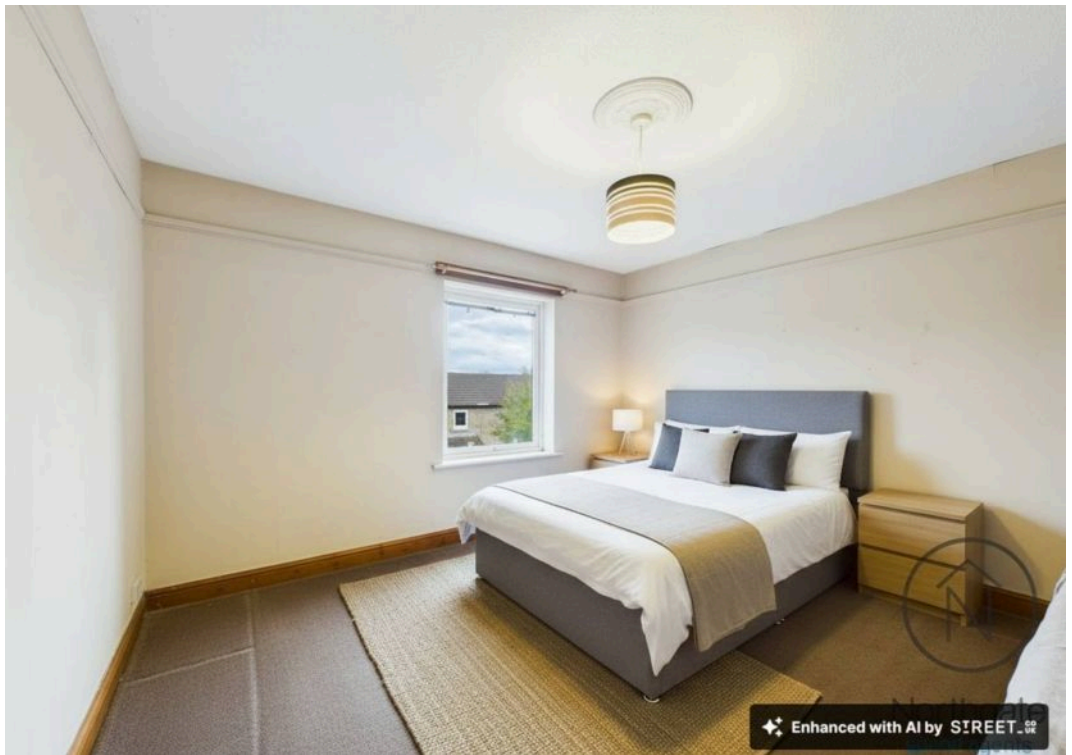
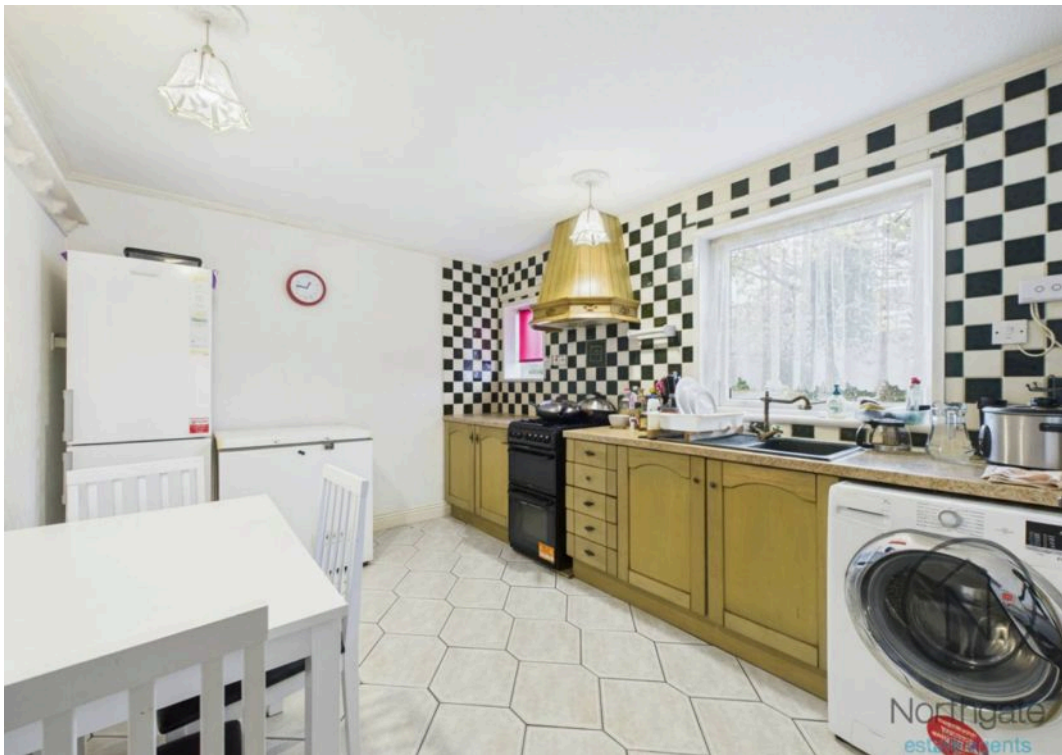
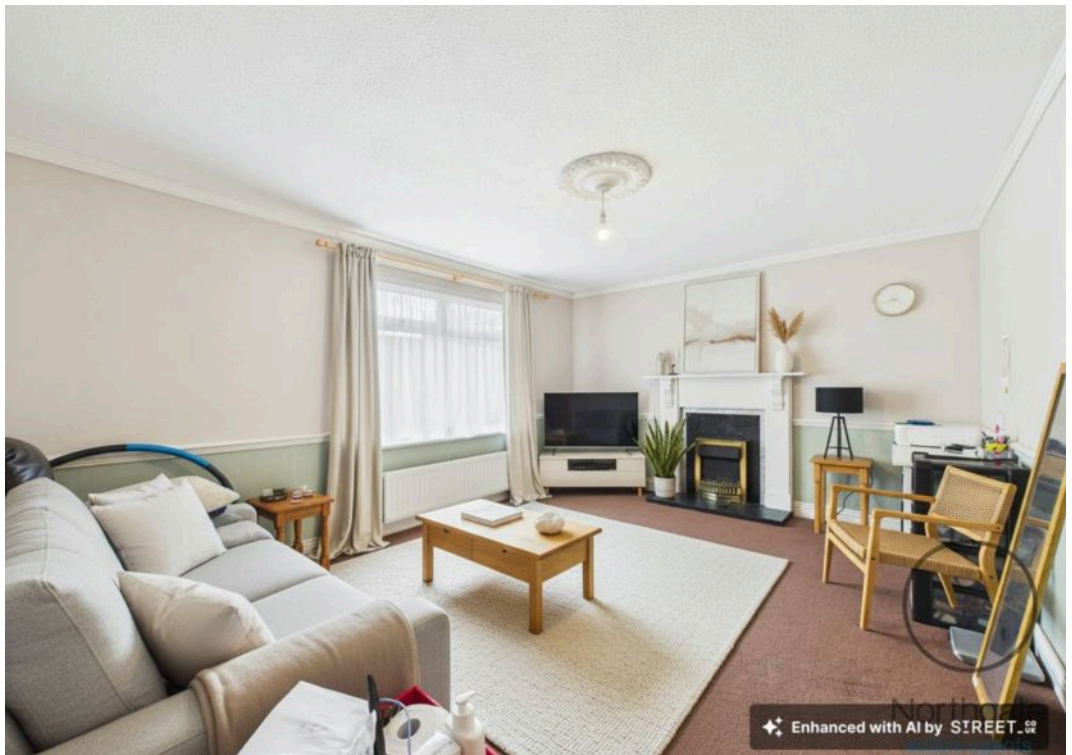
6'1" × 6'10" (1.86 × 2.09 m)

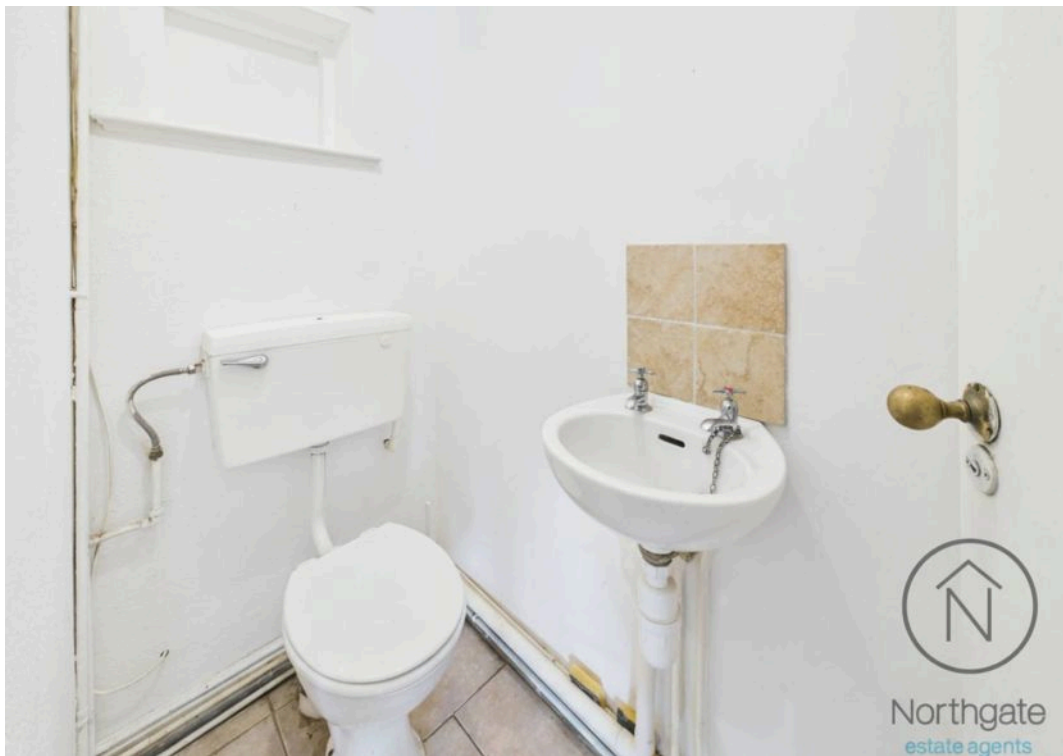
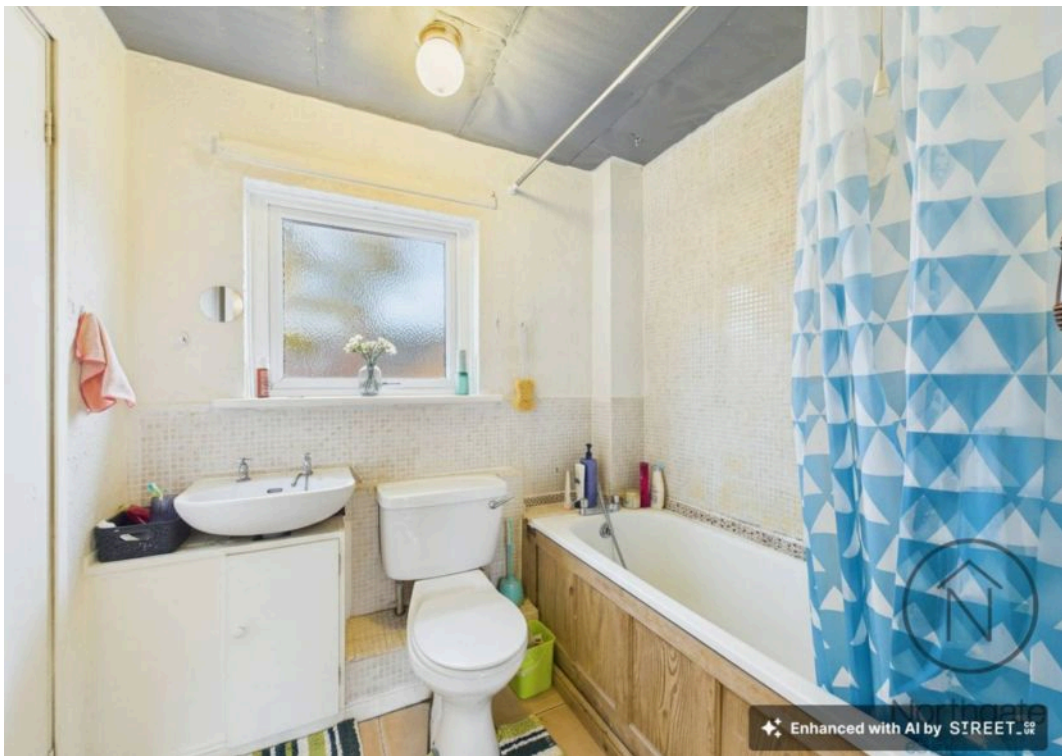




REAR GARDEN

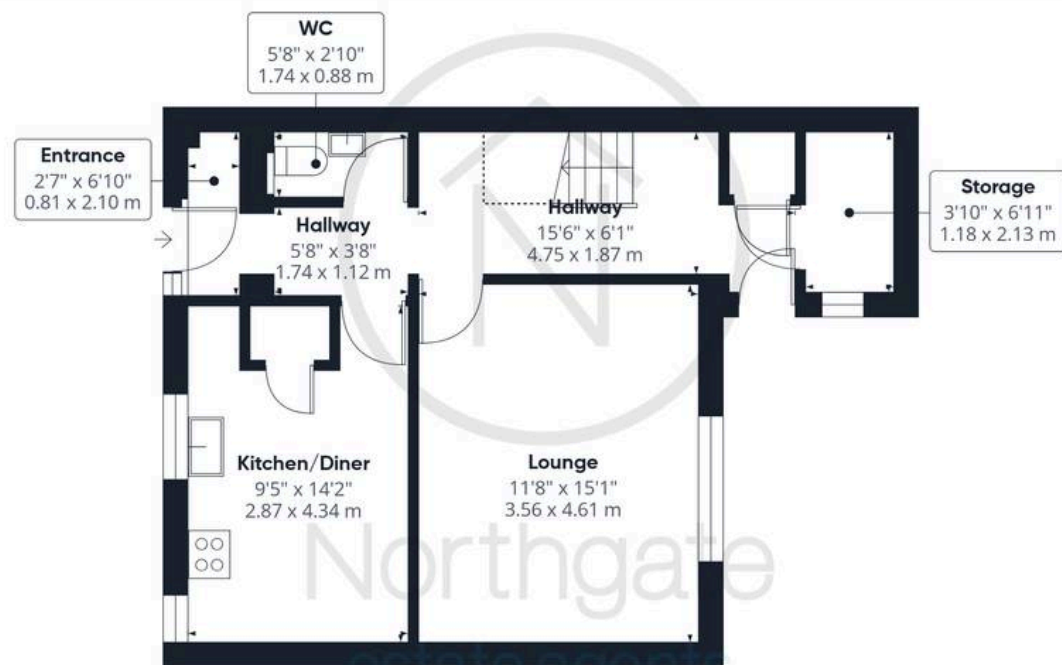




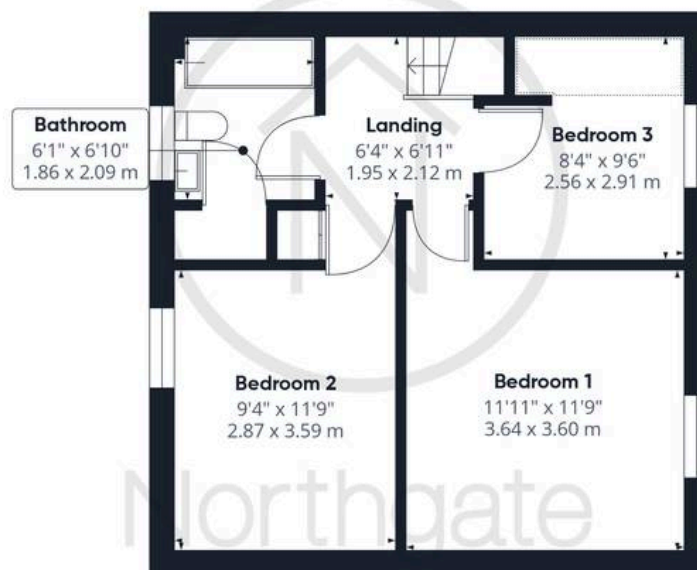




Northgate
estate agents



Ground Floor



Floor 1

Approximate total area⁽¹⁾

904 ft²

83.9 m²

Reduced headroom

10 ft²

0.9 m²

(1) Excluding balconies and terraces

Reduced headroom

Below 5 ft/1.5 m

Calculations reference the RICS IPMS 3C standard. Measurements are approximate and not to scale. This floor plan is intended for illustration only.

GIRAFFE360



Northgate - County Durham

Suite 3, Avenue House, Greenwell Road, Newton Aycliffe - DL5 4DH

01325 728333 • info@northgates.net • www.northgates.co.uk/



These particulars do not constitute, nor constitute part of, an offer or contract. No warranties are provided. Verify details through inspection. Northgate estate agents, nor any person in their employment has any authority to make or give any representation or warranty whatever in the relation to this property. All measurements are approximate.