



7 Hardwick Court, Newton Aycliffe
Newton Aycliffe



Offers in Region of £170,000



7 Hardwick Court

Newton Aycliffe, Newton Aycliffe

This well presented three-bedroom semi-detached property is situated on a quiet cul-de-sac, making it an ideal family home. It offers plenty of off-street parking, a detached single garage, and a beautifully landscaped rear garden that is perfect for entertaining and everyday family life.

The ground floor begins with an entrance porch, leading through sliding doors into a well-proportioned modern kitchen/diner. From here, there is access to the lounge, which flows into a bright conservatory. French doors open directly onto the rear garden, an enclosed outdoor space mainly laid to lawn with decorative raised beds, a decked patio, and an additional raised decking area with pergola, providing excellent space for relaxing or socialising.

Upstairs, there are three bedrooms, with the main bedroom to the front benefiting from mirrored fitted wardrobes. A family bathroom with a modern three-piece suite and shower over the bath completes the first floor.

With generous living accommodation, well-presented interiors, and a wonderful garden, this home is ready to move into and enjoy.

Council Tax band: B

Tenure: Freehold

- Modern Kitchen/Diner
- Conservatory
- Beautiful Well Maintained Rear Garden
- Quiet Cul-de-sac Location in Woodham Village
- Single Garage / Parking
- Energy Performance Certificate: C



Porch

7'1" × 2'11" (2.16 × 0.90 m)

Kitchen/Diner

14'11" × 14'4" (4.55 × 4.39 m)

Lounge

14'11" × 10'11" (4.55 × 3.33 m)

Conservatory

10'6" × 8'11" (3.20 × 2.73 m)

Landing

6'3" × 9'0" (1.90 × 2.75 m)

Bedroom 1

9'10" × 10'11" (3.02 × 3.33 m)

Bedroom 2

8'6" × 10'10" (2.59 × 3.32 m)

Bedroom 3

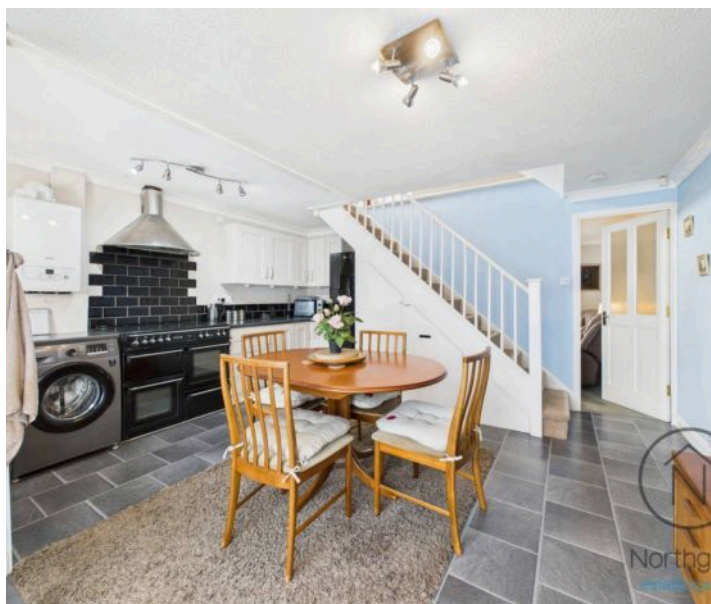
6'4" × 7'11" (1.93 × 2.42 m)

Bathroom

4'11" × 7'5" (1.50 × 2.25 m)

Garage

9'10" × 20'10" (3.00 × 6.36 m)





FRONT GARDEN

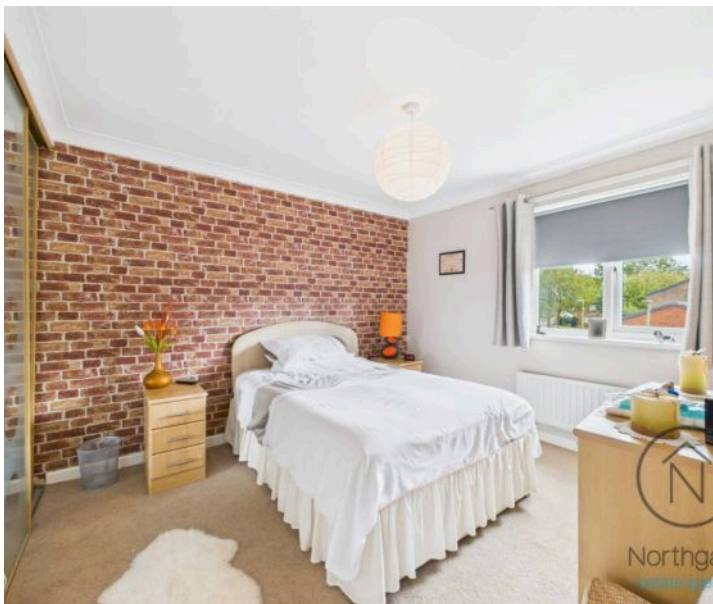
REAR GARDEN

GARAGE

Single Garage

DRIVEWAY

3 Parking Spaces







Northgate
estate agents

Ground Floor Building 1



Northgate
estate agents

Floor 1 Building 1



Northgate
estate agents

Ground Floor Building 2



Northgate
estate agents

Approximate total area⁽¹⁾

1063 ft²

98.5 m²

(1) Excluding balconies and terraces

Calculations reference the RICS IPMS 3C standard. Measurements are approximate and not to scale. This floor plan is intended for illustration only.

GIRAFFE360



Northgate - County Durham

Suite 3, Avenue House, Greenwell Road, Newton Aycliffe - DL5 4DH

01325 728333 • info@northgates.net • www.northgates.co.uk/



These particulars do not constitute, nor constitute part of, an offer or contract. No warranties are provided. Verify details through inspection. Northgate estate agents, nor any person in their employment has any authority to make or give any representation or warranty whatever in the relation to this property. All measurements are approximate.