



Encombe Terrace, Ferryhill  
Ferryhill



In Excess of £70,000





## 8 Encombe Terrace

Ferryhill, Ferryhill

### **Spacious 3-Bedroom Mid-Terrace – Popular Ferryhill Location**

We are delighted to welcome to the market this spacious three-bedroom mid-terrace property, offering generous accommodation in a well-connected area. Situated in the popular village of Ferryhill, the home is close to a range of local amenities, a nearby primary school, and excellent transport links including easy access to the A1.

The ground floor comprises a welcoming entrance hall, a comfortable lounge, a separate dining room, a fitted kitchen, and a ground floor bathroom—ideal for busy households or guests.

To the first floor, there are three well-proportioned bedrooms with access to the boarded attic, offering flexible additional space for storage, hobbies, or occasional use.

Externally, the property benefits from low-maintenance yards to both the front and rear.

This well-located home presents a fantastic opportunity for first-time buyers, families, or investors. Early viewing is strongly recommended.

Council Tax band: A

Tenure: Freehold





#### Vestibule

3'10" x 2'11" (1.17m x 0.90m)

#### Hallway

10'1" x 3'0" (3.08m x 0.92m)

#### Lounge

11'4" x 11'6" (3.46m x 3.51m)

#### Dining Room

11'3" x 15'1" (3.44m x 4.61m)

#### Kitchen

11'7" x 9'6" (3.55m x 2.90m)

#### Hallway

2'9" x 7'1" (0.84m x 2.16m)

#### Bathroom

5'10" x 7'1" (1.80m x 2.16m)

#### Landing

2'9" x 8'10" (0.86m x 2.71m)

#### Bedroom 1

11'3" x 15'2" (3.44m x 4.63m)

#### Bedroom 2

8'6" x 9'2" (2.61m x 2.80m)

#### Bedroom 3

4'6" x 5'9" (1.44m x 1.74m)

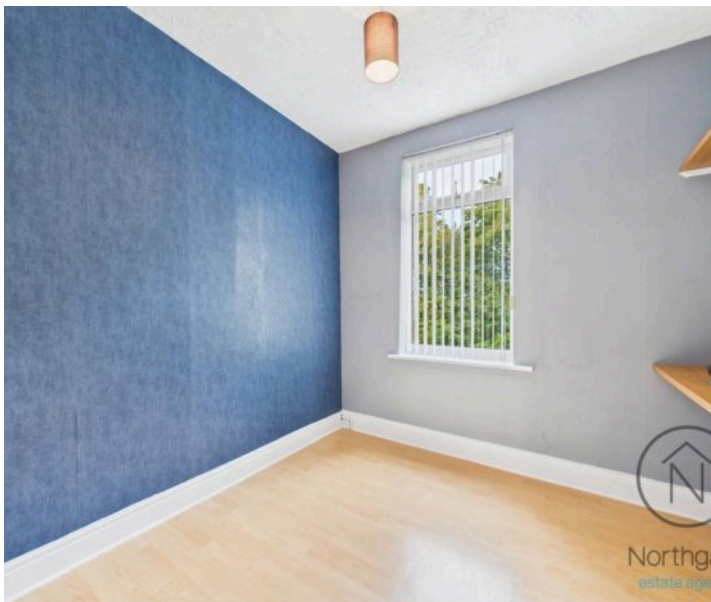
#### Attic

12'9" x 14'11" (3.89m x 4.57m)

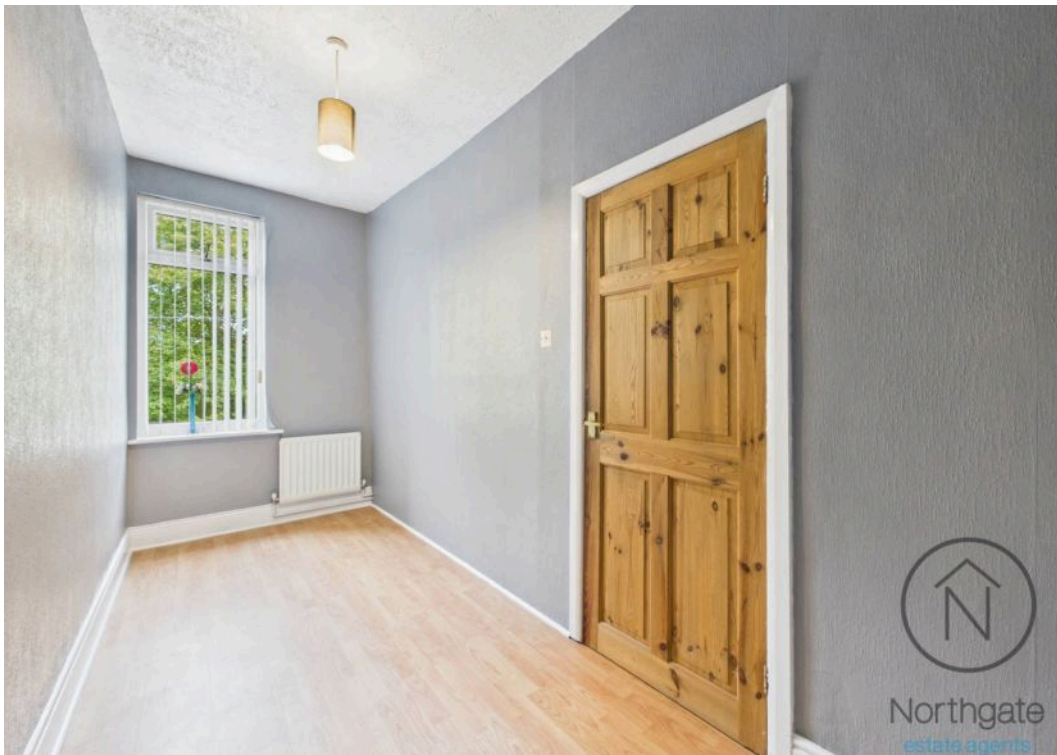


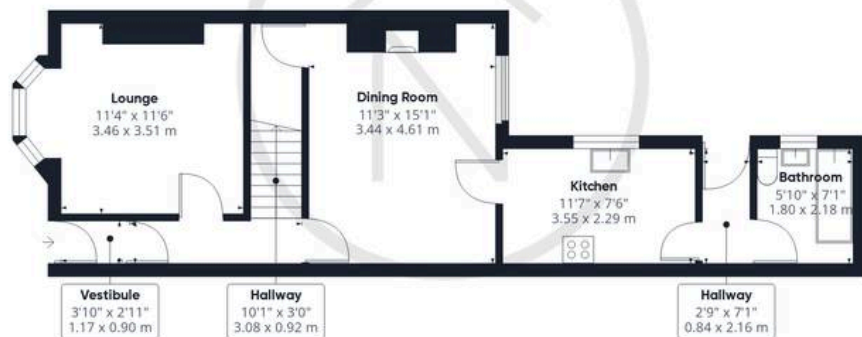


- Three Bedrooms
- Lounge / Dining Room
- Fitted Kitchen
- Refurbished Bathroom
- Enclosed Rear Yard
- Energy Performance Certificate: TBC









Northgate  
estate agents

Ground Floor



Northgate  
estate agents

Floor 1



Northgate  
estate agents

Floor 2

**Approximate total area<sup>(1)</sup>**

1048 ft<sup>2</sup>

97.4 m<sup>2</sup>

**Reduced headroom**

50 ft<sup>2</sup>

4.7 m<sup>2</sup>

(1) Excluding balconies and terraces

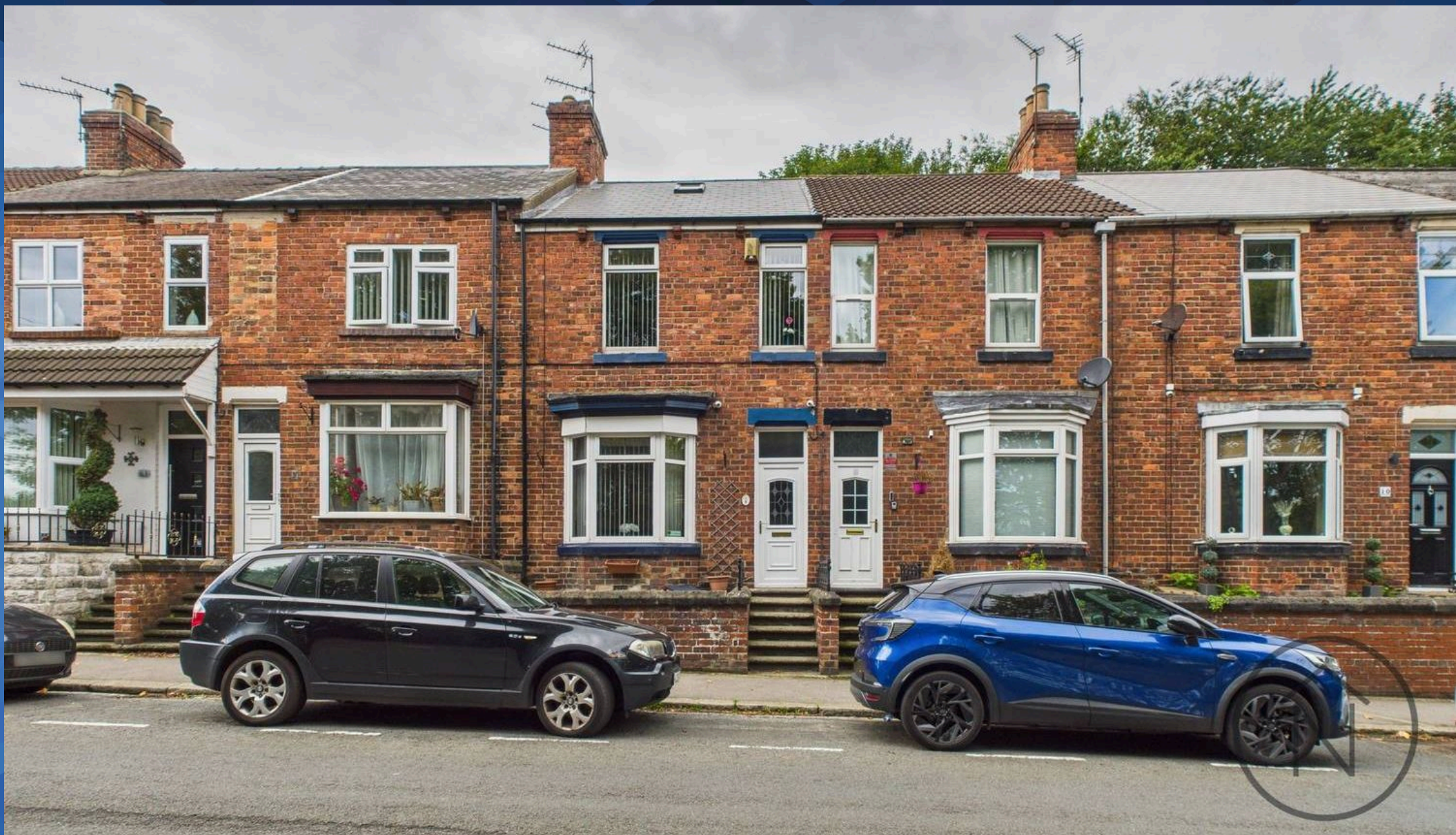
Reduced headroom

Below 5 ft/1.5 m

Calculations reference the RICS IPMS 3C standard. Measurements are approximate and not to scale. This floor plan is intended for illustration only.

GIRAFFE360





## Northgate - County Durham

Suite 3, Avenue House, Greenwell Road, Newton Aycliffe - DL5 4DH

01325 728333 • [info@northgates.net](mailto:info@northgates.net) • [www.northgates.co.uk/](http://www.northgates.co.uk/)



These particulars do not constitute, nor constitute part of, an offer or contract. No warranties are provided. Verify details through inspection. Northgate estate agents, nor any person in their employment has any authority to make or give any representation or warranty whatever in the relation to this property. All measurements are approximate.