



Flat 1, Westpoint Northumberland Street, Darlington  
Darlington



Offers Over £150,000





## Flat 1

Westpoint Northumberland Street, Darlington

Located just a short stroll from Darlington town centre and moments from Coniscliffe Road, this well-presented apartment offers easy access to a range of local amenities including wine bars, restaurants, boutique shops, and cafés, along with excellent transport links.

Set within a secure gated development, the complex benefits from a well-maintained communal entrance with an intercom entry system, offering added privacy and peace of mind.

Ideal for professionals, first-time buyers, or investors, this modern apartment is situated in a highly desirable location.

The accommodation briefly comprises: lounge, modern kitchen/diner, stairs leading down to two double bedrooms, En-suite and a family bathroom.

Council Tax band: D

Tenure: Leasehold

- No Chain - 2 Bedroom Duplex Apartment
- Two Double Bedrooms
- Modern Fitted Kitchen / Diner
- En-suite / Family Bathroom
- Secured Gated Access / Allocated Parking
- Energy Performance Certificate: TBC

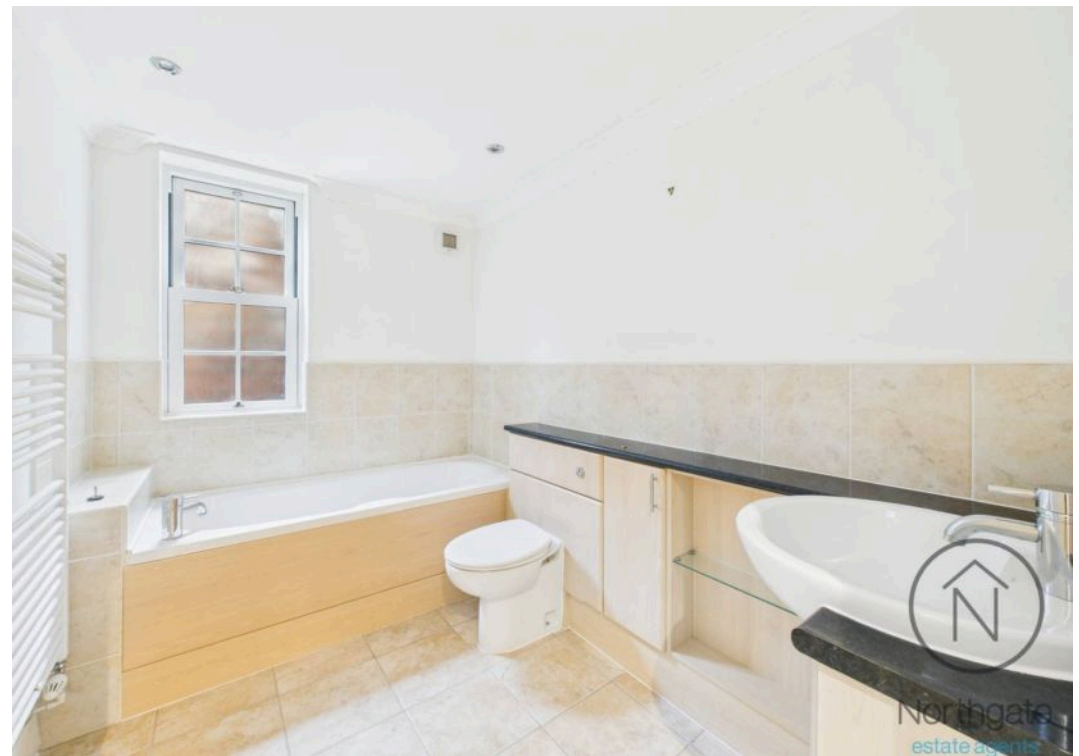
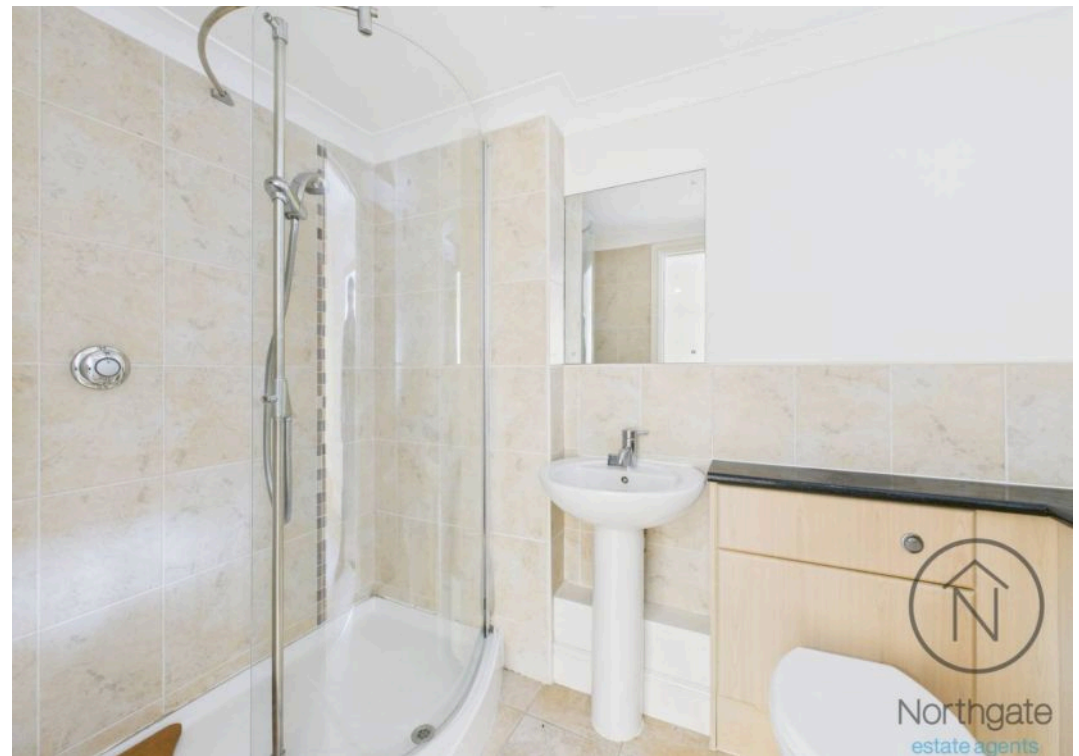


## ALLOCATED PARKING

1 Parking Space









Northgate  
estate agents

Approximate total area<sup>(1)</sup>

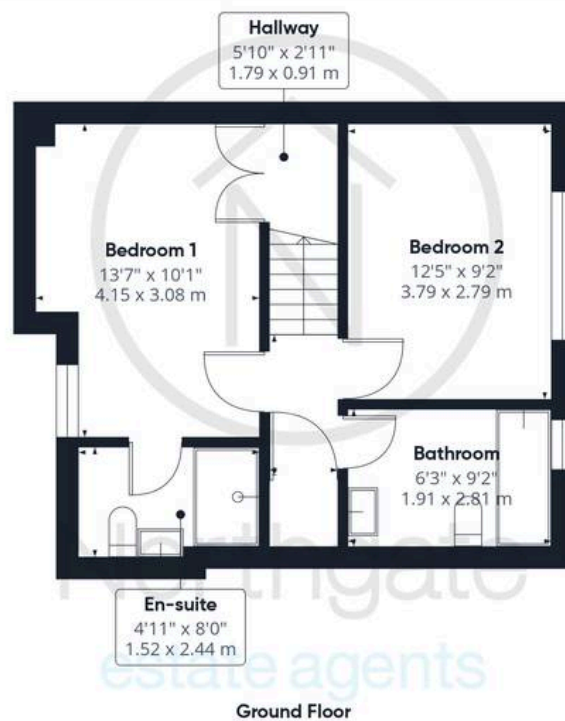
716 ft<sup>2</sup>

66.5 m<sup>2</sup>

(1) Excluding balconies and terraces

Calculations reference the RICS IPMS 3C standard. Measurements are approximate and not to scale. This floor plan is intended for illustration only.

GIRAFFE360







## Northgate - County Durham

Suite 3, Avenue House, Greenwell Road, Newton Aycliffe - DL5 4DH

01325 728333 • [info@northgates.net](mailto:info@northgates.net) • [www.northgates.co.uk/](http://www.northgates.co.uk/)



These particulars do not constitute, nor constitute part of, an offer or contract. No warranties are provided. Verify details through inspection. Northgate estate agents, nor any person in their employment has any authority to make or give any representation or warranty whatever in the relation to this property. All measurements are approximate.