



24 Clarence Green, Newton Aycliffe
Newton Aycliffe



In Excess of £115,000



24 Clarence Green

Newton Aycliffe, Newton Aycliffe

Charming Three-Bedroom Mid-Terraced Home in Quiet Residential Area

Situated in a peaceful part of Newton Aycliffe, this well-presented three-bedroom mid-terraced property offers a fantastic opportunity for families or first-time buyers seeking comfort, space, and convenience.

Upon entry, you're welcomed into a spacious lounge/dining room—ideal for both everyday living and entertaining. The open-plan layout enhances natural light and flow throughout the ground floor. The adjacent kitchen is complemented by a separate utility area and a practical downstairs WC, ensuring functionality for modern family life.

Upstairs, the home features three generously sized bedrooms, each filled with natural light and offering a cosy, neutral décor. A family bathroom and additional WC complete the upper floor.

Externally, the property benefits from low-maintenance gardens to both the front and rear, providing a quiet outdoor space for relaxation or entertaining.

This inviting home offers spacious interiors, practical features, and a quiet location—making it a smart choice for a wide range of buyers

Council Tax band: A

Tenure: Freehold

- Three Bedroom Terraced with Detached Garage
- Lounge / Dining Room
- Kitchen / Utility Room / Wc
- Three Spacious Bedrooms
- Wc / Bathroom



Entrance Hallway

8'11" × 5'6" (2.73 × 1.69 m)

Lounge

9'11" × 16'11" (3.03 × 5.17 m)

Dining Room

10'6" × 10'0" (3.20 × 3.06 m)

Kitchen

10'5" × 9'6" (3.18 × 2.90 m)

Hallway

8'11" × 5'6" (2.73 × 1.69 m)

Utility Room

6'11" × 5'5" (2.13 × 1.67 m)

Landing

10'6" × 5'3" (3.20 × 1.61 m)

Bedroom 1

9'11" × 12'8" (3.04 × 3.88 m)

Bedroom 2

10'7" × 9'9" (3.23 × 2.97 m)

Bedroom 3

9'9" × 7'11" (3.00 × 2.43 m)

Wc

4'8" × 2'9" (1.43 × 0.84 m)

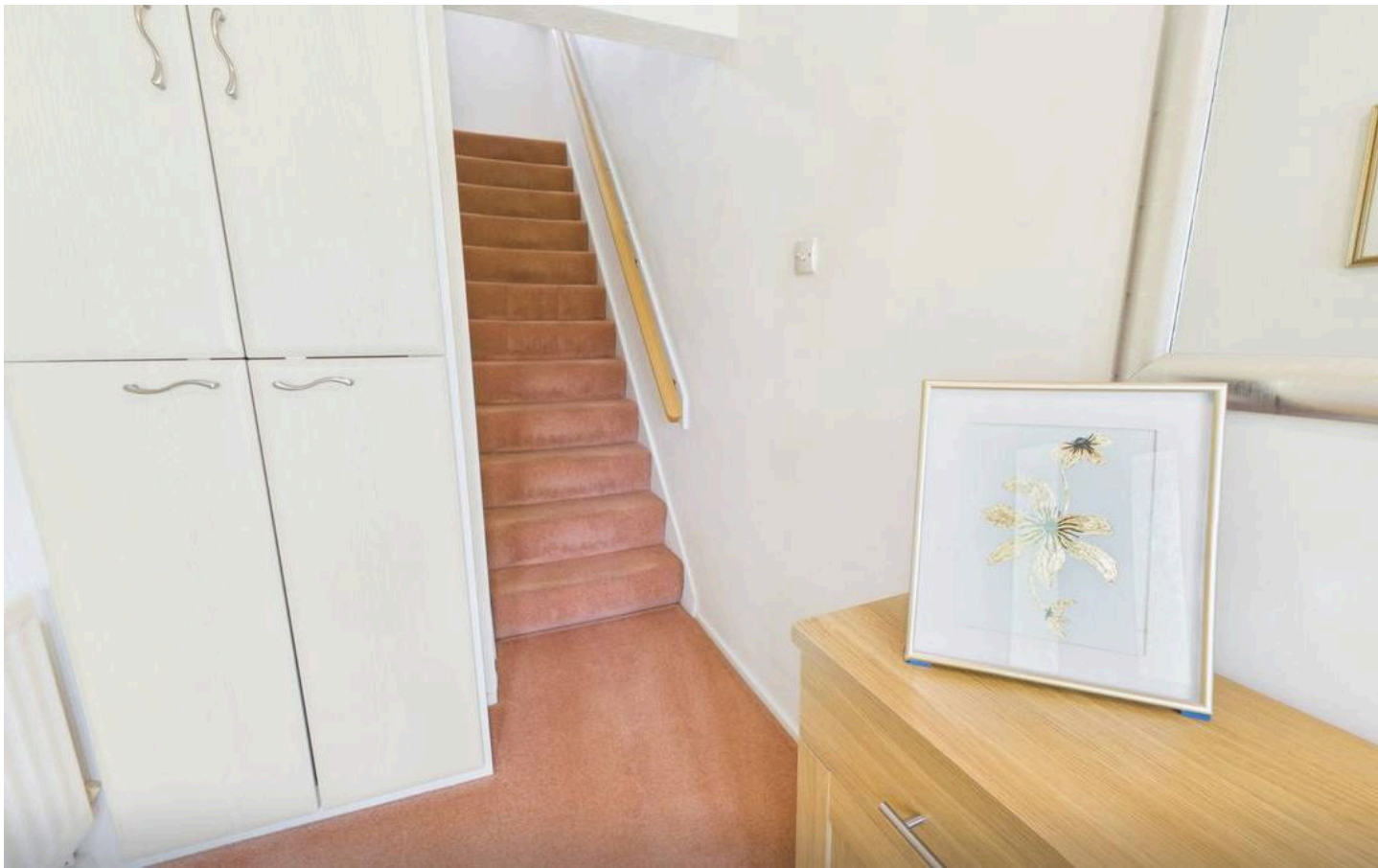
Bathroom

6'6" × 4'5" (2.00 × 1.35 m)

Garage

17'6" × 8'2" (5.35 × 2.50 m)





FRONT GARDEN

REAR GARDEN

GARAGE

Single Garage

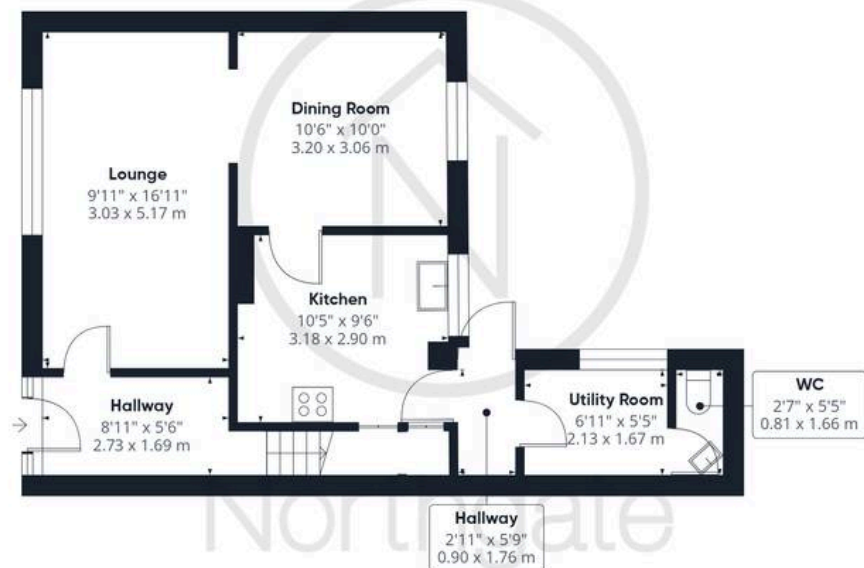








Northgate
estate agents



Ground Floor Building 1



Floor 1 Building 1



Ground Floor Building 2

Approximate total area⁽¹⁾

1109 ft²

103.2 m²

(1) Excluding balconies and terraces

Calculations reference the RICS IPMS 3C standard. Measurements are approximate and not to scale. This floor plan is intended for illustration only.

GIRAFFE360



Northgate - County Durham

Northgate Estate Agents, Suite 3 - DL5 4DH

01325 728333 • info@northgates.net • www.northgates.co.uk/



These particulars do not constitute, nor constitute part of, an offer or contract. No warranties are provided. Verify details through inspection. Northgate estate agents, nor any person in their employment has any authority to make or give any representation or warranty whatever in the relation to this property. All measurements are approximate.