



21 Westerhope Court, Darlington  
Darlington



In Excess of £170,000





## 21 Westerhope Court

Darlington, Darlington

Welcome to this immaculately presented three-bedroom semi-detached home with garage, set in a peaceful cul-de-sac in Faverdale. Offering a modern fitted kitchen and generous living spaces, this property is ideal for families seeking both comfort and convenience.

The home features a spacious living room and a bright kitchen/diner, perfect for everyday living and entertaining. Upstairs, there are three well-proportioned bedrooms and a modern family bathroom. A separate garage provides secure parking or additional storage and driveway parking.

Nestled in a tranquil setting, yet conveniently close to local amenities, schools, and transport links, this home offers the best of both worlds – a peaceful retreat with everyday essentials within easy reach.

Council Tax band: B

Tenure: Freehold

- 3 Bedroom Semi Detached with Garage
- Modern Fitted Kitchen
- Immaculately Presented Throughout
- Spacious Living Accommodation
- Cul De Sac Location Of Faverdale - Close Proximity To Local Amenities & Schools
- Energy Performance Certificate: D



#### Porch

3'3" × 4'10" (1.01 × 1.47 m)

#### Lounge

11'3" × 14'2" (3.45 × 4.32 m)

#### kitchen/Diner

11'9" × 14'2" (3.59 × 4.34 m)

#### Landing

8'9" × 3'11" (2.67 × 1.20 m)

#### Bedroom 1

10'5" × 8'3" (3.19 × 2.54 m)

#### Bedroom 2

8'7" × 7'5" (2.62 × 2.28 m)

#### Bedroom 3

8'9" × 5'9" (2.69 × 1.75 m)

#### Bathroom

5'5" × 6'4" (1.67 × 1.95 m)

#### Garage

17'0" × 8'0" (5.19 × 2.44 m)







**FRONT GARDEN**

**REAR GARDEN**

**GARAGE**

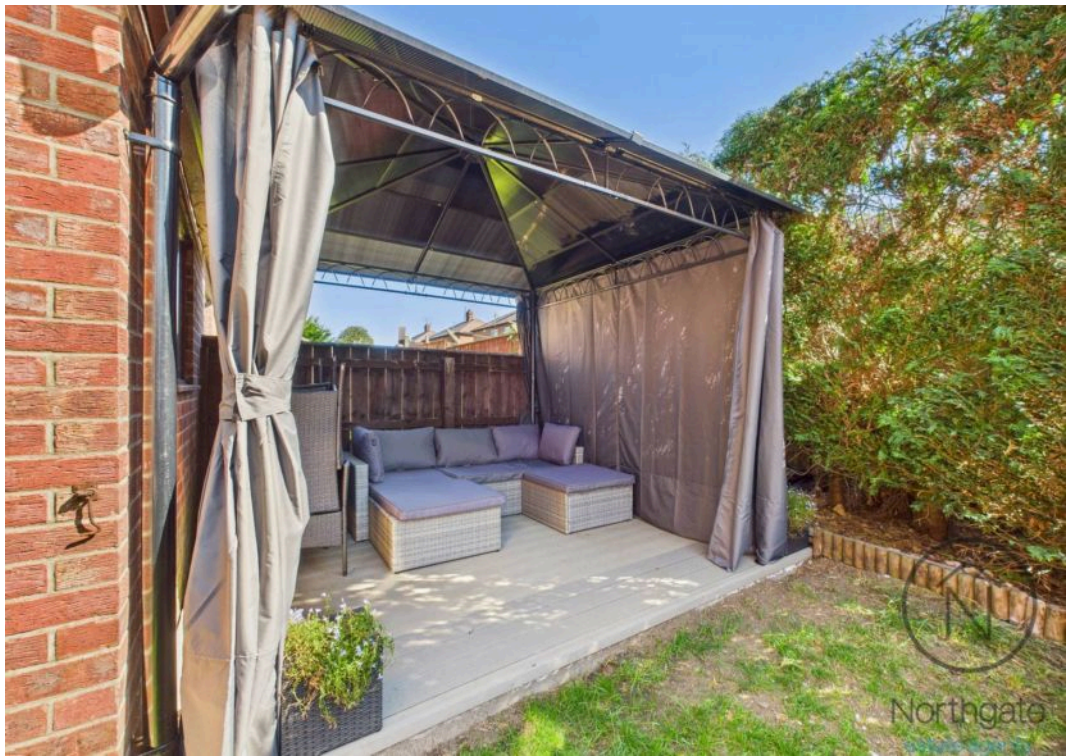
Single Garage

**DRIVEWAY**

2 Parking Spaces







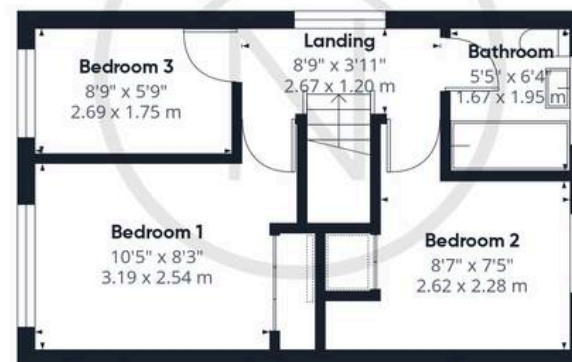




Northgate  
estate agents



Ground Floor Building 1



Floor 1 Building 1



Ground Floor Building 2

Approximate total area<sup>(1)</sup>

783 ft<sup>2</sup>

72.7 m<sup>2</sup>

(1) Excluding balconies and terraces

Calculations reference the RICS IPMS 3C standard. Measurements are approximate and not to scale. This floor plan is intended for illustration only.

GIRAFFE360





## Northgate - County Durham

Northgate Estate Agents, Suite 3 - DL5 4DH

01325 728333 • [info@northgates.net](mailto:info@northgates.net) • [www.northgates.co.uk/](http://www.northgates.co.uk/)



These particulars do not constitute, nor constitute part of, an offer or contract. No warranties are provided. Verify details through inspection. Northgate estate agents, nor any person in their employment has any authority to make or give any representation or warranty whatever in the relation to this property. All measurements are approximate.