



Carlton Avenue
Wolviston Court, Billingham



Offers In Excess of £160,000



Carlton Avenue

Wolviston Court, Billingham

Welcome to this cosy two-bedroom semi-detached bungalow on Wolviston Court in Billingham, offering a laid-back lifestyle overlooking Carlton Green. This charming property is perfect for those looking to downsize or start a new chapter without the hassle of an onward chain.

Step inside to find a welcoming entrance hall leading to a comfortable lounge, a well-equipped kitchen, and a sunny conservatory ideal for relaxing or entertaining guests. The accommodation also includes a bathroom and two bedrooms providing a peaceful retreat at the end of the day.

Outside, you'll find a low-maintenance garden to the rear. Plus, there's a handy driveway and garage for parking convenience. With UPVC double glazing and gas central heating, you can be sure of a warm and energy-efficient home all year round. Don't miss out on this fantastic opportunity to make this bungalow your own!

While we have made efforts to ensure the accuracy of the information provided in our sales particulars, please note that we have gathered this information from the seller. Should you require further details or clarification on any specific matter, we kindly request you to contact our office where we are ready to gather evidence or conduct further investigations on your behalf.

It is important to note that Northgate has not tested any of the services, appliances, or equipment within this property. Therefore, we strongly recommend that prospective buyers arrange for their independent surveys or service reports before finalising the purchase of the property.

Council Tax band: B

Tenure: Freehold



Entrance Hall

Lounge

15' 1" x 11' 11" (4.59m x 3.63m)

Kitchen

8' 4" x 10' 11" (2.54m x 3.32m)

Conservatory

7' 8" x 8' 5" (2.33m x 2.56m)

Bathroom

4' 7" x 7' 11" (1.40m x 2.41m)

Bedroom One

11' 9" x 10' 10" (3.58m x 3.31m)

Bedroom Two

11' 3" x 9' 10" (3.44m x 3.00m)

Garden

Garage

Single Garage

Driveway

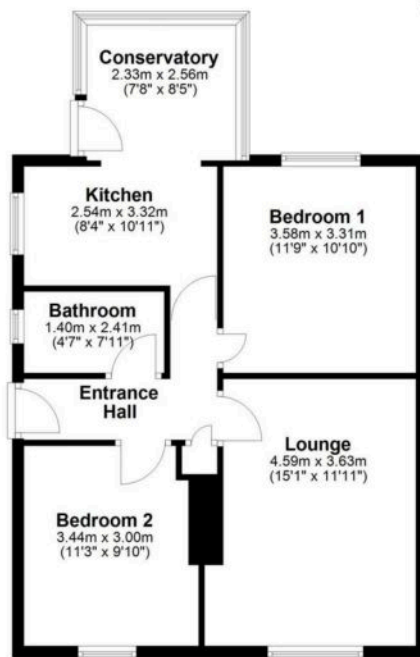
2 Parking Spaces







Ground Floor
Approx. 60.9 sq. metres (655.0 sq. feet)



Total area: approx. 60.9 sq. metres (655.0 sq. feet)



Northgate - Teesside

8 Town Square, Billingham - TS23 2LY

01642 813222

billingham@northgates.net

www.northgates.co.uk/

While we have made efforts to ensure the accuracy of the information provided in our sales particulars, please note that we have gathered this information from the seller. Should you require further details or clarification on any specific matter, we kindly request you to contact our office where we are ready to gather evidence or conduct further investigations on your behalf. It is important to note that Northgate has not tested any of the services, appliances, or equipment within this property. Therefore, we strongly recommend that prospective buyers arrange for their independent surveys or service reports before finalising the purchase of the property.