



59 Hawkshead Place, Newton Aycliffe
Newton Aycliffe



Offers in Region of £80,000



59 Hawkshead Place

Newton Aycliffe, Newton Aycliffe

Stylish & Spacious 2-Bedroom Second Floor Apartment

A fantastic opportunity to acquire this beautifully presented and modern 2-bedroom apartment.

Set within a popular residential development, this second-floor home offers a bright and airy open-plan living and dining area, with patio doors opening onto a charming Juliette balcony. The contemporary kitchen is thoughtfully designed and flows seamlessly into the living space – ideal for both everyday living and entertaining.

Both bedrooms are generously proportioned, complemented by a sleek, modern bathroom. The apartment is tastefully decorated in neutral tones throughout, providing a fresh, move-in-ready feel with plenty of scope to make it your own.

Conveniently located close to local shops, reputable schools, and excellent transport links, this property strikes the perfect balance between style, comfort, and convenience.

Council Tax band: A

Tenure: Leasehold

- Two Bedroom Apartment
- Lounge/dining room with "Juliet" balcony
- Modern Fitted Kitchen / Bathroom
- Allocated Parking Space
- Close to train station, local shops and schools
- Energy Efficiency Rating: C



Hallway

With Storage Cupboards 4'2" x 13'3" (1.27 x 4.04 meters)

Bedroom 1

11'0" x 10'8" (3.38 x 3.26 meters)

Bedroom 2

9'6" x 10'7" (2.91 x 3.23 meters)

Bathroom

Has had a new shower installed 6'7" x 6'1" (2.01 x 1.87 meters)

Lounge/Diner

21'5" x 9'9" (6.55 x 2.97 meters)

Kitchen

7'11" x 7'11" (2.43 x 2.42 meters)



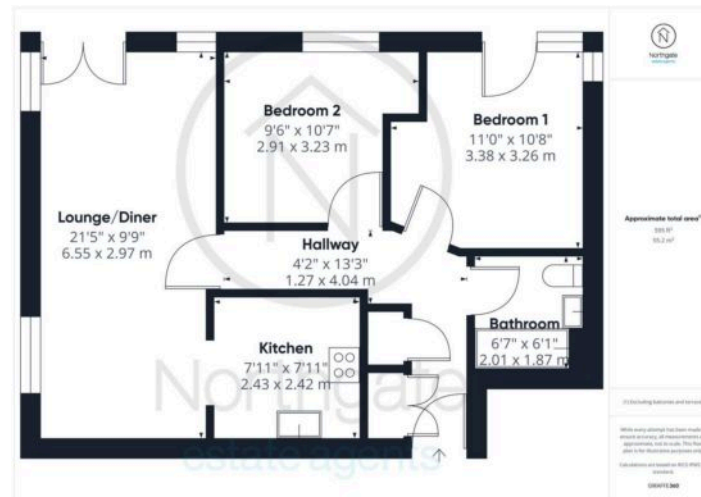
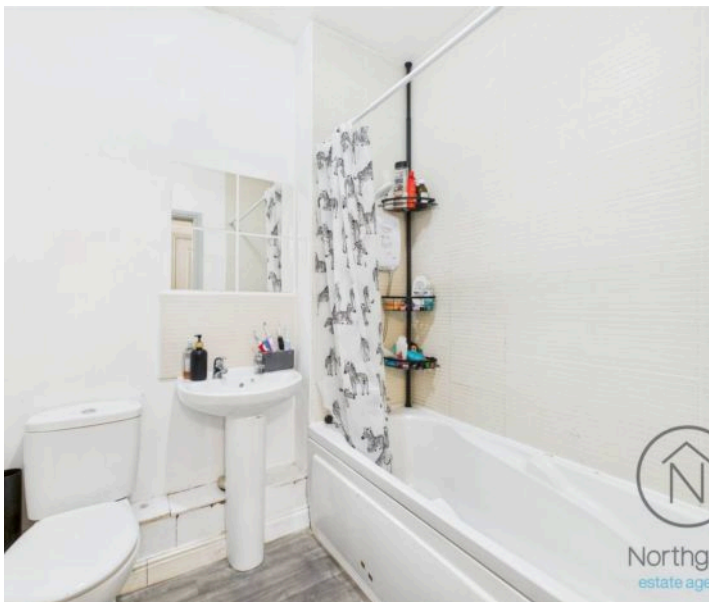


COMMUNAL GARDEN

ALLOCATED PARKING

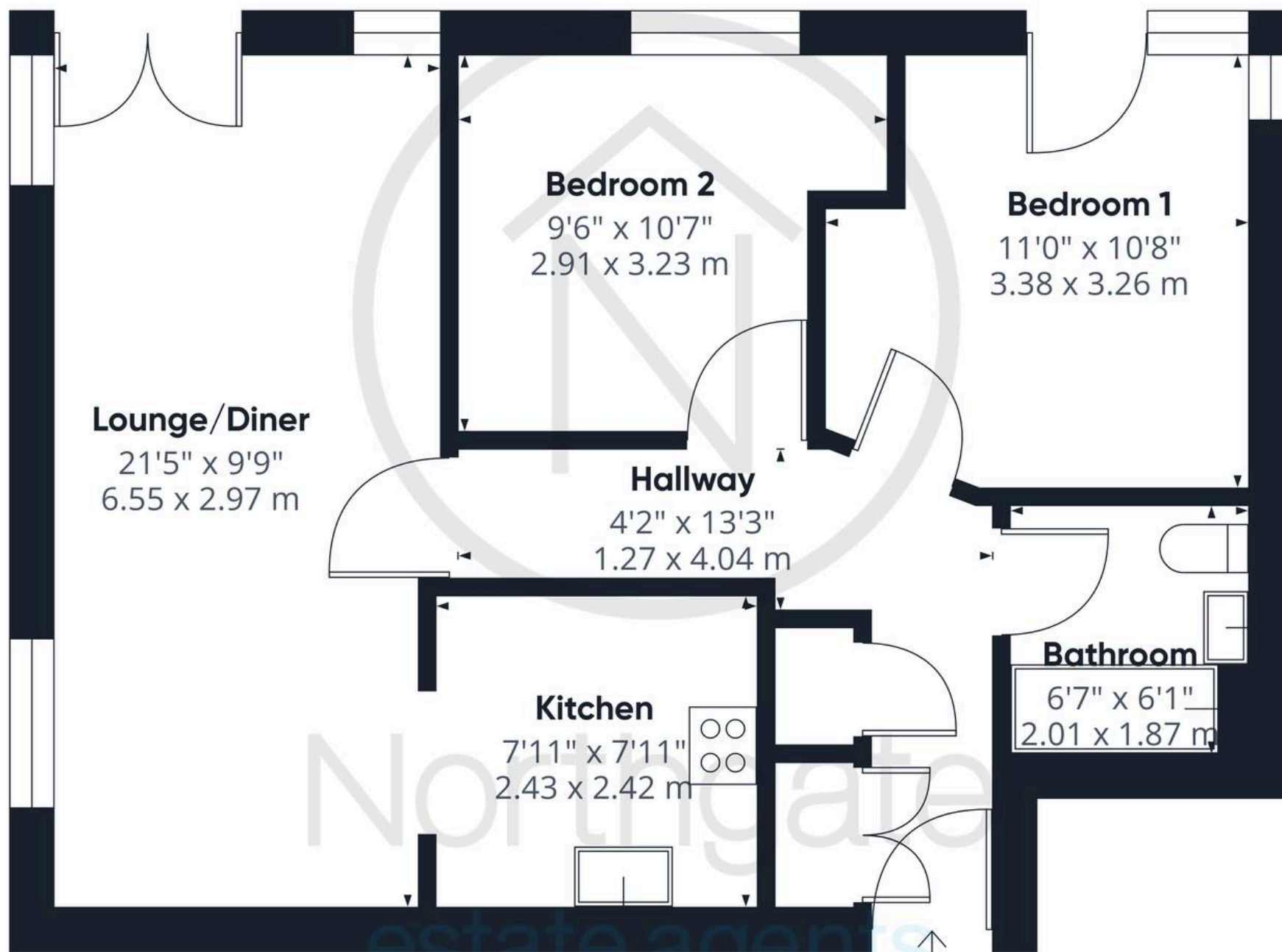
1 Parking Space

Allocated parking has door number





Northgate
estate agents



Approximate total area⁽¹⁾

595 ft²

55.2 m²

(1) Excluding balconies and terraces

While every attempt has been made to ensure accuracy, all measurements are approximate, not to scale. This floor plan is for illustrative purposes only.

Calculations are based on RICS IPMS 3C standard.

GIRAFFE360



Northgate - County Durham

Northgate Estate Agents, Suite 3 - DL5 4DH

01325 728333 • info@northgates.net • www.northgates.co.uk/



These particulars do not constitute, nor constitute part of, an offer or contract. No warranties are provided. Verify details through inspection. Northgate estate agents, nor any person in their employment has any authority to make or give any representation or warranty whatever in the relation to this property. All measurements are approximate.