



Beechfield, Newton Aycliffe



Offers in Region of £90,000



Beechfield

Newton Aycliffe

This well-presented three-bedroom mid-terrace home is offered for sale with no onward chain, making it a great option for first-time buyers, families or investors. The property offers a spacious and practical layout with well-maintained interiors throughout.

The ground floor features a generous lounge with a stylish feature fireplace and patio doors opening onto the rear garden, bringing in plenty of natural light. The kitchen and dining area is fitted with units and integrated appliances, creating a bright and functional space for everyday living. A ground floor WC adds further convenience.

First floor; there are three well-proportioned bedrooms and a family bathroom, offering comfortable accommodation for a range of buyers.

Externally, the property benefits from a rear garden with both patio and lawn areas—ideal for relaxing or entertaining—as well as a courtyard with useful outbuilding storage.

Neat, tidy and ready to move into, this home offers excellent value and the chance to make it your own.

Council Tax band: A

Tenure: Freehold



Hallway:

8'10" x 10'4" (2.70 x 3.15 m)

WC:

5'2" x 2'5" (1.58 x 0.74 m)

Kitchen/Diner:

9'0" x 13'7" (2.76 x 4.16 m)

Living Room:

18'5" x 9'10" (5.62 x 3.01 m)

Porch:

5'5" x 3'5" (1.67 x 1.06 m)

First Floor

Bedroom One:

12'2" x 11'5" (3.73 x 3.49 m)

Bedroom Two:

9'3" x 10'6" (2.83 x 3.22 m)

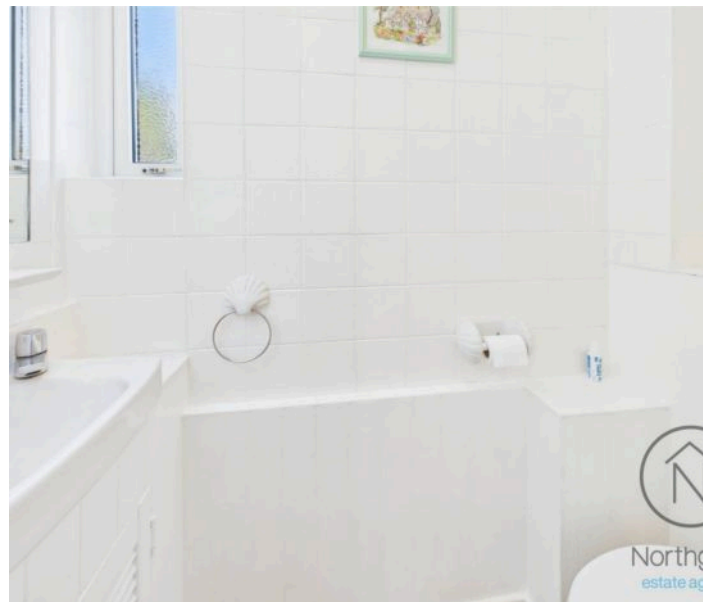
Bedroom Three:

9'0" x 7'3" (2.76 x 2.23 m)

Bathroom:

6'2" x 6'2" (1.88 x 1.90 m)

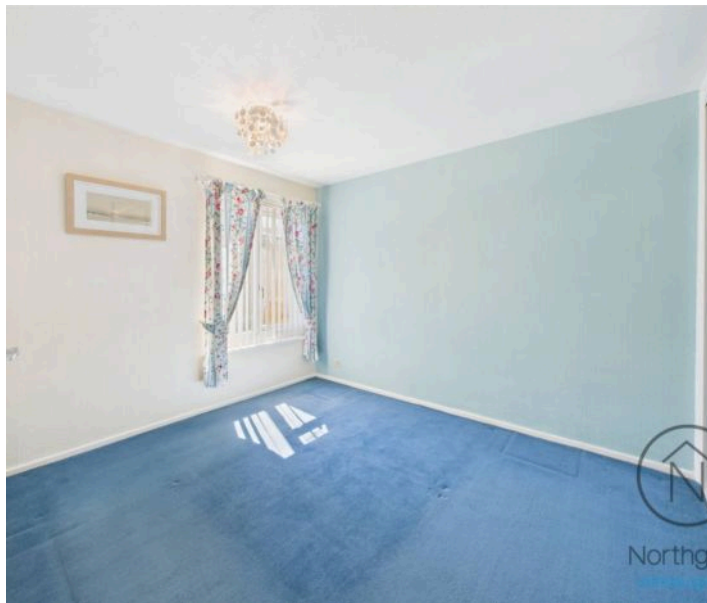
- Three Bedroom Mid Terrace - For Sale With No Onward Chain
- Kitchen / Dining Room With Appliances
- Lounge With Feature Fire & Patio Door To Garden
- Ground Floor W.C. & First Floor Family Bathroom
- Courtyard with outbuilding storage and Garden with patio and lawn area.
- Energy performance rating: C





GARDEN

ON STREET







Northgate
estate agents

Approximate total area⁽¹⁾

867 ft²

80.5 m²

(1) Excluding balconies and terraces

While every attempt has been made to ensure accuracy, all measurements are approximate, not to scale. This floor plan is for illustrative purposes only.

Calculations were based on RICS IPMS 3C standard. Please note that calculations were adjusted by a third party and therefore may not comply with RICS IPMS 3C.

GIRAFFE360



Ground Floor



Floor 1