



102 Washington Crescent, Newton Aycliffe
Newton Aycliffe



In Excess of £67,000



102 Washington Crescent

Newton Aycliffe, Newton Aycliffe

****NO CHAIN****

This two-bedroom end of terrace house is located in a popular residential area and is being offered with no onward chain. It's an ideal opportunity for buyers looking for a property they can update and make their own.

The ground floor features a good-sized lounge, leading into a kitchen/diner that offers a practical layout with space for improvement. With some modernisation, this area could become a great social and functional space.

Upstairs, there are two double bedrooms, both offering plenty of room and potential for personalisation. The property requires updating throughout, making it well-suited to someone looking for a project.

Located close to local amenities, schools, and transport links, it offers convenience along with the quiet of a residential setting. Whether you're a first-time buyer or an investor, this property has a lot to offer in terms of potential and location.

Please note: All services/appliances have not and will not be tested

Council Tax band: A

Tenure: Freehold

- 2 Bedroom Terraced **No Chain**
- Spacious Lounge, Kitchen/Diner
- Two Double Bedrooms
- In need of Modernisation throughout
- Energy Performance Certificate: E



Entrance

2'9" x 3'9" (0.85m x 1.15m)

Kitchen/Diner

15'2" x 13'2" (4.63m x 4.03m)

Lounge

14'11" x 10'2" (4.56m x 3.12m)

Landing

2'9" x 5'6" (0.86m x 1.68m)

Bedroom 1

14'9" x 10'1" (4.51m x 3.09m)

Bedroom 2

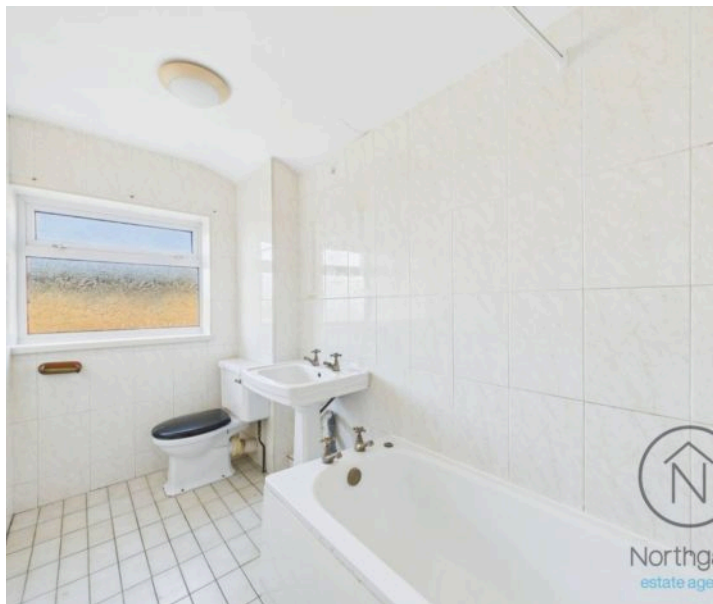
9'11" x 13'2" (3.03m x 4.02m)

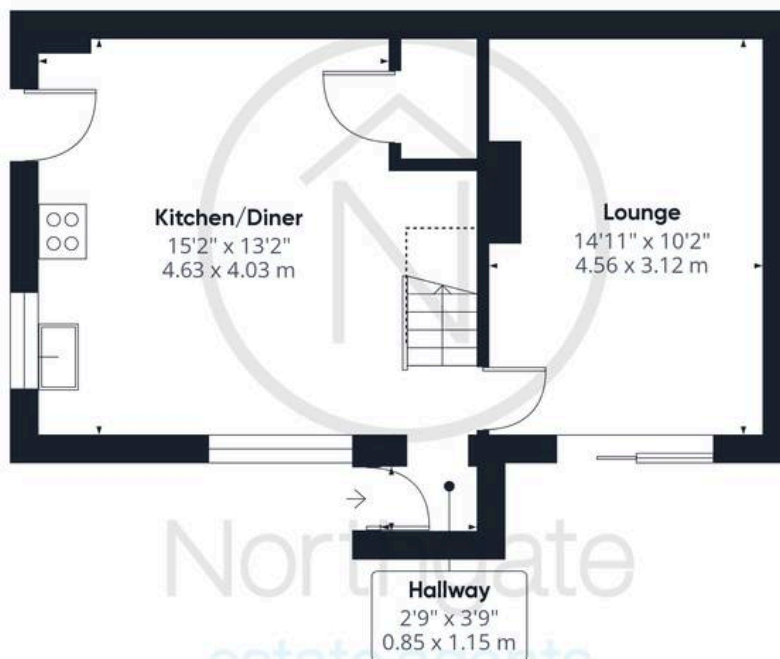
Bathroom

4'9" x 10'4" (1.47m x 3.16m)

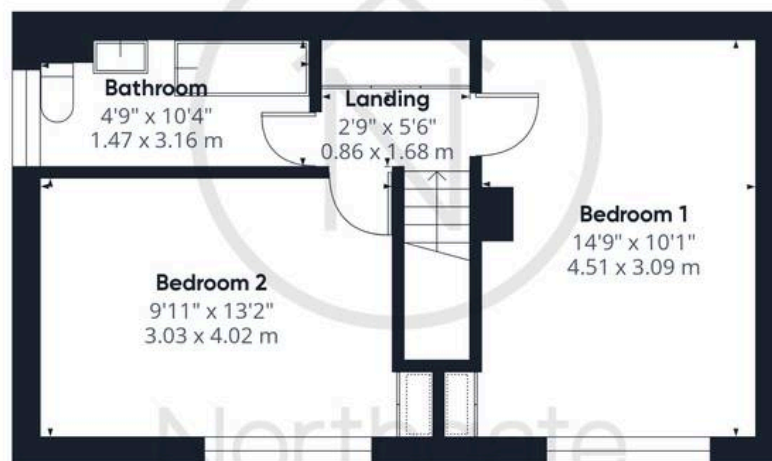


FRONT GARDEN





Ground Floor



Floor 1

Approximate total area⁽¹⁾

761.12 ft²

70.71 m²

Reduced headroom

10.68 ft²

0.99 m²

(1) Excluding balconies and terraces

Reduced headroom

..... Below 5 ft/1.5 m

While every attempt has been made to ensure accuracy, all measurements are approximate, not to scale. This floor plan is for illustrative purposes only.

Calculations are based on RICS IPMS 3C standard.

GIRAFFE360



Northgate - County Durham

Northgate Estate Agents, Suite 3 - DL5 4DH

01325 728333 • info@northgates.net • www.northgates.co.uk/



These particulars do not constitute, nor constitute part of, an offer or contract. No warranties are provided. Verify details through inspection. Northgate estate agents, nor any person in their employment has any authority to make or give any representation or warranty whatever in the relation to this property. All measurements are approximate.