



Conan Drive, Richmond
Richmond



Offers in Region of £215,000



34 Conan Drive

Richmond, Richmond

Beautiful Two-Bedroom Semi-Detached Home with Garage

Situated in a sought-after area of Richmond, this beautifully presented two-bedroom semi-detached home is perfect for a variety of buyers.

The ground floor features a spacious living room, a bright dining area, and a well-equipped kitchen. A charming conservatory at the rear opens onto a well-maintained garden, creating the perfect space for relaxation and entertaining.

Upstairs, the property boasts two generously sized double bedrooms and a modern bathroom.

Externally, the home offers front and rear gardens, a private driveway, and a garage, providing ample parking and storage.

A fantastic opportunity to own a stylish and comfortable home in a desirable location. Viewing is highly recommended!

Council Tax band: B

Tenure: Freehold

- Two Bedroomed Semi in a Very Popular Location
- Lounge/ Dining Room/ Conservatory
- Nicely Presented Throughout
- Two Double Bedrooms
- Driveway Parking
- Energy Performance Certificate: TBC



Hallway

5'0" x 3'5" (1.53m x 1.06m)

Lounge

13'2" x 13'9" (4.01m x 4.21m)

Dining Room

8'11" x 9'9" (2.73m x 2.99m)

Kitchen

6'10" x 9'9" (2.10m x 2.99m)

Conservatory

8'9" x 9'1" (2.69m x 2.79m)

Garage

10'11" x 12'2" (3.08m x 3.71m)

Storage

10'0" x 6'8" (3.07m x 2.05m)

Landing

7'1" x 4'7" (2.18m x 1.41m)

Bedroom 1

13'3" x 9'11" (4.04m x 3.03m)

Bedroom 2

9'6" x 12'0" (2.91m x 3.66m)

Bathroom

6'5" x 6'1" (1.97m x 2.16m)





FRONT GARDEN

REAR GARDEN

GARAGE

Single Garage

DRIVEWAY

1 Parking Space

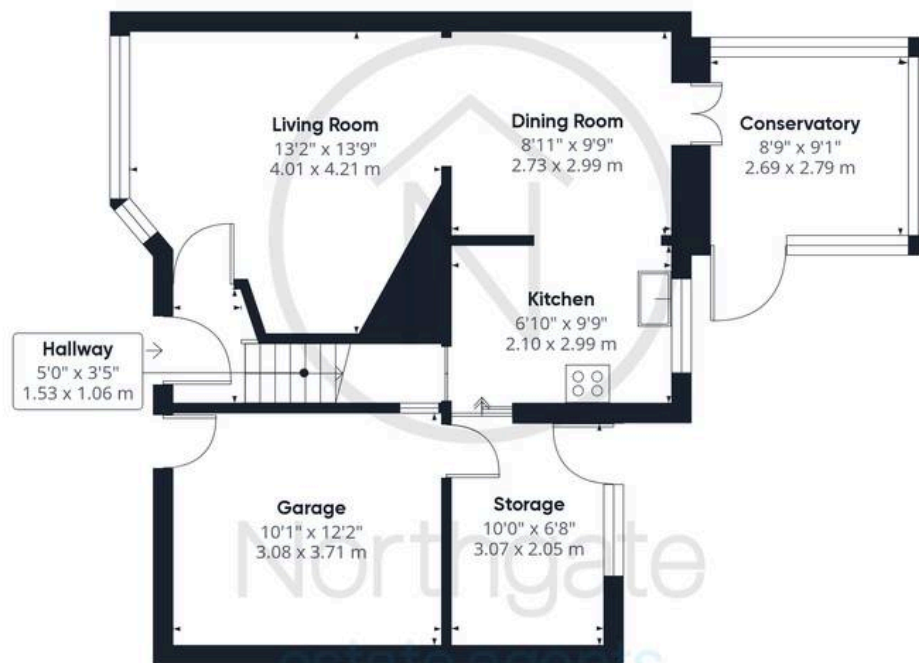








Northgate
estate agents

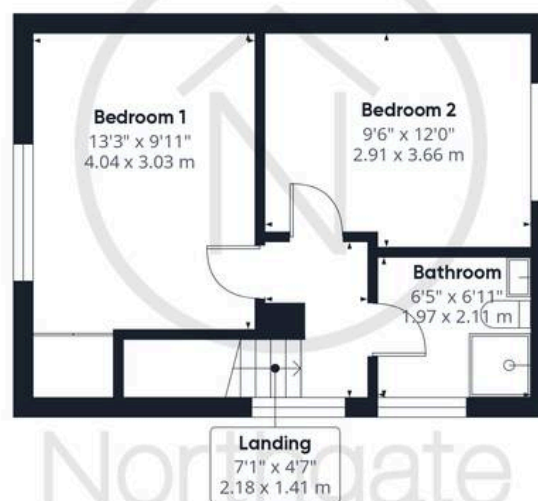


Ground Floor

Approximate total area⁽¹⁾

964.56 ft²

89.61 m²



Floor 1

(1) Excluding balconies and terraces

While every attempt has been made to ensure accuracy, all measurements are approximate, not to scale. This floor plan is for illustrative purposes only.

Calculations were based on RICS IPMS 3C standard. Please note that calculations were adjusted by a third party and therefore may not comply with RICS IPMS 3C.

GIRAFFE 360



Northgate - County Durham

Northgate Estate Agents, Suite 3 - DL5 4DH

01325 728333 • info@northgates.net • www.northgates.co.uk/



These particulars do not constitute, nor constitute part of, an offer or contract. No warranties are provided. Verify details through inspection. Northgate estate agents, nor any person in their employment has any authority to make or give any representation or warranty whatever in the relation to this property. All measurements are approximate.