



Cleadon Avenue, Billingham - TS23 3SH



In Excess of £120,000



29 Cleadon Avenue, Billingham

Offers Invited Between £120,000 and £130,000

Nestled within a sought-after area, this charming three-bedroom end terrace home presents an exceptional opportunity for first-time buyers to acquire their dream home. Boasting a convenient location and available with no onward chain, this property features a well-designed layout that seamlessly flows from the porch into a cosy lounge, leading to a spacious kitchen/diner that serves as the heart of the home. Ascending to the first floor, a well-appointed landing provides access to a bathroom and three comfortably-sized bedrooms, offering ample space. Enhanced by UPVC double-glazing and gas central heating, this home promises a comfortable, energy-efficient living environment for its new occupants. Externally the property has garden to front and a south facing garden to the rear.

While we have made efforts to ensure the accuracy of the information provided in our sales particulars, please note that we have gathered this information from the seller. Should you require further details or clarification on any specific matter, we kindly request you to contact our office where we are ready to gather evidence or conduct further investigations on your behalf.

It is important to note that Northgate has not tested any of the services, appliances, or equipment within this property. Therefore, we strongly recommend that prospective buyers arrange for their independent surveys or service reports before finalising the purchase of the property.

Council Tax band: A

Tenure: Freehold



Entrance Hall

3' 10" x 6' 1" (1.17m x 1.86m)

Lounge

13' 9" x 14' 8" (4.20m x 4.46m)

Kitchen/Diner

10' 7" x 14' 8" (3.23m x 4.46m)

Landing

7' 6" x 6' 1" (2.29m x 1.86m)

Bathroom

5' 4" x 6' 1" (1.62m x 1.86m)

Bedroom One

14' 2" x 8' 4" (4.32m x 2.54m)

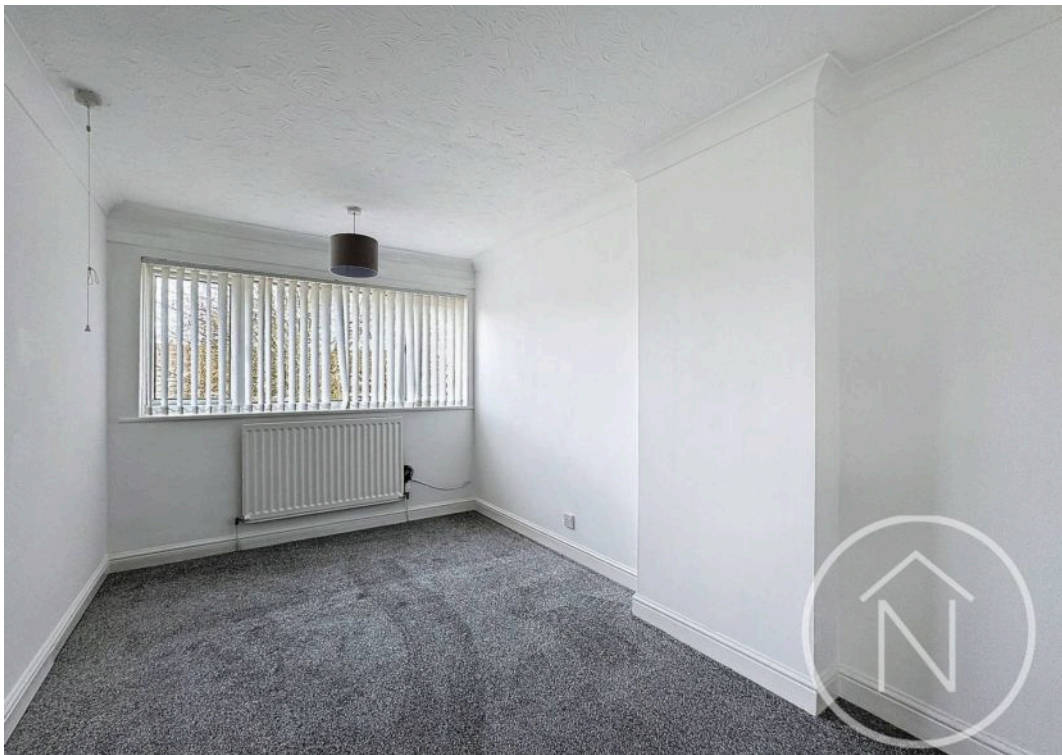
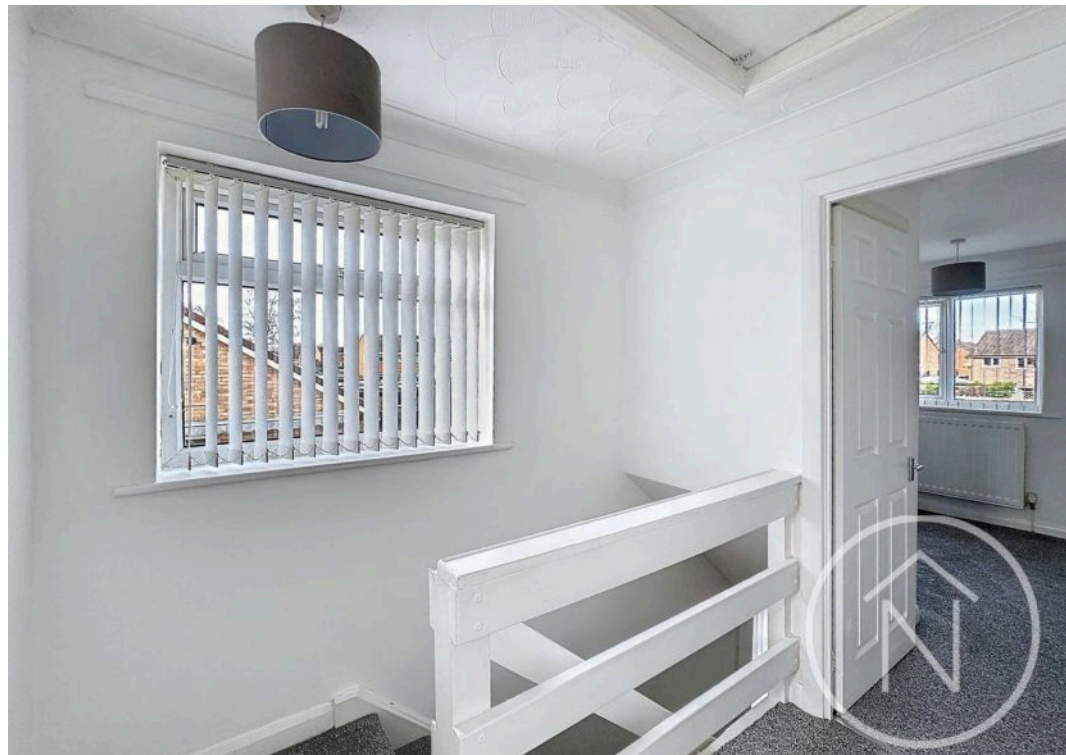
Bedroom Two

10' 10" x 8' 2" (3.29m x 2.50m)

Bedroom Three

11' 3" x 6' 1" (3.42m x 1.86m)

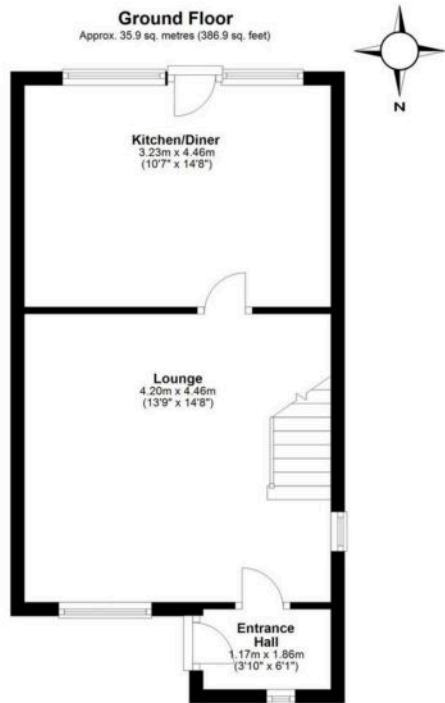






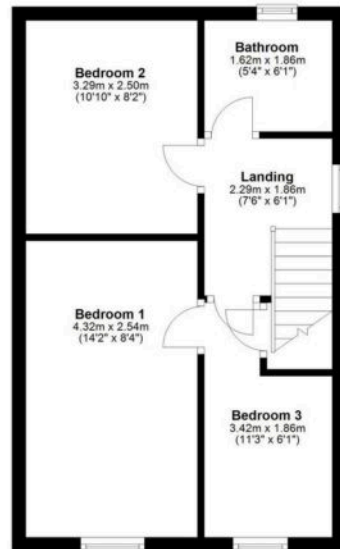
Ground Floor

Approx. 35.9 sq. metres (386.9 sq. feet)



First Floor

Approx. 34.2 sq. metres (368.2 sq. feet)



Total area: approx. 70.2 sq. metres (755.1 sq. feet)

floor plan(s) by Northgate! for illustration purpose only all measurements are approximate.
Plan produced using PlanUz.



Northgate - Teesside

8 Town Square, Billingham - TS23 2LY

01642 813222

billingham@northgates.net

www.northgates.co.uk/

While we have made efforts to ensure the accuracy of the information provided in our sales particulars, please note that we have gathered this information from the seller. Should you require further details or clarification on any specific matter, we kindly request you to contact our office where we are ready to gather evidence or conduct further investigations on your behalf. It is important to note that Northgate has not tested any of the services, appliances, or equipment within this property. Therefore, we strongly recommend that prospective buyers arrange for their independent surveys or service reports before finalising the purchase of the property.