



15 Buxton Gardens, Billingham - TS22 5AJ
Billingham



Guide Price £180,000



15 Buxton Gardens

Billingham, Billingham

Offers Invited Between £180,000 And £190,000

This charming three-bedroom semi-detached bungalow, with the added benefit of no onward chain, is nestled in a sought-after location on Wolviston Court. The property boasts modern conveniences such as UPVC double glazing and gas central heating, ensuring comfort and energy efficiency. Upon entering, you are greeted by a welcoming porch leading to a spacious hallway that flows seamlessly into the lounge, open plan to a dining area, creating an ideal space for relaxed family living and entertaining. The well-appointed kitchen has ample storage and workspace. The accommodation is completed by a bathroom and three generously sized bedrooms, all thoughtfully designed to cater to modern lifestyles. To the rear of the property lies a delightful south-facing garden, providing a tranquil retreat to enjoy outdoor living and soak up the sunshine. Additionally, the property benefits from a driveway and garage, ensuring ample off-road parking and storage, making this an ideal home for families or professionals seeking both convenience and comfort.

While we have made efforts to ensure the accuracy of the information provided in our sales particulars, please note that we have gathered this information from the seller. Should you require further details or clarification on any specific matter, we kindly request you to contact our office where we are ready to gather evidence or conduct further investigations on your behalf.

It is important to note that Northgate has not tested any of the services, appliances, or equipment within this property. Therefore, we strongly recommend that prospective buyers arrange for their independent surveys or service reports before finalising the purchase of the property.

Council Tax band: C

Tenure: Freehold

EPC Energy Efficiency Rating: D

EPC Environmental Impact Rating:







Porch

Hallway

Lounge

15' 11" x 12' 1" (4.84m x 3.68m)

Dining Area

6' 0" x 9' 2" (1.84m x 2.79m)

Kitchen

7' 10" x 9' 11" (2.40m x 3.02m)

Bathroom

7' 5" x 6' 11" (2.26m x 2.12m)

Bedroom One

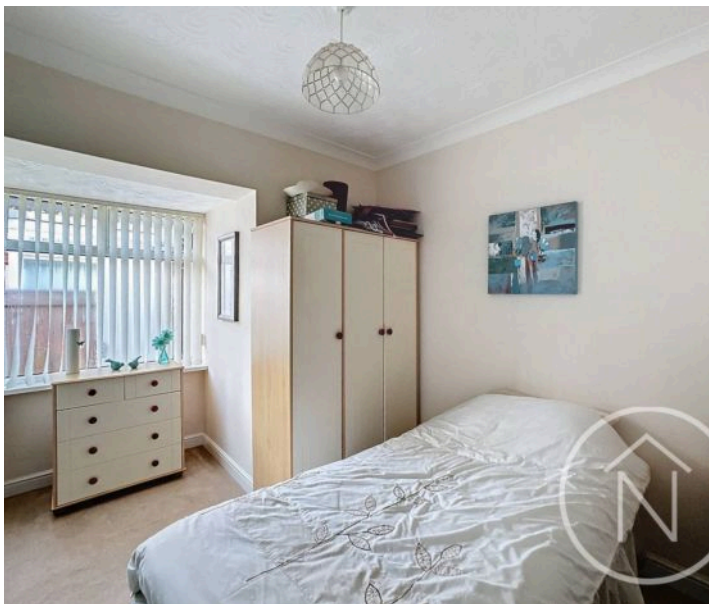
11' 11" x 11' 11" (3.63m x 3.64m)

Bedroom Two

10' 9" x 8' 5" (3.27m x 2.57m)

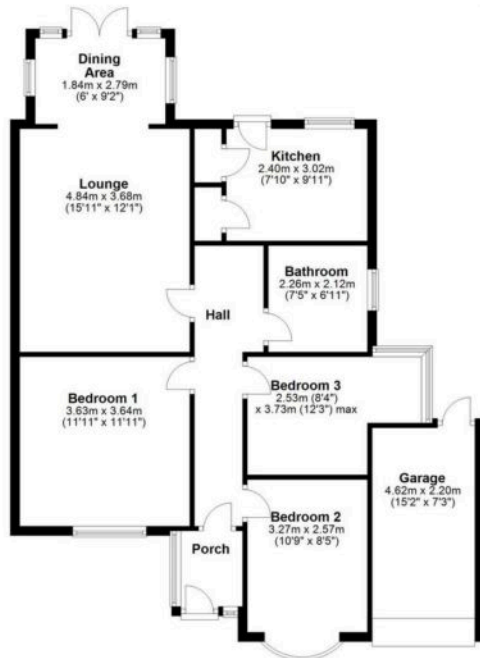
Bedroom Three

8' 4" x 12' 3" (2.53m x 3.73m)



Ground Floor

Approx. 79.3 sq. metres (853.1 sq. feet)



Total area: approx. 79.3 sq. metres (853.1 sq. feet)

Floor plans by Northgate: for illustration purposes only all measurements are approximate.
Plan produced using PlanIt.



Northgate - Teesside

8 Town Square, Billingham - TS23 2LY

01642 813222

billingham@northgates.net

www.northgates.co.uk/

While we have made efforts to ensure the accuracy of the information provided in our sales particulars, please note that we have gathered this information from the seller. Should you require further details or clarification on any specific matter, we kindly request you to contact our office where we are ready to gather evidence or conduct further investigations on your behalf. It is important to note that Northgate has not tested any of the services, appliances, or equipment within this property. Therefore, we strongly recommend that prospective buyers arrange for their independent surveys or service reports before finalising the purchase of the property.