



Thornton Crescent, Billingham - TS22 5AP



Guide Price £190,000 - £200,000



Thornton Crescent, Billingham

Offers Invited Between £190,000 and £200,000

Nestled in the desirable location of Wolviston Court, Billingham, rests this Three Bedroom Semi Detached Bungalow awaiting its new owners. Boasting a flawless modern interior design and offering the convenience of no onward chain, this property offers a harmonious blend of comfort and functionality. The inviting porch leads you inside to discover a spacious lounge flooded with natural light, a contemporary kitchen furnished with sleek appliances, and a convenient shower room for added comfort. The accommodation further extends to three well-proportioned bedrooms. Outside, the property sits proudly on a large corner plot, providing ample parking space for multiple vehicles and gardens to the front, side, and rear, ensuring outdoor recreational opportunities abound right at your doorstep.

While we have made efforts to ensure the accuracy of the information provided in our sales particulars, please note that we have gathered this information from the seller. Should you require further details or clarification on any specific matter, we kindly request you to contact our office where we are ready to gather evidence or conduct further investigations on your behalf.

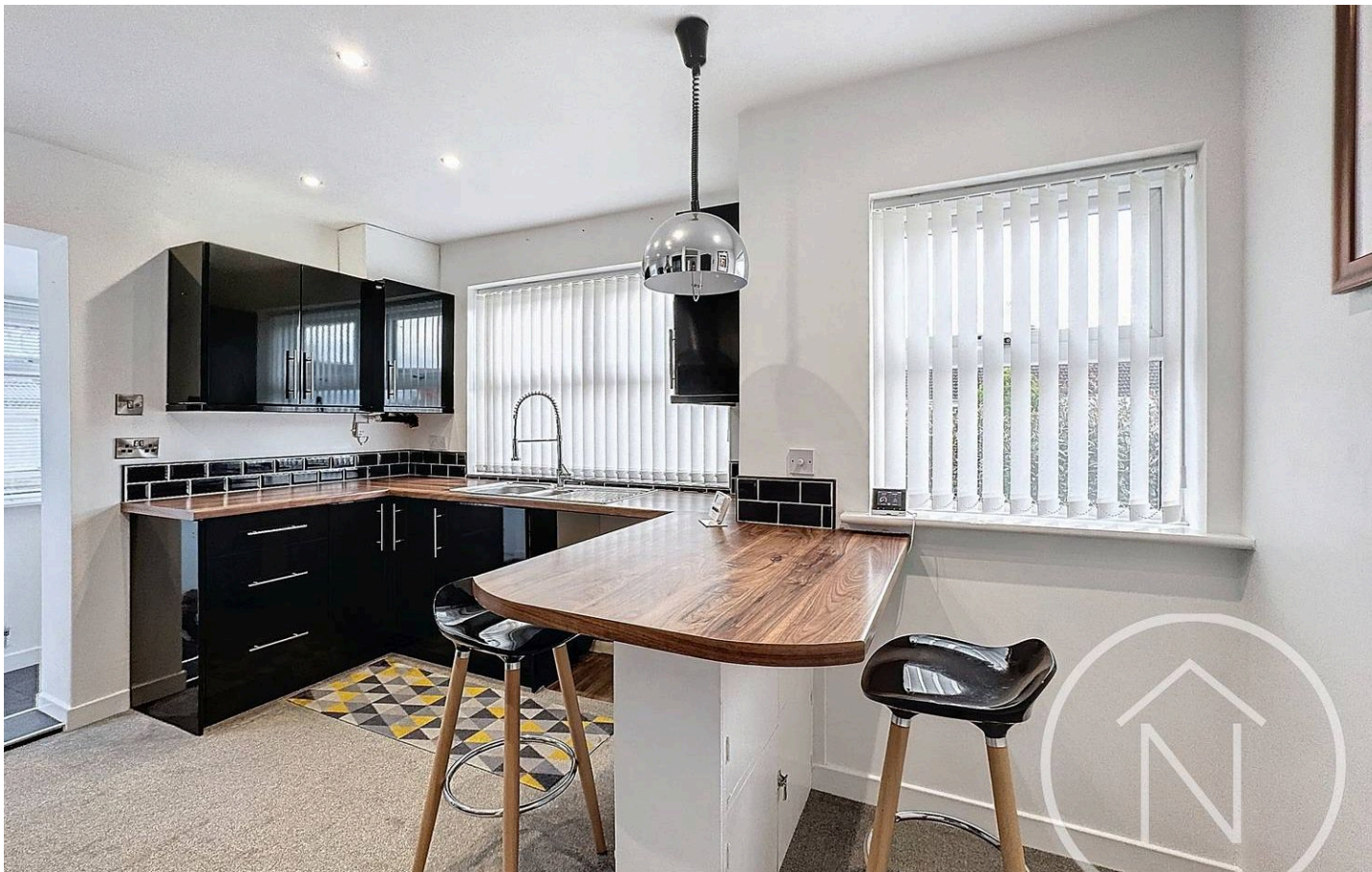
It is important to note that Northgate has not tested any of the services, appliances, or equipment within this property. Therefore, we strongly recommend that prospective buyers arrange for their independent surveys or service reports before finalising the purchase of the property.

Council Tax band: C

Tenure: Freehold

EPC Energy Efficiency Rating: C

EPC Environmental Impact Rating: C



Porch

6' 10" x 4' 0" (2.08m x 1.23m)

Kitchen

10' 8" x 13' 3" (3.26m x 4.03m)

Lounge

14' 11" x 10' 10" (4.55m x 3.29m)

Shower Room

4' 9" x 8' 6" (1.44m x 2.58m)

Bedroom One

11' 10" x 10' 10" (3.60m x 3.30m)

Bedroom Two

9' 5" x 13' 3" (2.86m x 4.05m)

Bedroom Three

7' 3" x 9' 10" (2.20m x 3.00m)



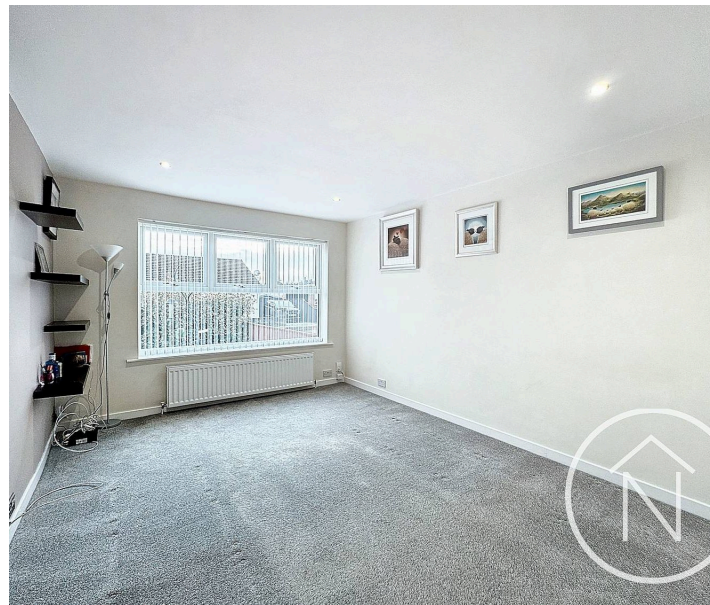
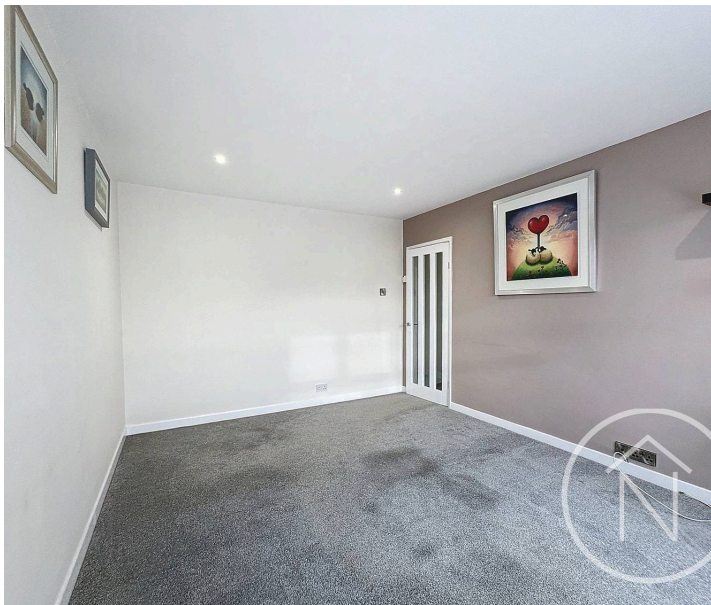


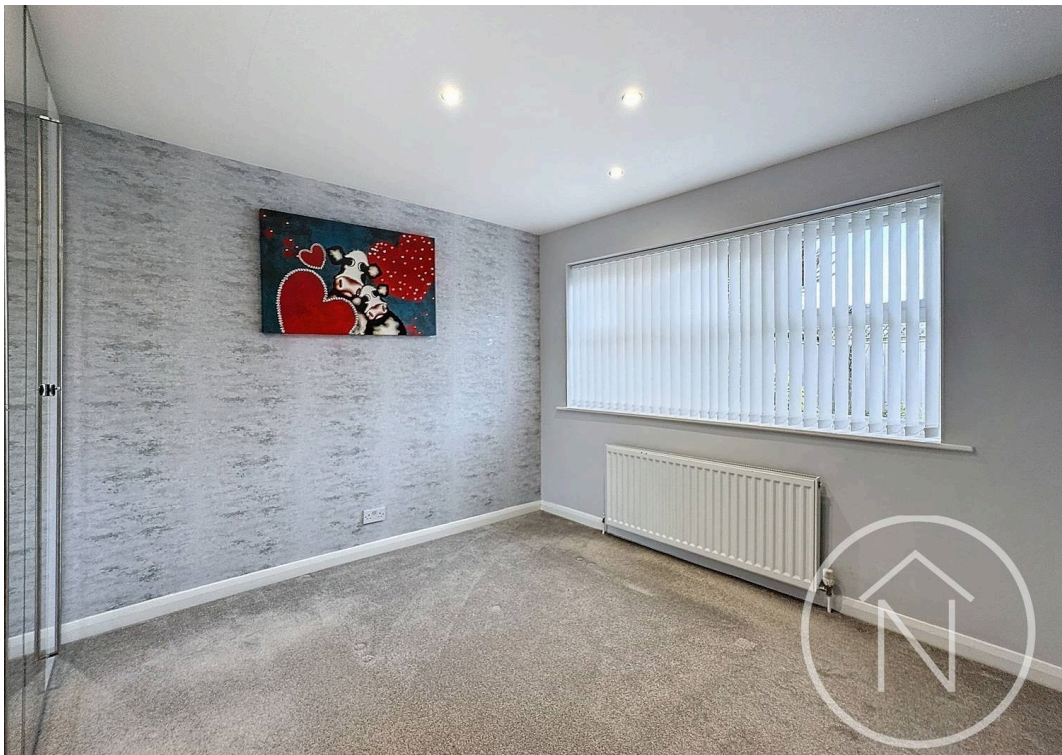
GARDEN

GARAGE

OFF STREET

DRIVEWAY

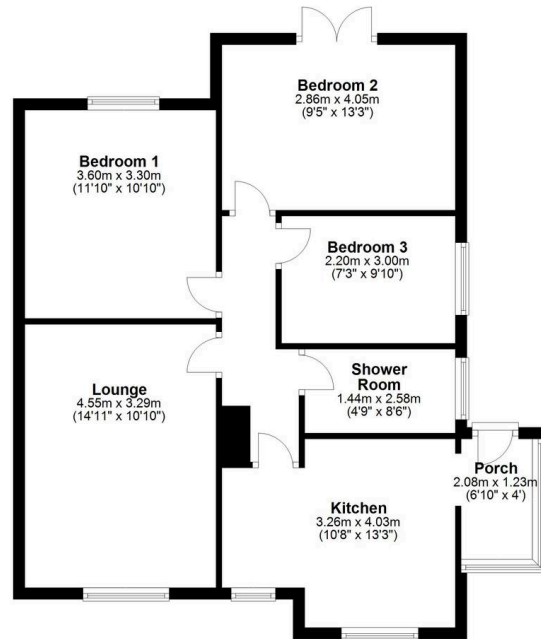






Ground Floor

Approx. 69.7 sq. metres (750.7 sq. feet)



Total area: approx. 69.7 sq. metres (750.7 sq. feet)

floor plan(s) by Northgate! for illustration purpose only all measurements are approximate.
Plan produced using PlanUp.



Northgate - Teesside

8 Town Square, Billingham - TS23 2LY

01642 813222

billingham@northgates.net

www.northgates.co.uk/

While we have made efforts to ensure the accuracy of the information provided in our sales particulars, please note that we have gathered this information from the seller. Should you require further details or clarification on any specific matter, we kindly request you to contact our office where we are ready to gather evidence or conduct further investigations on your behalf. It is important to note that Northgate has not tested any of the services, appliances, or equipment within this property. Therefore, we strongly recommend that prospective buyers arrange for their independent surveys or service reports before finalising the purchase of the property.