



Monkseaton Drive, Wolviston Court, TS225HD



Offers Invited Between £190,000 And £200,000





## Monkseaton Drive

### Wolviston Court

Offers Invited Between £190,000 and £200,000

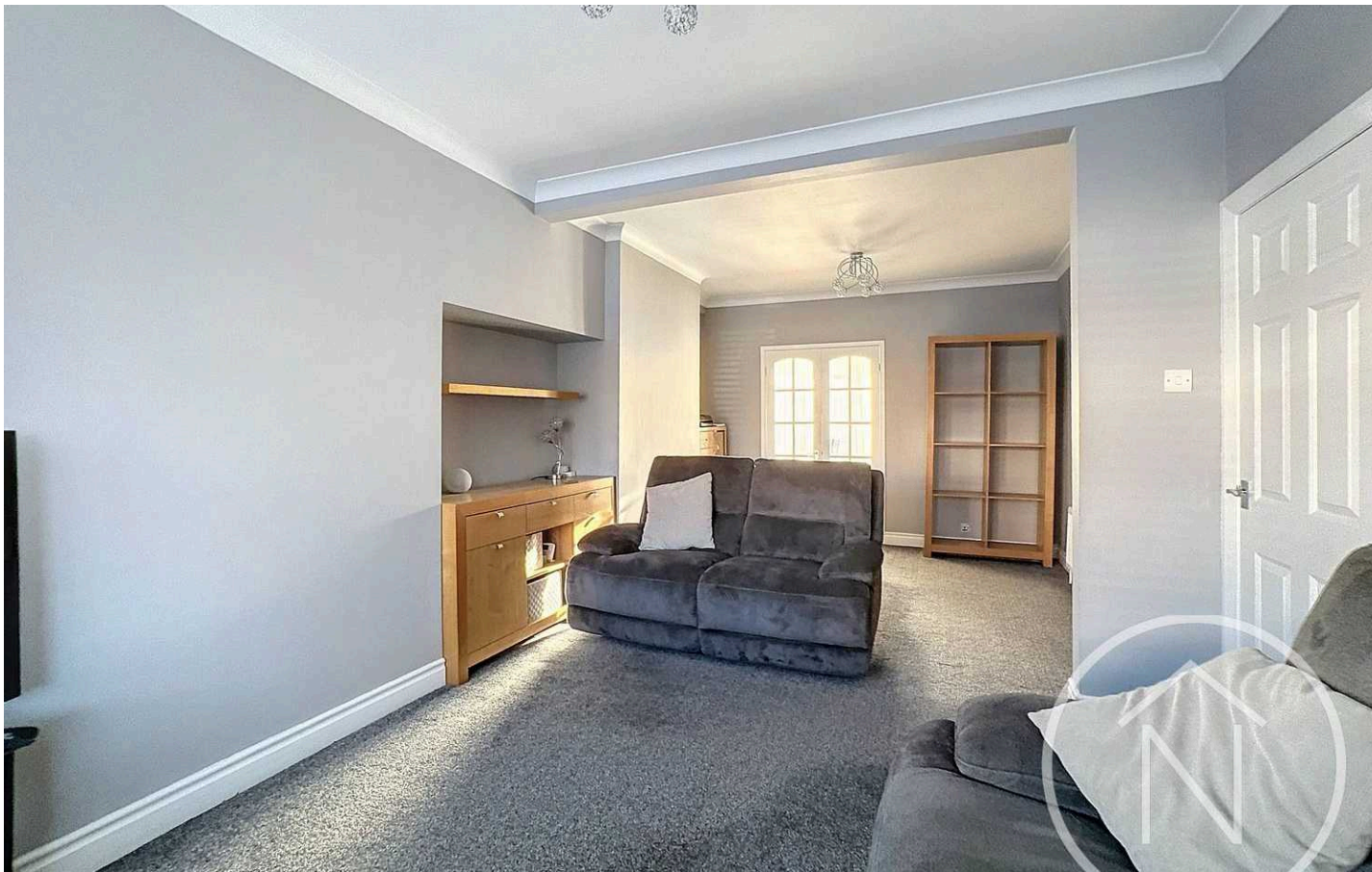
Welcome to this extended five-bedroom semi-detached gem, nestled in the heart of the desirable Wolviston Court neighbourhood. This fantastic, affordable, and spacious family home offers the perfect blend of comfort and style. Step inside to discover a well-designed layout featuring an inviting entrance hall, a cosy lounge for relaxation, and a kitchen/diner. Upstairs, the landing leads to a well-appointed family bathroom and five generously sized bedrooms, providing ample space for the whole family. Notably, the fifth bedroom was previously a bathroom, offering the option to reinstate for added convenience.

Step outside into the large south-facing rear garden, a true sanctuary for outdoor living and entertaining. Imagine enjoying sunny afternoons in this private and tranquil space, perfect for summer barbeques or simply unwinding after a long day. With a driveway and garage on hand, parking will never be an issue. Additionally, the UPVC double glazing and gas central heating enhance the comfort and efficiency of this property, ensuring a cosy ambience throughout the year. Don't miss this opportunity to make this charming property your new home sweet home!

Council Tax band: C

Tenure: Freehold





**Entrance Hall**

14' 1" x 5' 8" (4.29m x 1.72m)

**Lounge**

22' 1" x 11' 9" (6.72m x 3.58m)

**Kitchen/Diner**

14' 11" x 17' 3" (4.56m x 5.26m)

**Landing**

**Bathroom**

7' 1" x 7' 8" (2.16m x 2.33m)

**Bedroom One**

12' 11" x 10' 4" (3.93m x 3.16m)

**Bedroom Two**

9' 5" x 9' 8" (2.88m x 2.94m)

**Bedroom Three**

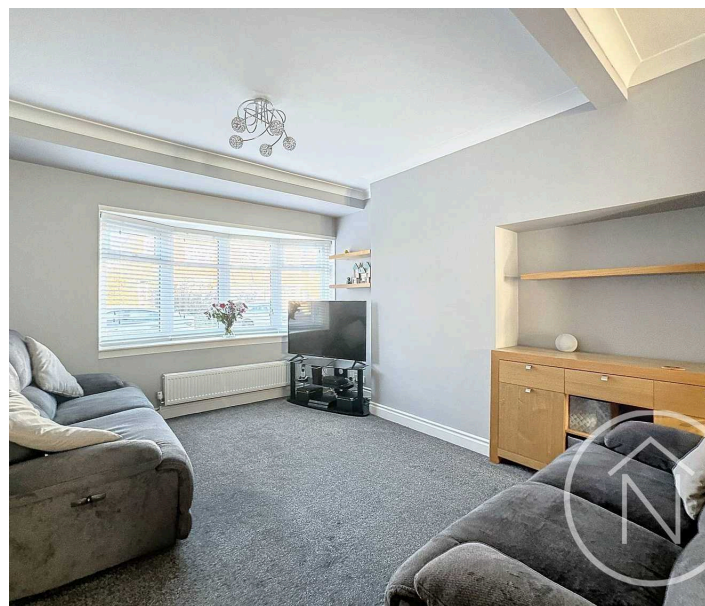
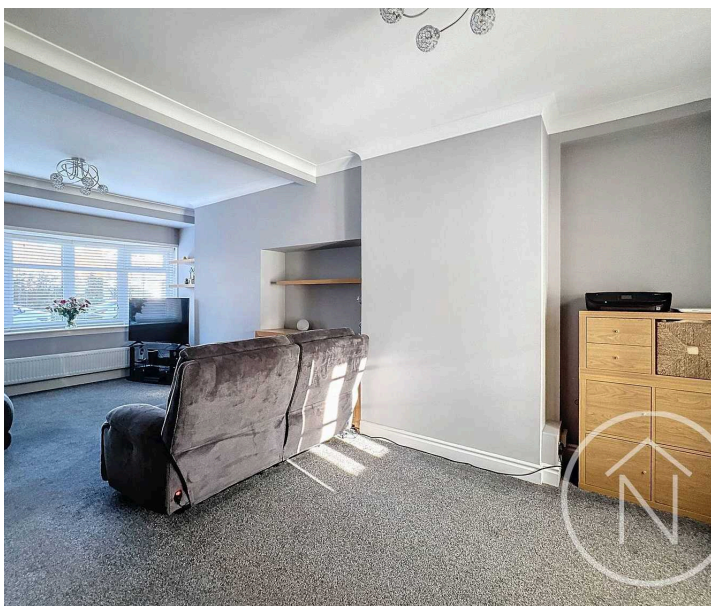
12' 6" x 6' 6" (3.80m x 1.98m)

**Bedroom Four**

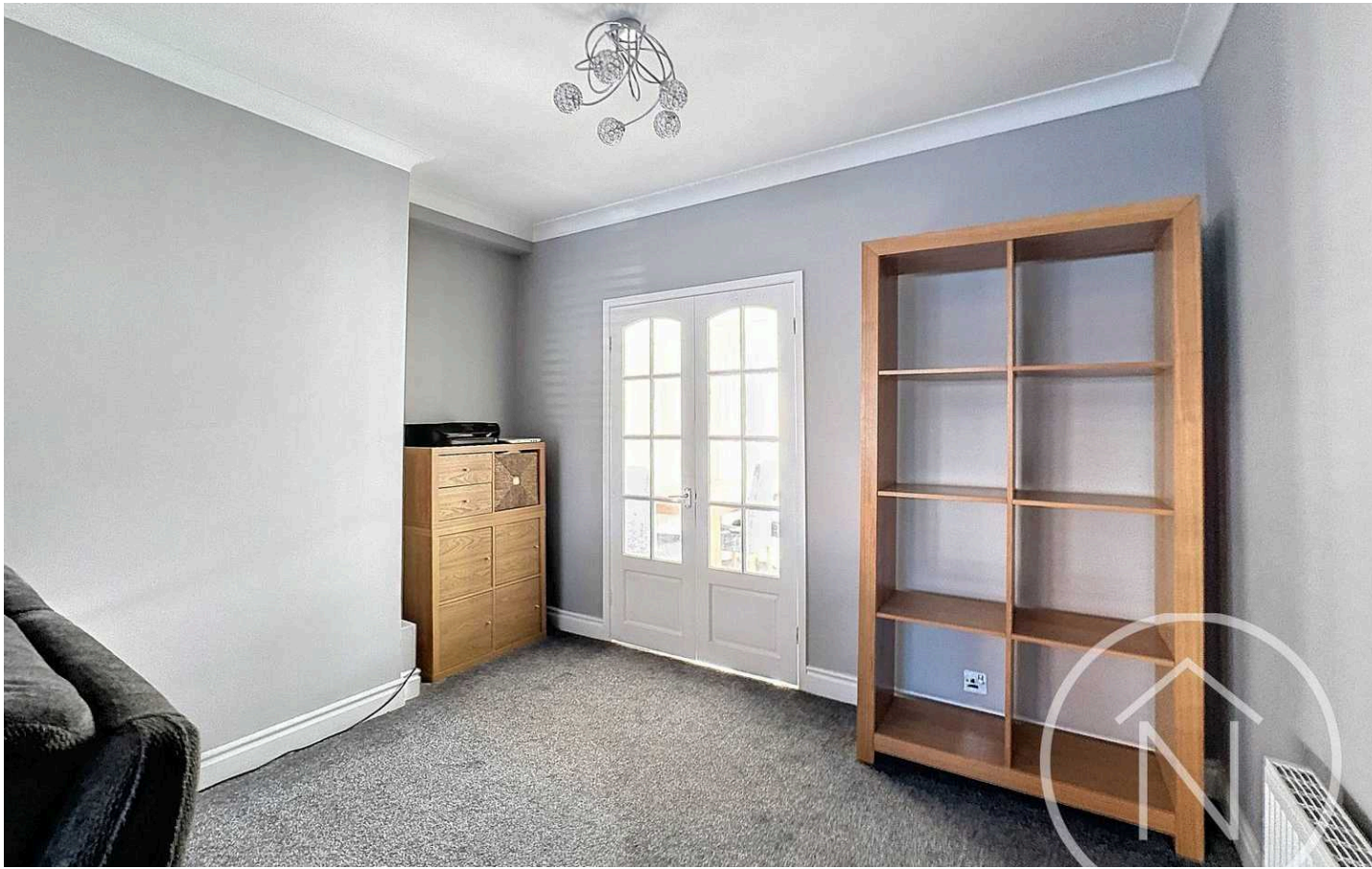
8' 4" x 8' 2" (2.54m x 2.50m)

**Bedroom Five**

9' 6" x 6' 6" (2.90m x 1.98m)







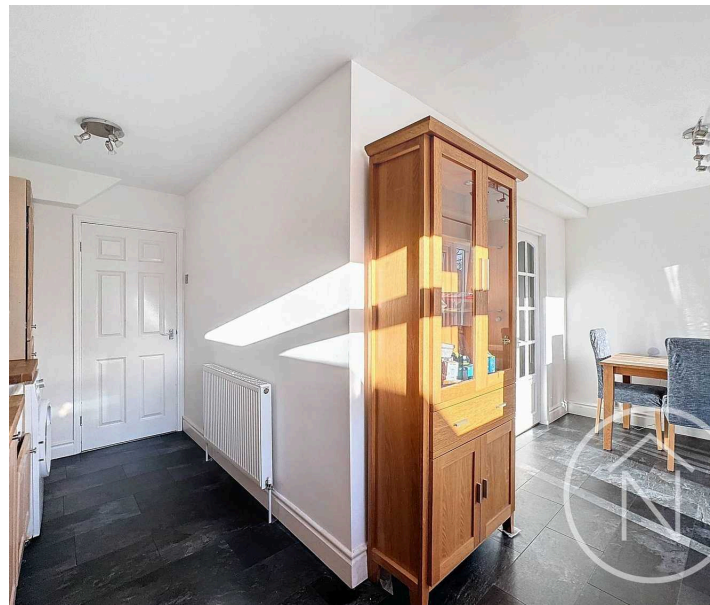
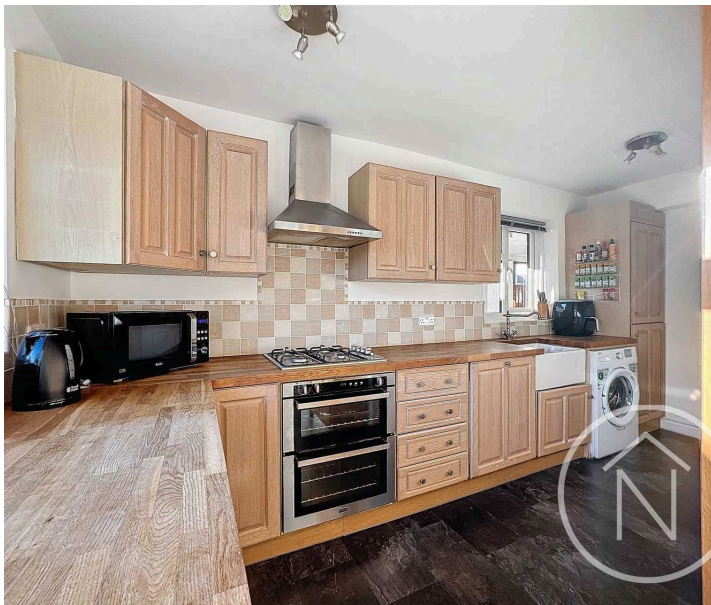
**GARDEN**

**GARAGE**

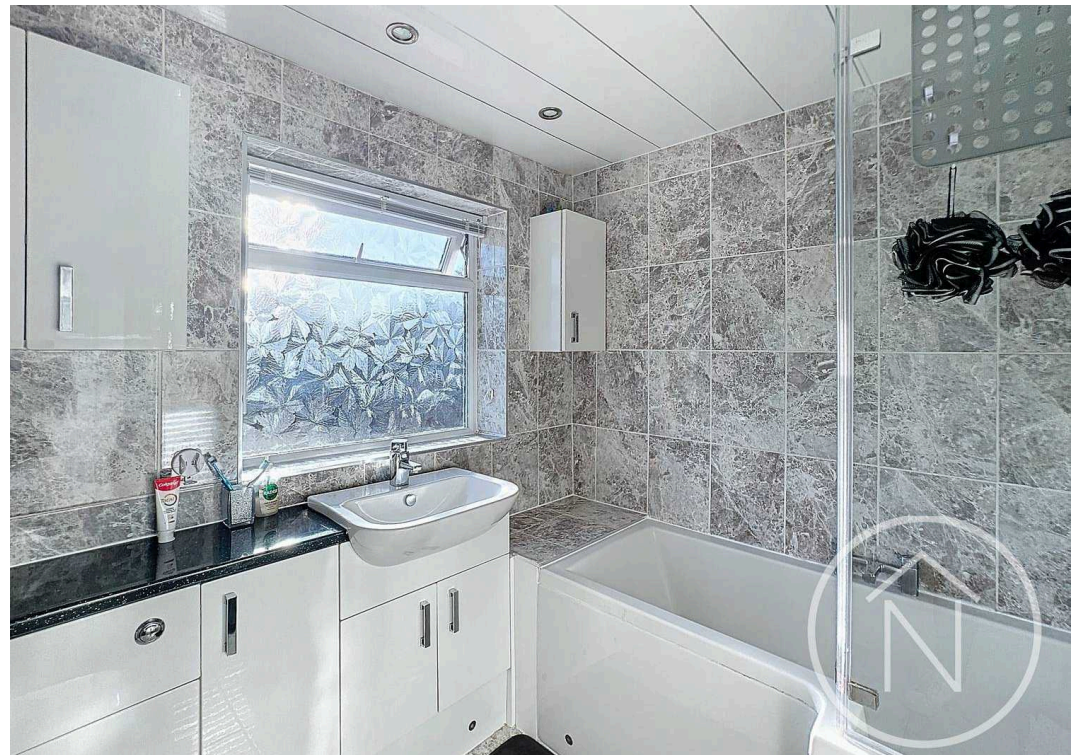
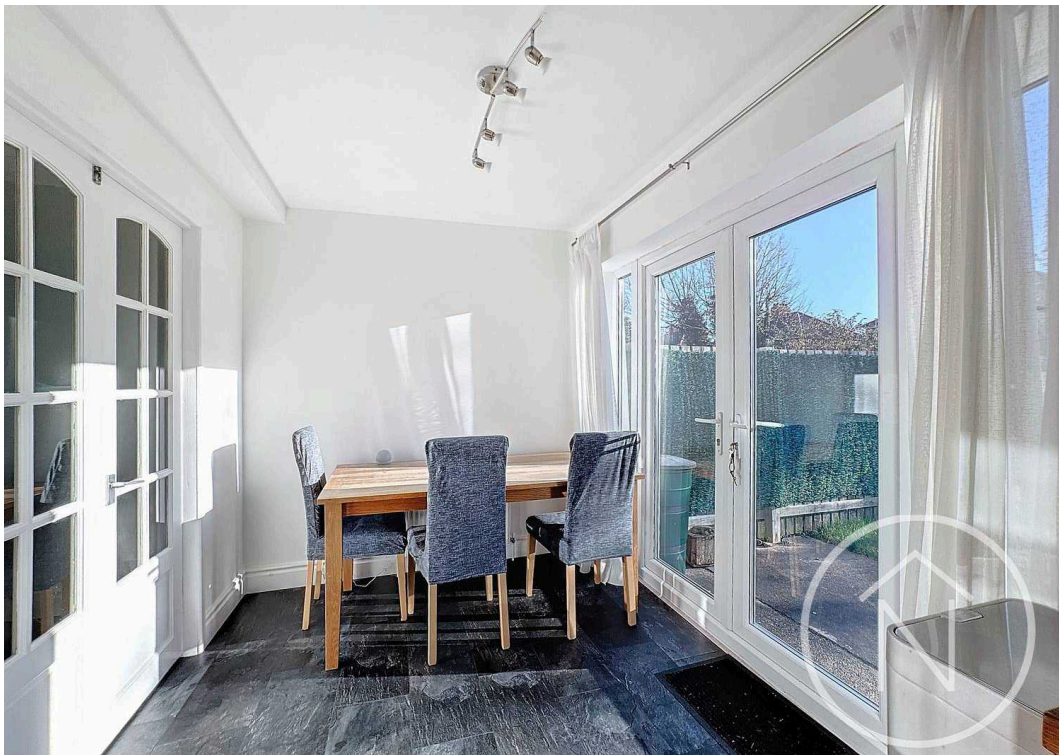
Single Garage

**DRIVEWAY**

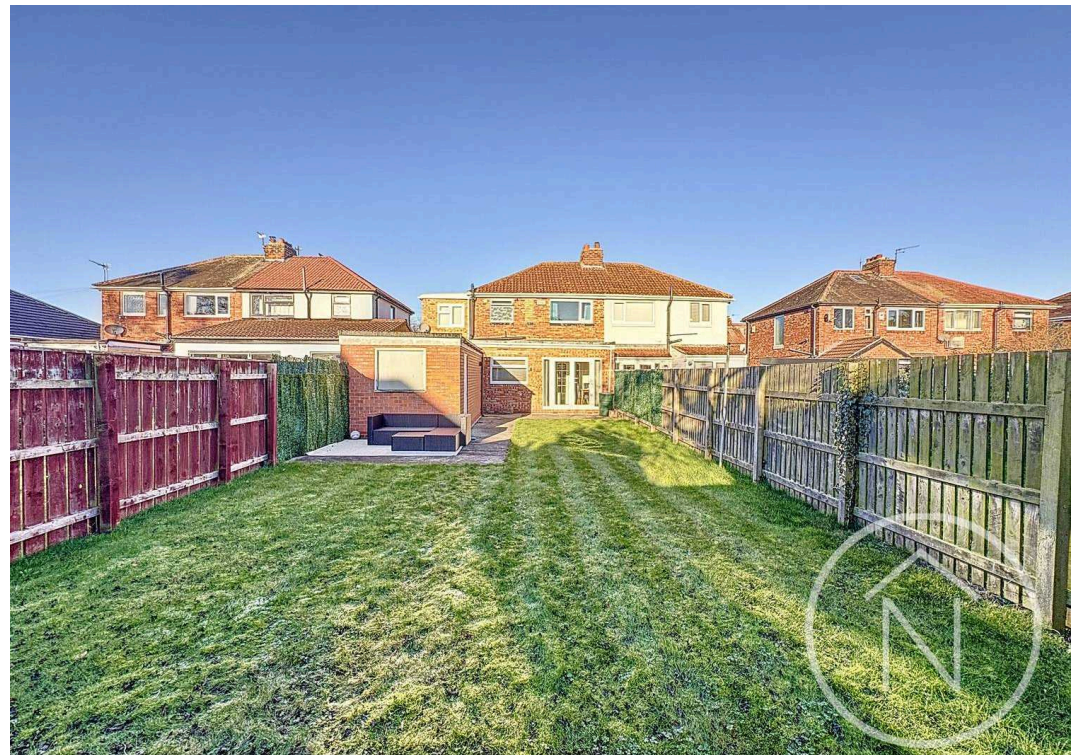
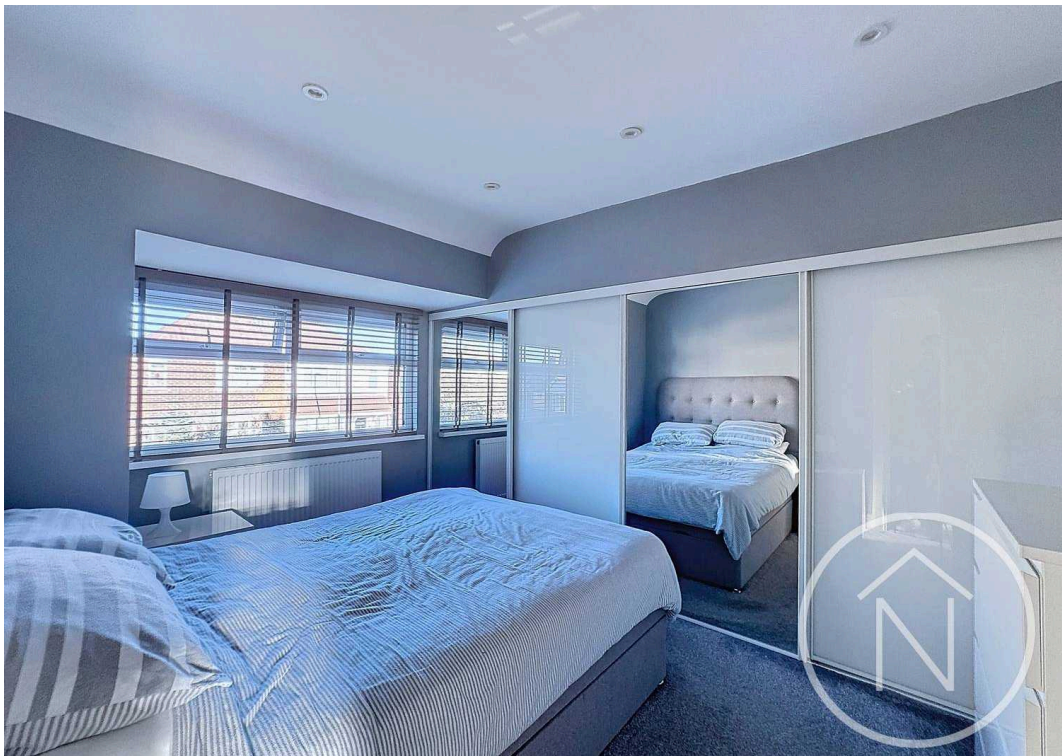
2 Parking Spaces





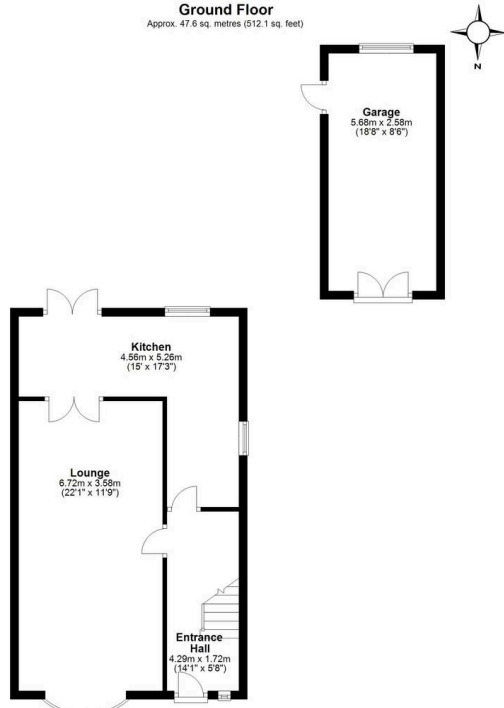








**Ground Floor**  
Approx. 47.6 sq. metres (512.1 sq. feet)

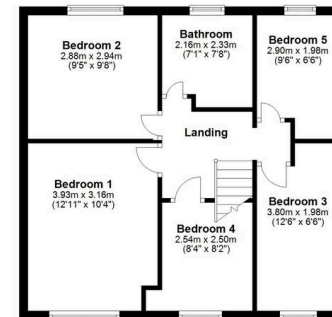


Total area: approx. 99.2 sq. metres (1067.6 sq. feet)

floor plans) by Northgate! for illustration purpose only all measurements are approximate. Plans produced using PlanUp.

**First Floor**

Approx. 51.6 sq. metres (555.5 sq. feet)







## Northgate - Teesside

8 Town Square, Billingham - TS23 2LY

01642 813222

[billingham@northgates.net](mailto:billingham@northgates.net)

[www.northgates.co.uk/](http://www.northgates.co.uk/)

While we have made efforts to ensure the accuracy of the information provided in our sales particulars, please note that we have gathered this information from the seller. Should you require further details or clarification on any specific matter, we kindly request you to contact our office where we are ready to gather evidence or conduct further investigations on your behalf. It is important to note that Northgate has not tested any of the services, appliances, or equipment within this property. Therefore, we strongly recommend that prospective buyers arrange for their independent surveys or service reports before finalising the purchase of the property.