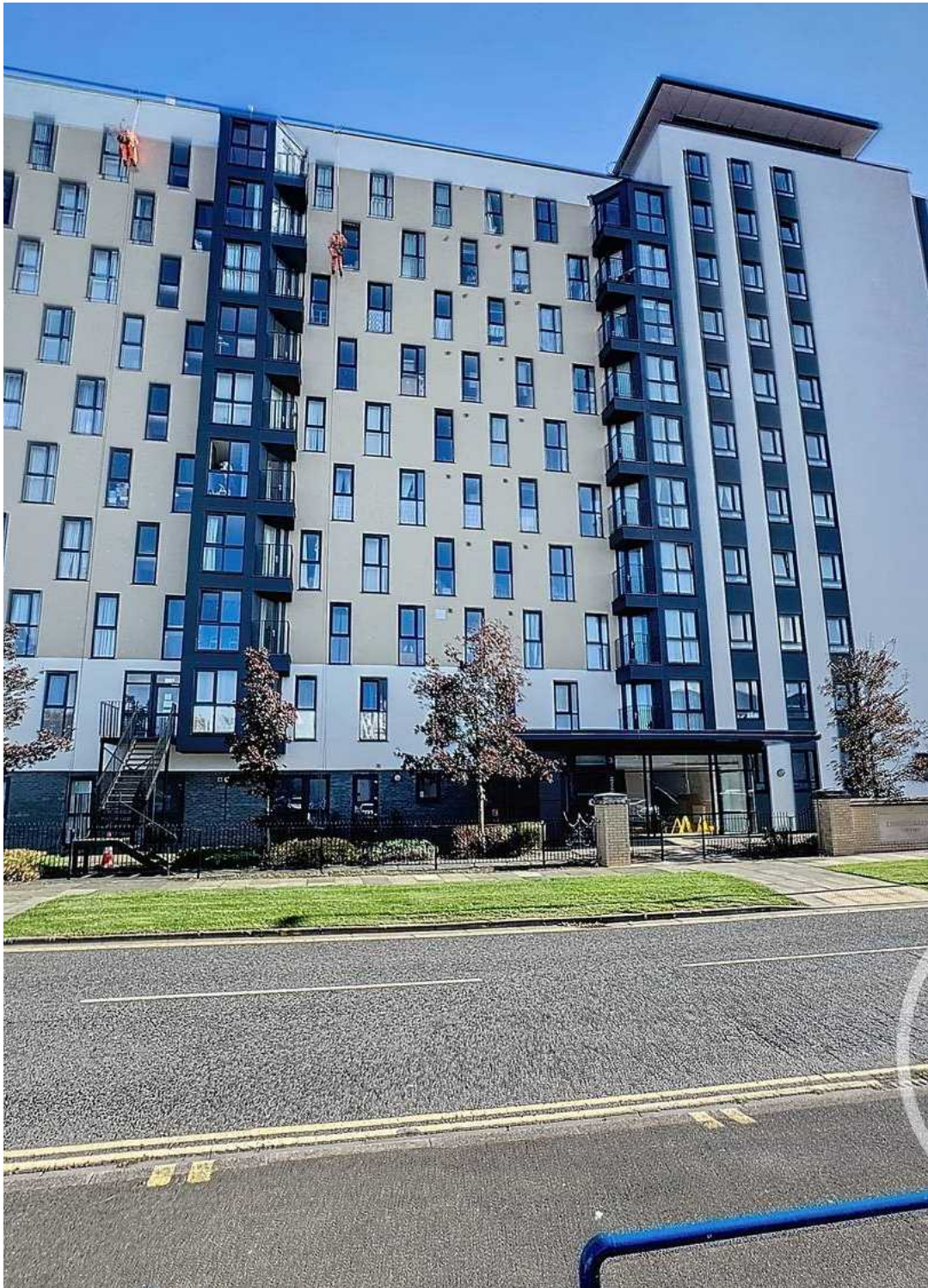




177 Kennedy Gardens, Billingham
Billingham



Guide Price £70,000



177 Kennedy Gardens

Billingham, Billingham

Presenting this Upper Floor Three Bedroom Flat located in a convenient position near Billingham Town Centre. No Onward Chain ensures a smooth and hassle-free transaction. The property boasts lift access for enhanced convenience and features a balcony.

Upon entering, you are greeted by an entrance hall leading to a spacious lounge, ideal for relaxation and entertainment. The practical kitchen, bathroom, and separate WC cater to every-day needs. The property includes three well-proportioned bedrooms providing ample space for comfortable living.

Benefiting from its central location, residents can enjoy easy access to a range of amenities including shops, cafes, and transport links.

While we have made efforts to ensure the accuracy of the information provided in our sales particulars, please note that we have gathered this information from the seller. Should you require further details or clarification on any specific matter, we kindly request you to contact our office where we are ready to gather evidence or conduct further investigations on your behalf.

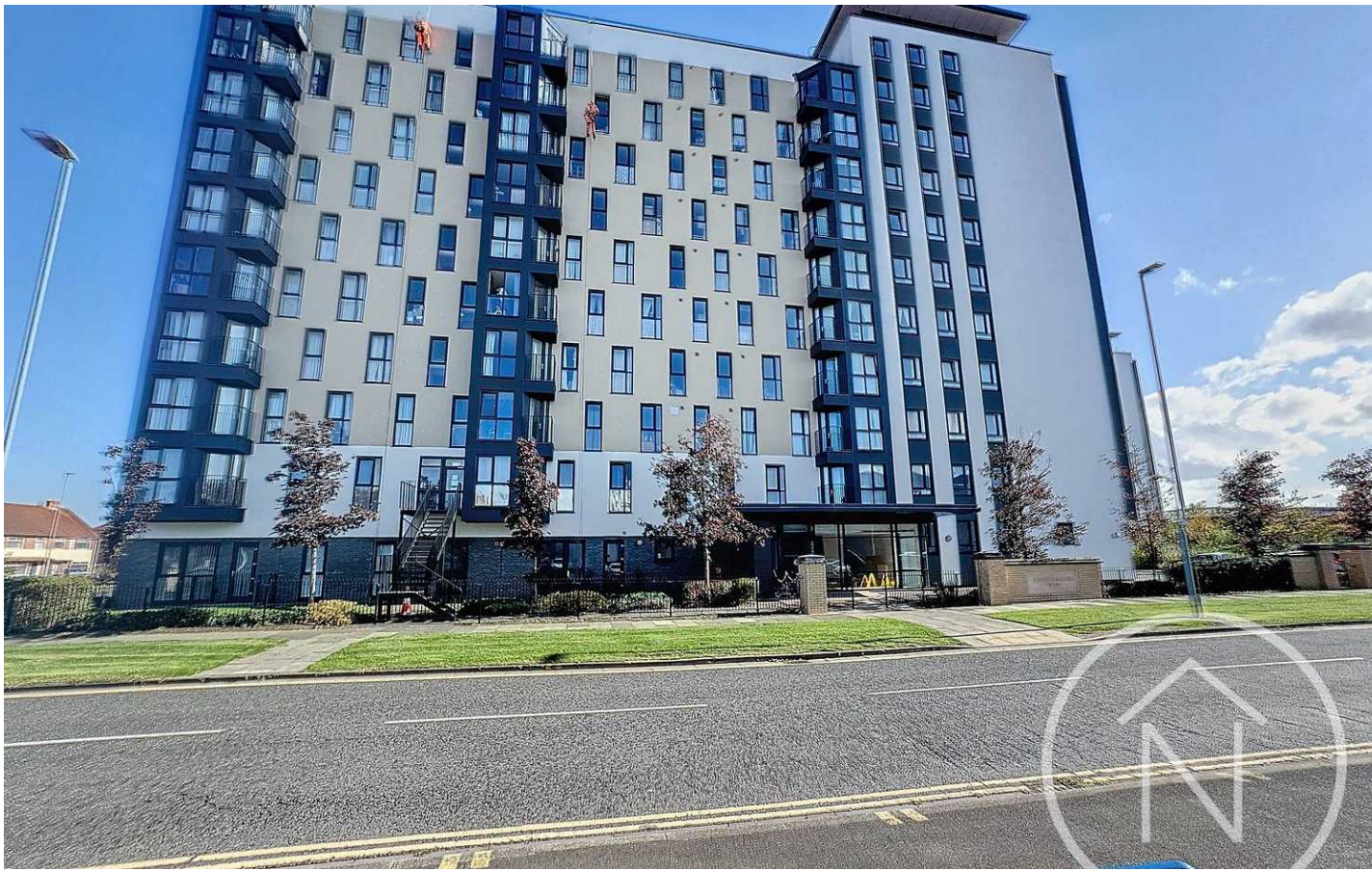
It is important to note that Northgate has not tested any of the services, appliances, or equipment within this property. Therefore, we strongly recommend that prospective buyers arrange for their independent surveys or service reports before finalising the purchase of the property.

Council Tax band: A

Tenure: Leasehold

EPC Energy Efficiency Rating: C

EPC Environmental Impact Rating:



Entrance Hall

Lounge

11' 1" x 20' 9" (3.38m x 6.33m)

Kitchen

8' 2" x 13' 5" (2.50m x 4.10m)

Bathroom

5' 1" x 5' 7" (1.54m x 1.69m)

Wc

3' 10" x 5' 1" (1.18m x 1.54m)

Bedroom One

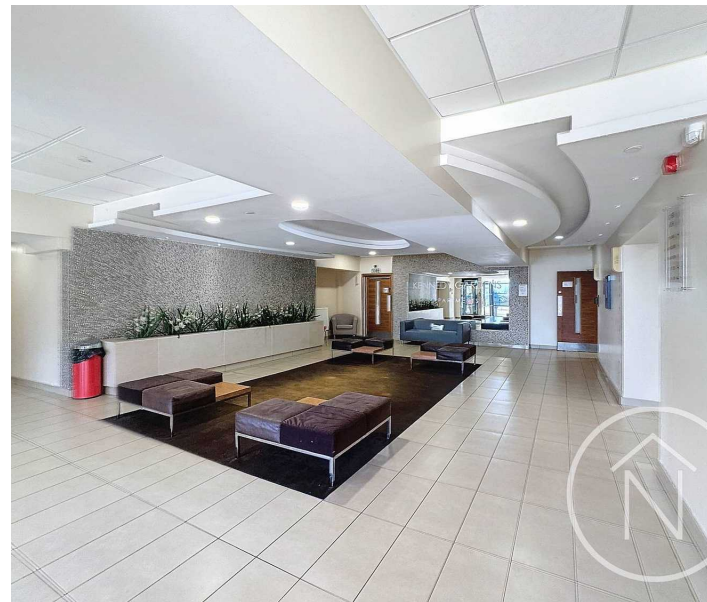
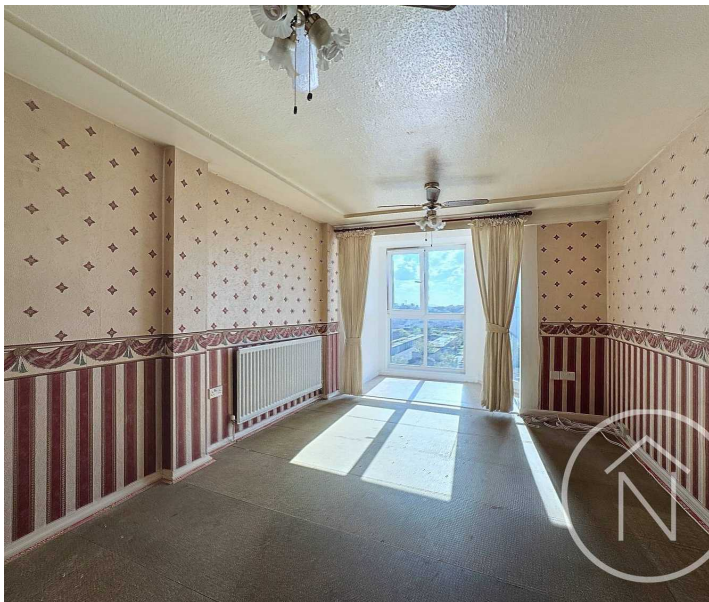
10' 10" x 9' 1" (3.29m x 2.77m)

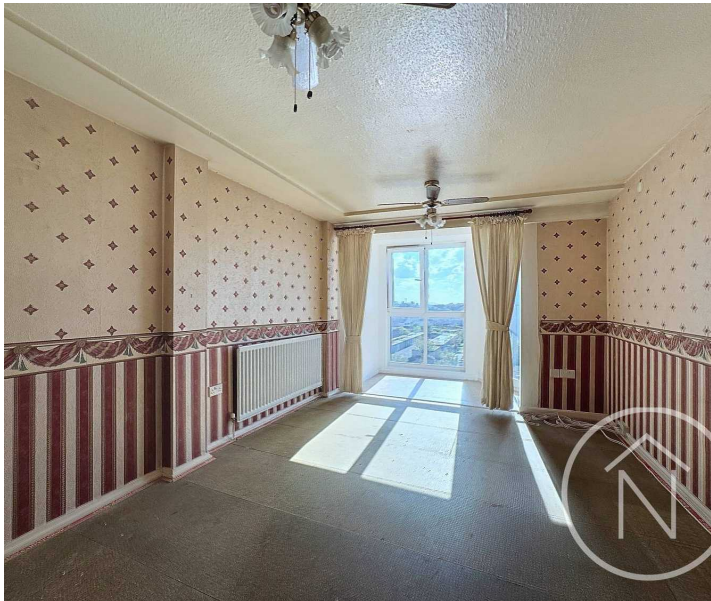
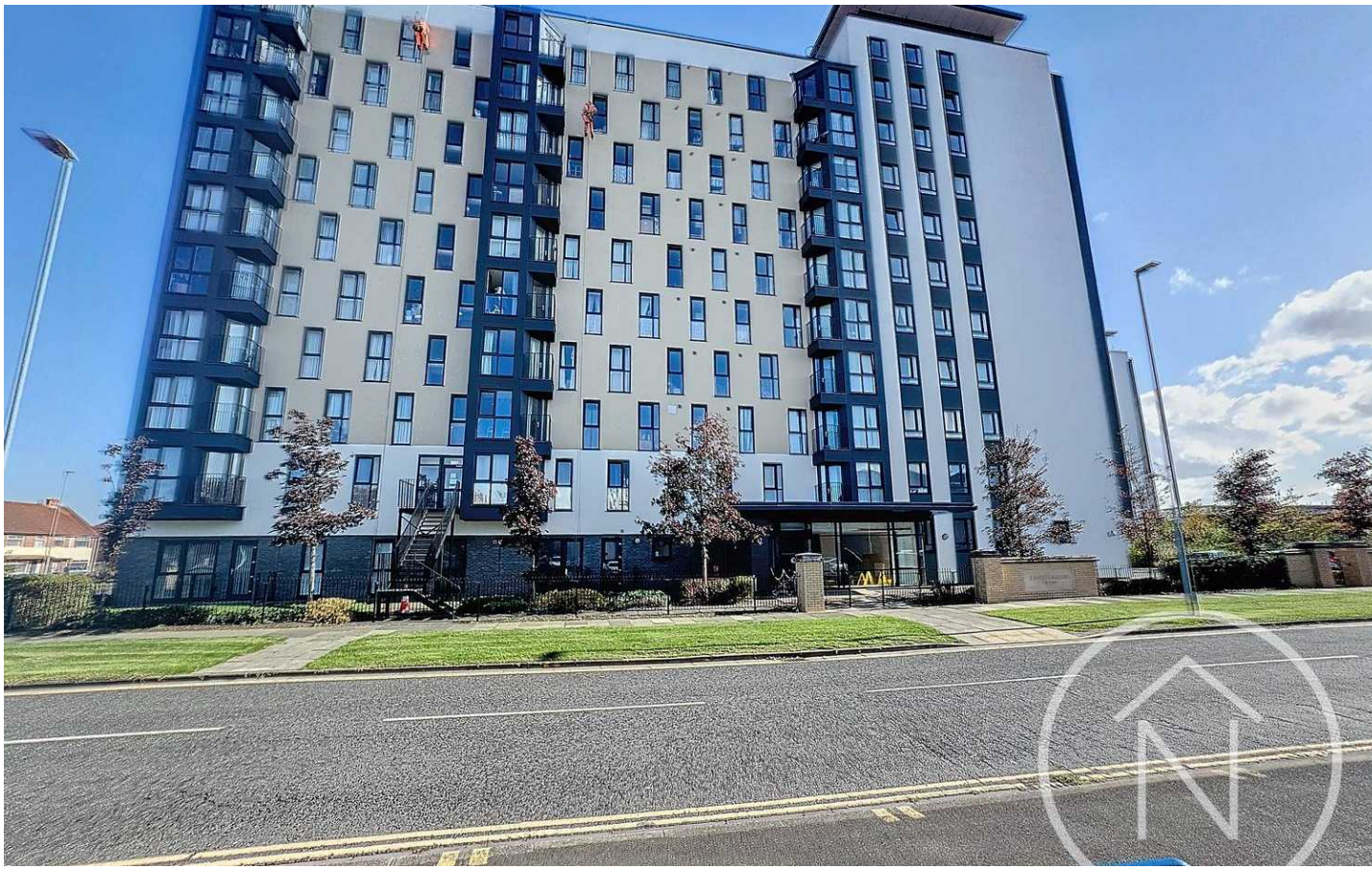
Bedroom Two

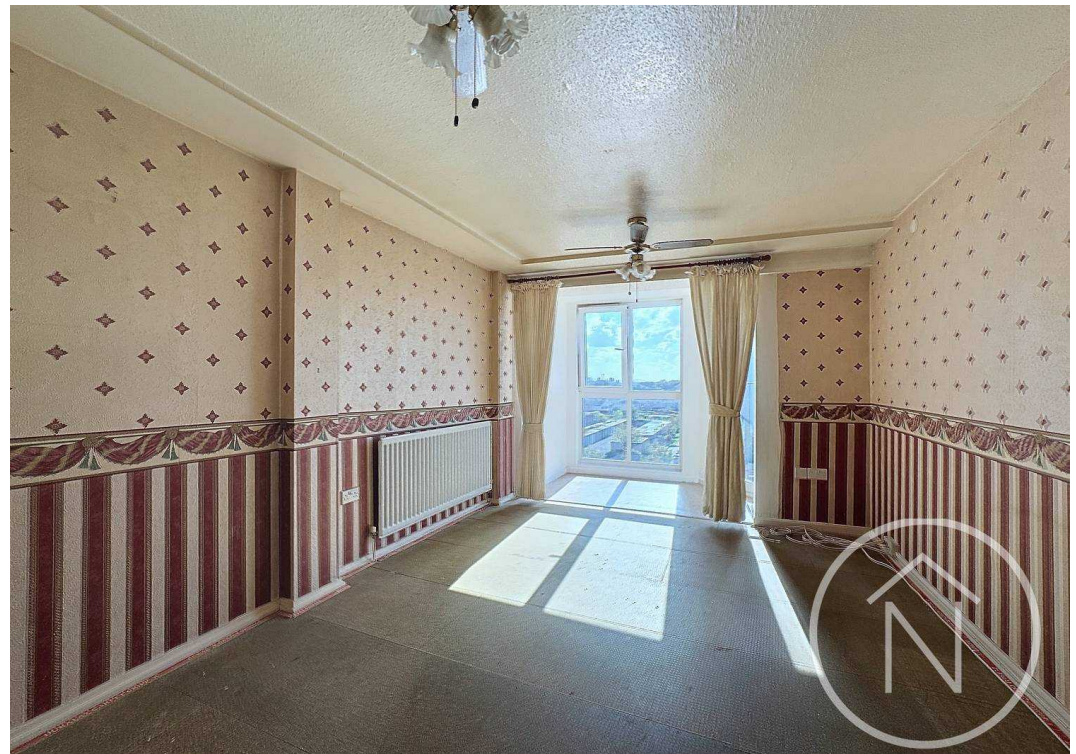
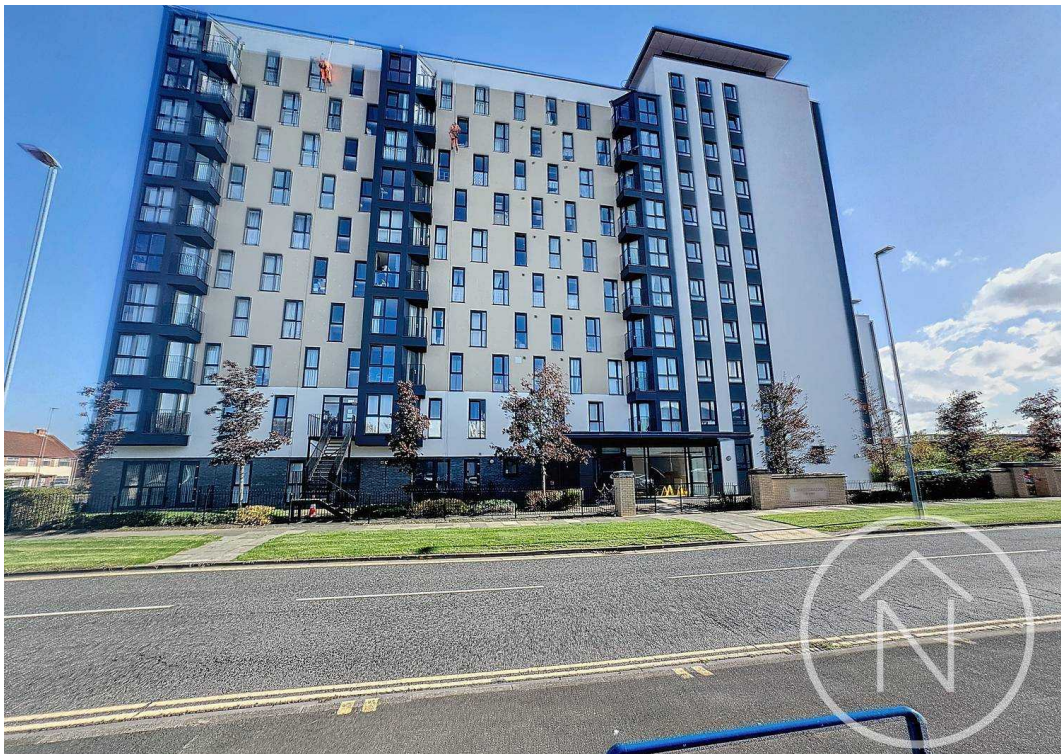
11' 11" x 9' 1" (3.64m x 2.77m)

Bedroom Three

13' 11" x 6' 11" (4.24m x 2.11m)

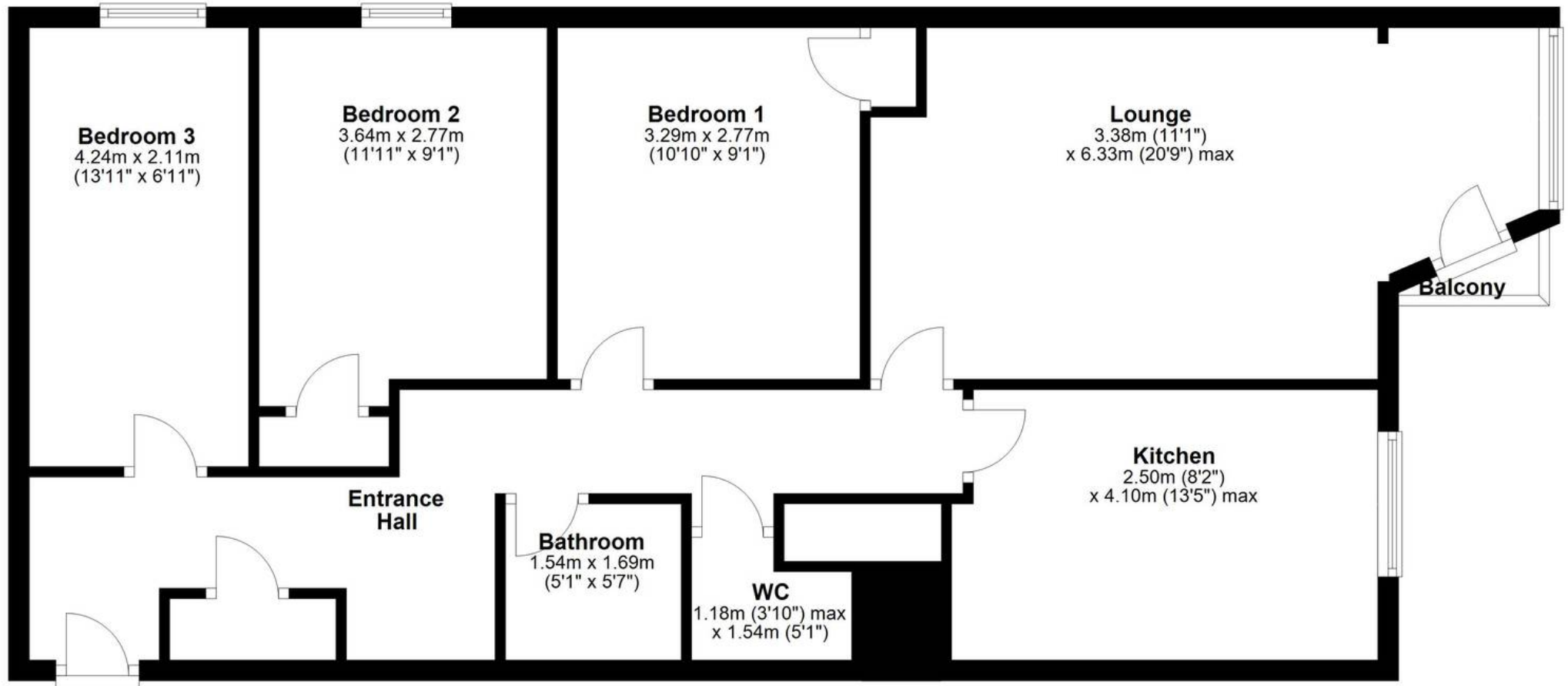






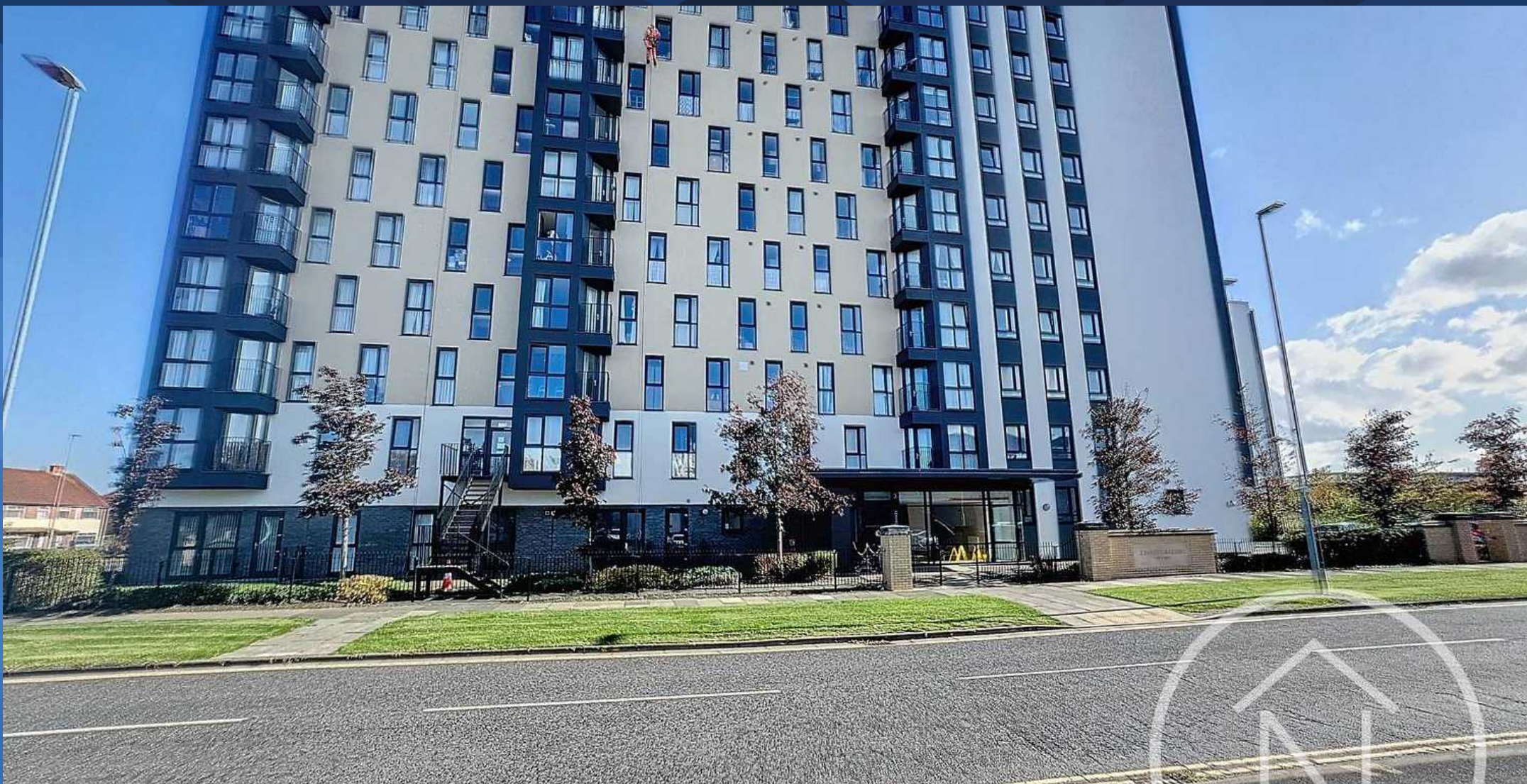
Upper Floor Apartment

Approx. 80.5 sq. metres (866.9 sq. feet)



Total area: approx. 80.5 sq. metres (866.9 sq. feet)

floor plan(s) by Northgate² for illustration purpose only all measurements are approximate.
Plan produced using PlanUp.



Northgate - Teesside

8 Town Square, Billingham - TS23 2LY

01642 813222

billingham@northgates.net

www.northgates.co.uk/

While we have made efforts to ensure the accuracy of the information provided in our sales particulars, please note that we have gathered this information from the seller. Should you require further details or clarification on any specific matter, we kindly request you to contact our office where we are ready to gather evidence or conduct further investigations on your behalf. It is important to note that Northgate has not tested any of the services, appliances, or equipment within this property. Therefore, we strongly recommend that prospective buyers arrange for their independent surveys or service reports before finalising the purchase of the property.