



29 Lightfoot Road, Newton Aycliffe  
Newton Aycliffe



Offers in Region of £110,000



## 29 Lightfoot Road

Newton Aycliffe, Newton Aycliffe

Step into this 3-bedroom end-of-terrace house, perfectly designed for modern family living. This charming property blends comfort and style, creating an inviting space for you to call home.

- **Spacious Lounge:** Enter a generous living area featuring a fire surround with a gas fire, setting the stage for cozy evenings and delightful gatherings with family and friends.
- **Fitted Kitchen:** The well-equipped kitchen boasts a stylish oven, hob, and extractor hood, making it an ideal space for culinary adventures. With ample storage and workspace, it's designed for both everyday meals and special occasions, catering to all your cooking needs.
- **Three Well-Proportioned Bedrooms:** Retreat to three inviting bedrooms, each providing a tranquil sanctuary for relaxation. These versatile spaces can effortlessly adapt to your family's needs, serving as cozy bedrooms, a guest room, or a productive home office.
- **Family Bathroom:** Thoughtfully designed for convenience, the family bathroom includes all essential fixtures, ensuring comfort for the whole household.
- **Externally:** The charming front garden enhances curb appeal, The rear garden shines as a low-maintenance oasis, perfect for outdoor dining, relaxing, or enjoying the sunshine.

This delightful home combines comfort, practicality, and style, making it the ideal setting for creating lasting memories. Don't miss your chance to make this wonderful property your own!

Council Tax band: A

Tenure: Freehold

- Three Bed End Terrace \*\*No onward Chain\*\*



**Entrance**

6'0" x 3'7" (1.84 x 1.09 m)

**Utility**

7'8" x 6'1" (2.34 x 1.87 m)

**Hallway**

4'4" x 4'7" (1.34 x 1.42 m)

**Lounge**

11'3" x 19'3" (3.44 x 5.87 m)

**Kitchen**

11'0" x 8'9" (3.36 x 2.69 m)

**Bedroom 1**

11'3" x 10'8" (3.44 x 3.27 m)

**Bedroom 2**

7'11" x 13'7" (2.43 x 4.16 m)

**Bedroom 3**

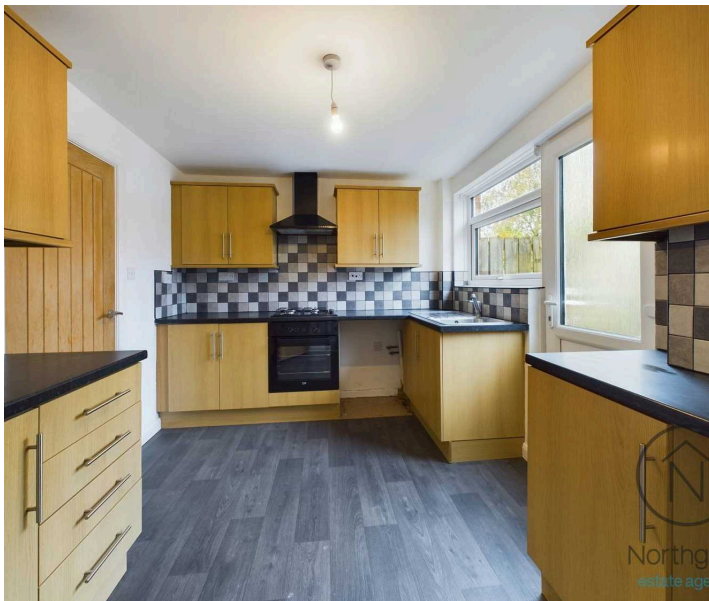
8'7" x 8'5" (2.62 x 2.57 m)

**Landing**

8'8" x 3'0" (2.64 x 0.92 m)

**Bathroom**

8'8" x 3'0" (2.64 x 0.92 m)





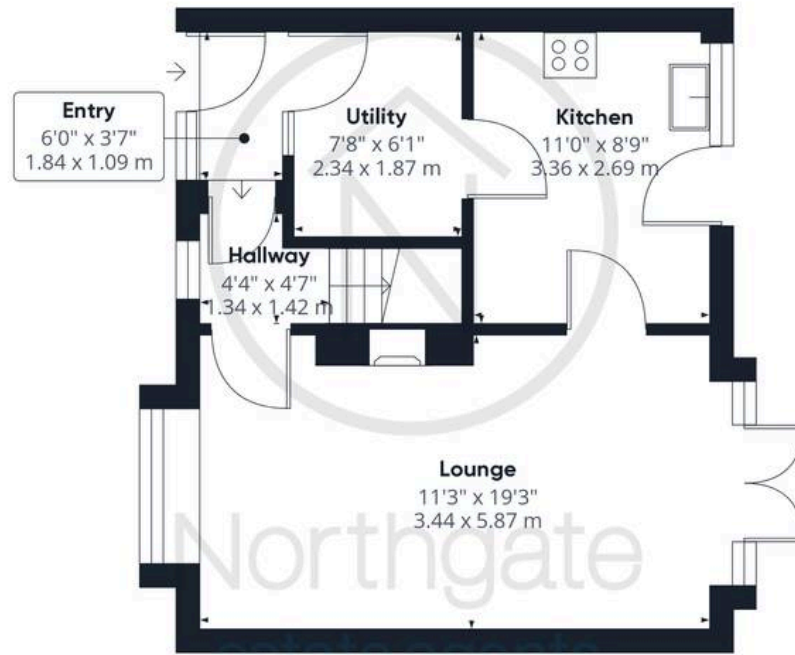
FRONT GARDEN

REAR GARDEN









Ground Floor

Approximate total area<sup>(1)</sup>

825.49 ft<sup>2</sup>

76.69 m<sup>2</sup>



Floor 1

(1) Excluding balconies and terraces

While every attempt has been made to ensure accuracy, all measurements are approximate, not to scale. This floor plan is for illustrative purposes only.

Calculations are based on RICS IPMS 3C standard.

GIRAFFE 360



## Northgate - County Durham

Northgate Estate Agents, Suite 3 - DL5 4DH

01325 728333 • [info@northgates.net](mailto:info@northgates.net) • [www.northgates.co.uk/](http://www.northgates.co.uk/)



These particulars do not constitute, nor constitute part of, an offer or contract. No warranties are provided. Verify details through inspection. Northgate estate agents, nor any person in their employment has any authority to make or give any representation or warranty whatever in the relation to this property. All measurements are approximate.