



Honister Place, Newton Aycliffe

Newton Aycliffe



In Excess of £65,000



49 Honister Place

Newton Aycliffe, Newton Aycliffe

For Sale With No Onward Chain This Three Bedroom Terrace Home. The Property Benefits From Gas Central Heating. Ideally Suited To Both Investors And First Time Buyers. In Brief, The Property Comprises:

Entrance Hall: Upon entering the property, you are welcomed into a spacious entrance hall, providing access to the main living areas.

Lounge Open Plan to Dining Room: The property features a generous lounge area that seamlessly flows into the dining room, creating a versatile space for entertaining and relaxation. window to front and patio door to rear allow for ample natural light.

Well-appointed kitchen is equipped with built-in oven and hob. Ground floor W.C.

The property offers three bedrooms, providing plenty of room for a growing family or accommodating guests and a family bathroom (Note Bedroom two provides access to bedroom three).

This property comes with the added convenience of off-street parking to rear. Additionally an outbuilding offering further storage space.

In summary, this spacious three-bedroom terrace home presents an excellent opportunity for investors and first-time buyers alike. With gas central heating, off-street parking, this property offers both comfort and convenience. Don't miss the chance to make this house your home. Contact us today to arrange a viewing.

Council Tax band: A

Tenure: Freehold



Hallway:

11'10" x 3'5" (3.62 x 1.06 m)

WC:

4'8" x 2'6" (1.44 x 0.77 m)

Kitchen:

11'0" x 9'10" (3.37 x 3.00 m)

Porch:

4'0" x 8'4" (1.23 x 2.55 m)

Lounge / Dining Room:

23'6" x 9'11" (7.16 x 3.04 m)

First Floor:

Bedroom 1:

11'10" x 9'10" (3.63 x 3.01 m)

Bedroom 2:

10'2" x 9'11" (3.12 x 3.02 m)

Bedroom 3:

9'4" x 9'10" (2.85 x 3.02 m)

Bathroom:

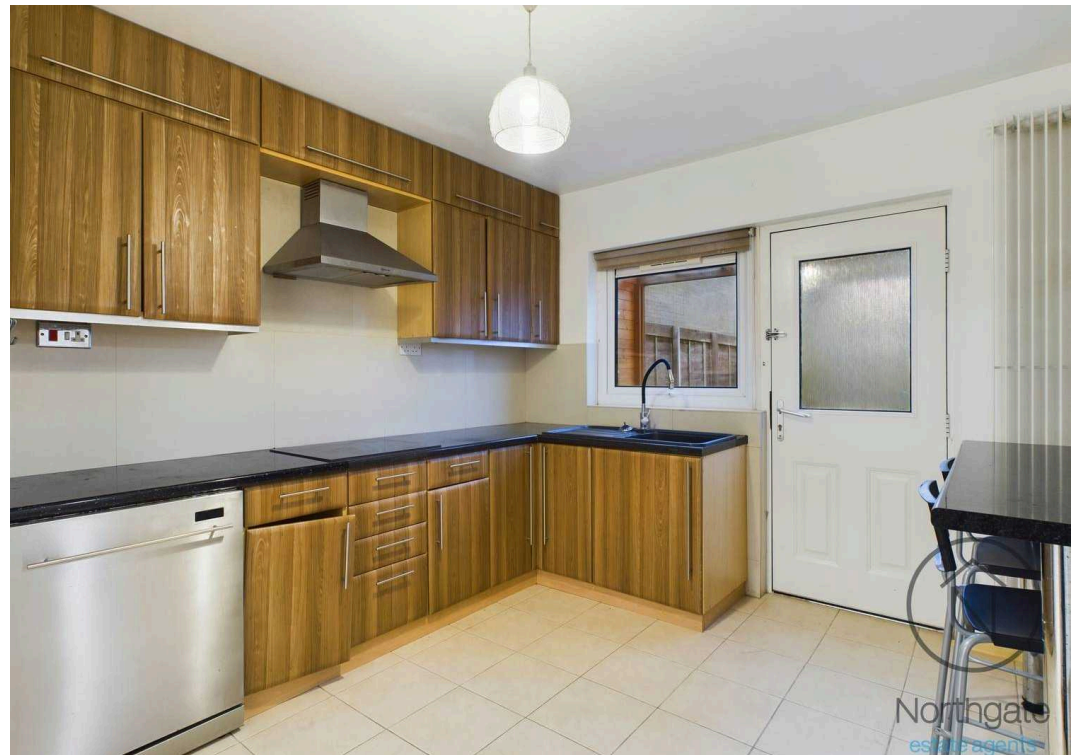
8'10" x 6'8" (2.70 x 2.03 m)



GARDEN

ON STREET





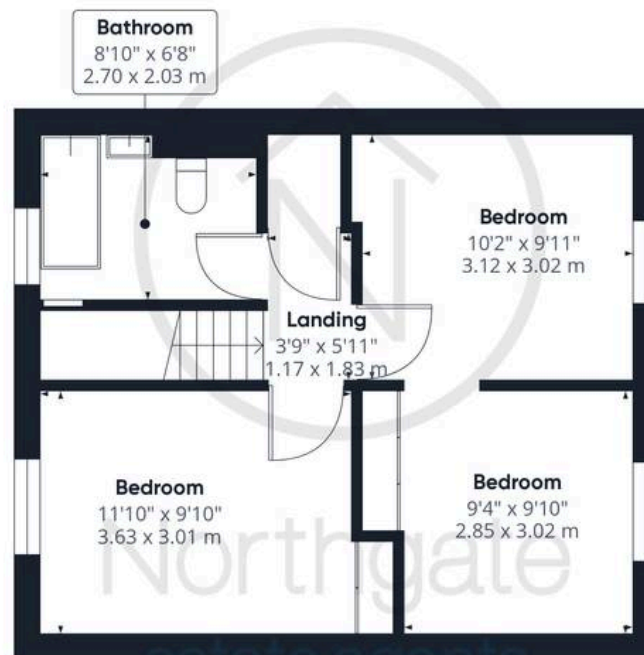




Northgate
estate agents



Ground Floor



Floor 1

Approximate total area⁽¹⁾

906.54 ft²

84.22 m²

(1) Excluding balconies and terraces

While every attempt has been made to ensure accuracy, all measurements are approximate, not to scale. This floor plan is for illustrative purposes only.

Calculations are based on RICS IPMS 3C standard.

GIRAFFE360



Northgate - County Durham

Northgate Estate Agents, Suite 3 - DL5 4DH

01325 728333 • info@northgates.net • www.northgates.co.uk/



These particulars do not constitute, nor constitute part of, an offer or contract. No warranties are provided. Verify details through inspection. Northgate estate agents, nor any person in their employment has any authority to make or give any representation or warranty whatever in the relation to this property. All measurements are approximate.