




Northgate
estate agents
For Sale
01325 327566
www.northgates.co.uk



Hawkshead Place, Newton Aycliffe

In Excess of **£115,000 And £125,000**



92 Hawkshead Place

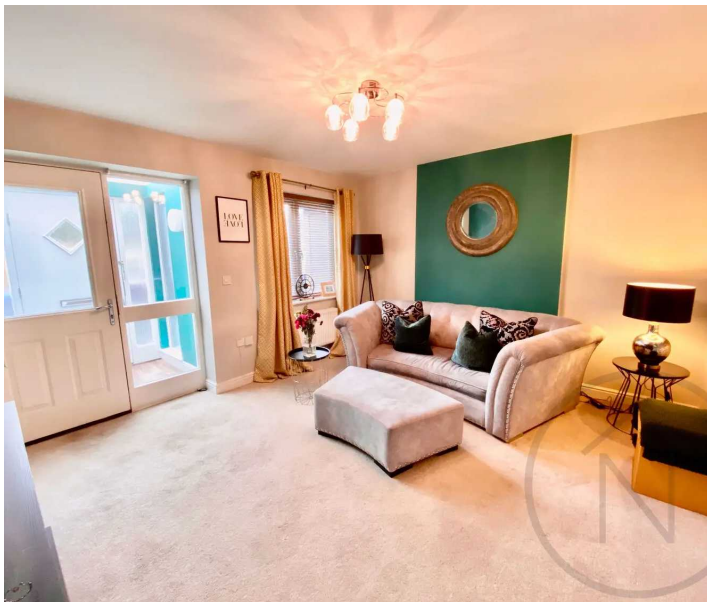
Newton Aycliffe, Newton Aycliffe

Offers Invited between £115,000-£125,000.
Charming 3-bed mid-terrace townhouse near Newton Aycliffe Town Centre. UPVC double glazing, gas central heating. Porch, lounge, kitchen/diner, master with en-suite, 2 double bedrooms, family bathroom, rear garden. Shared ownership available. Must meet Government's criteria for Affordable Home Ownership. Call for more info/viewing. Council Tax band: C

Tenure: Freehold

EPC Energy Efficiency Rating:

EPC Environmental Impact Rating:



Entrance Porch

4' 3" x 5' 3" (1.29m x 1.60m)

Lounge

11' 8" x 13' 2" (3.55m x 4.01m)

Hallway

Kitchen

11' 1" x 13' 0" (3.38m x 3.96m)

Wc

3' 3" x 6' 2" (0.99m x 1.88m)

Landing

12' 0" x 6' 0" (3.65m x 1.83m)

Bedroom 2

6' 10" x 13' 3" (2.08m x 4.04m)

Bedroom 3

7' 3" x 13' 2" (2.21m x 4.01m)

Bathroom

6' 9" x 6' 3" (2.06m x 1.90m)

Landing

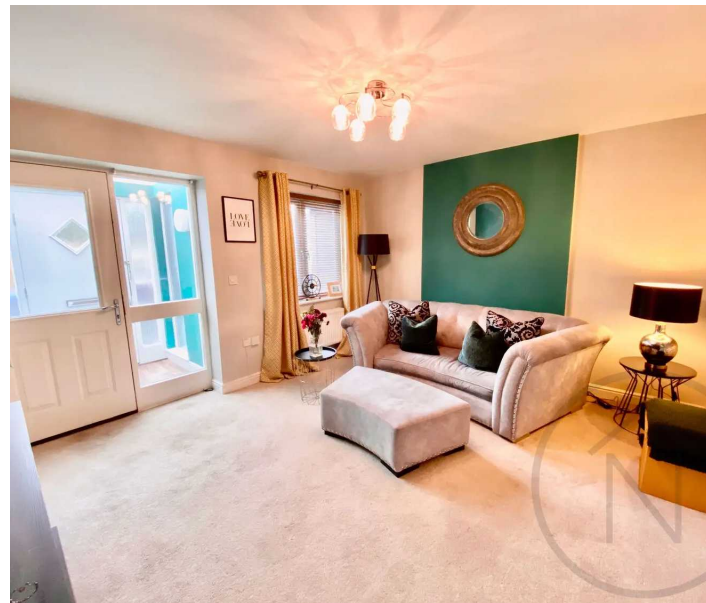
4' 11" x 3' 0" (1.50m x 0.91m)

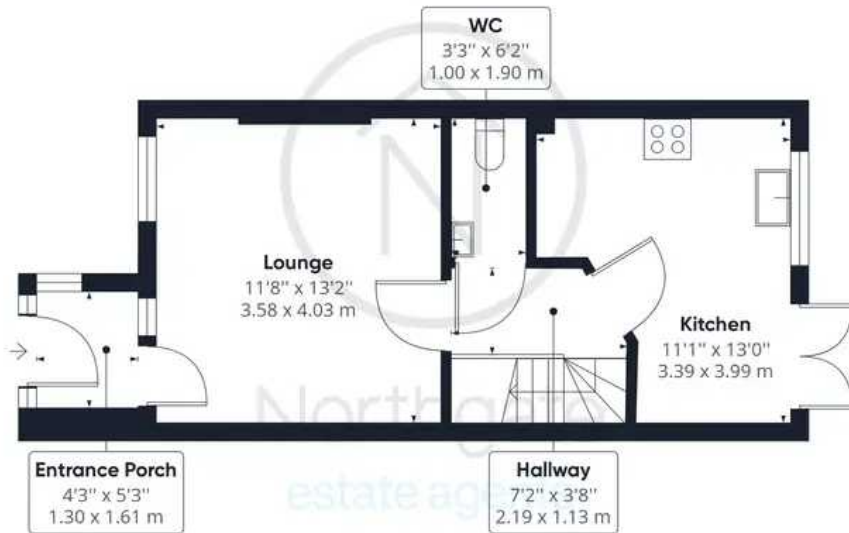
Master Bedroom

11' 9" x 9' 11" (3.58m x 3.02m)

En-Suite

5' 0" x 5' 10" (1.52m x 1.78m)





Ground Floor



Floor 1



Floor 2



Approximate total area⁽¹⁾

931.00 ft²

86.49 m²

(1) Excluding balconies and terraces

While every attempt has been made to ensure accuracy, all measurements are approximate, not to scale. This floor plan is for illustrative purposes only.



