



Lewes Way, Billingham



Offers Invited Between £100,000 And £110,000



Lewes Way

Billingham

Offers Invited Between £100,000 to £110,000

Situated close to Cowpen Bewley Woodland Park, this stunning three-bedroom end-terrace property offers a modern interior throughout, making it the ideal home for first-time buyers and families alike. The property benefits from a south-facing rear garden, perfect for enjoying sunny afternoons and al fresco dining. Boasting UPVC double glazing and gas central heating, this home ensures comfort and energy efficiency all year round.

Externally, the property benefits from a low-maintenance garden space, ideal for outdoor entertaining and relaxation. Additionally, the property's close proximity to local schools, bus routes, and shops provides convenience and ease of access to amenities. Don't miss the opportunity to make this property your own.

While we have made efforts to ensure the accuracy of the information provided in our sales particulars, please note that we have gathered this information from the seller. Should you require further details or clarification on any specific matter, we kindly request you to contact our office where we are ready to gather evidence or conduct further investigations on your behalf.

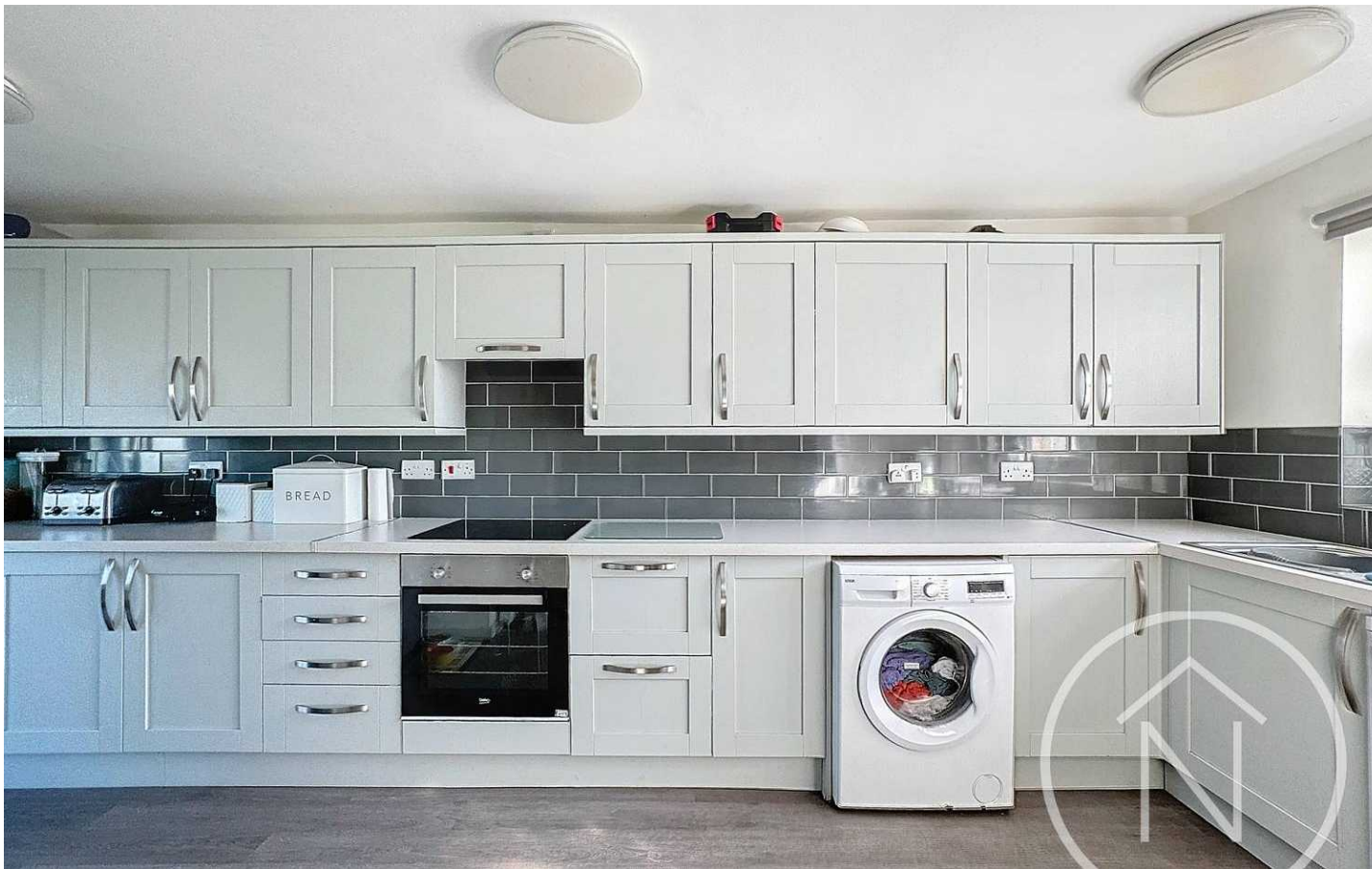
It is important to note that Northgate has not tested any of the services, appliances, or equipment within this property. Therefore, we strongly recommend that prospective buyers arrange for their independent surveys or service reports before finalising the purchase of the property.

Council Tax band: A

Tenure: Freehold

EPC Energy Efficiency Rating: E

EPC Environmental Impact Rating: E



Porch

3' 5" x 7' 8" (1.03m x 2.34m)

Kitchen

21' 8" x 10' 7" (6.61m x 3.23m)

Lounge

21' 8" x 10' 9" (6.61m x 3.27m)

Ground Floor Wc

Conservatory

9' 5" x 12' 9" (2.87m x 3.89m)

Landing

Bathroom

5' 11" x 7' 8" (1.81m x 2.33m)

Bedroom One

12' 8" x 10' 11" (3.87m x 3.32m)

Bedroom Two

15' 6" x 7' 9" (4.73m x 2.37m)

Bedroom Three

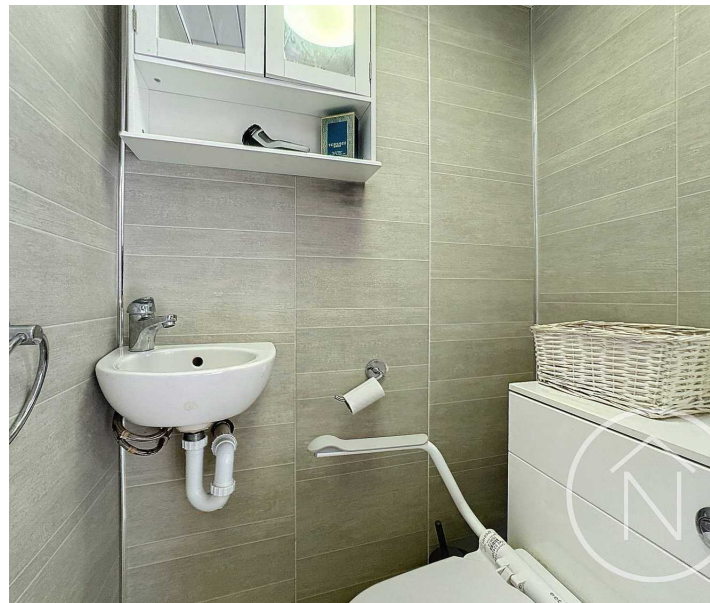
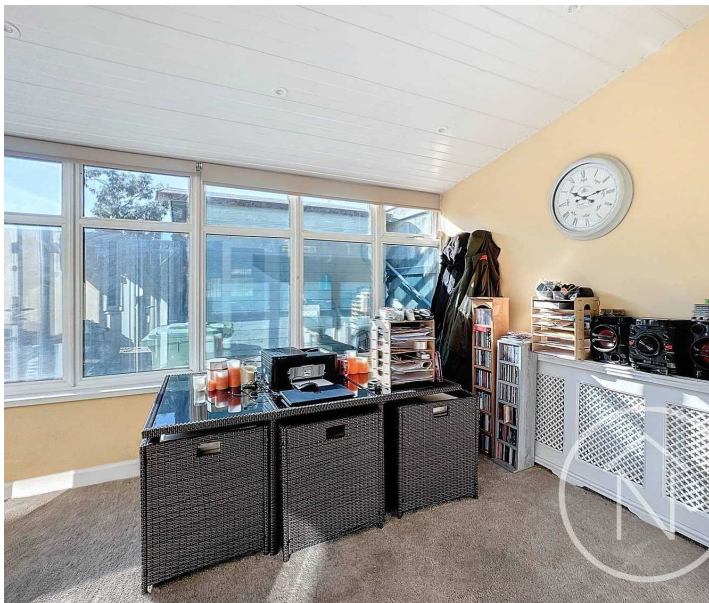
8' 10" x 7' 11" (2.70m x 2.42m)

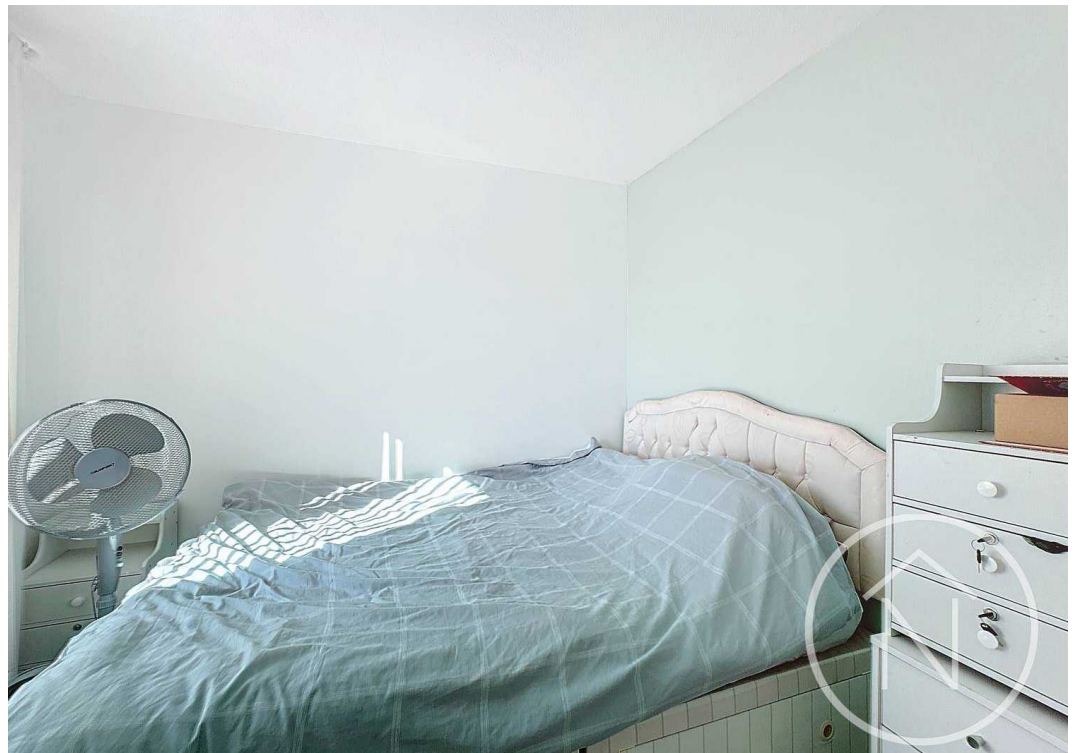
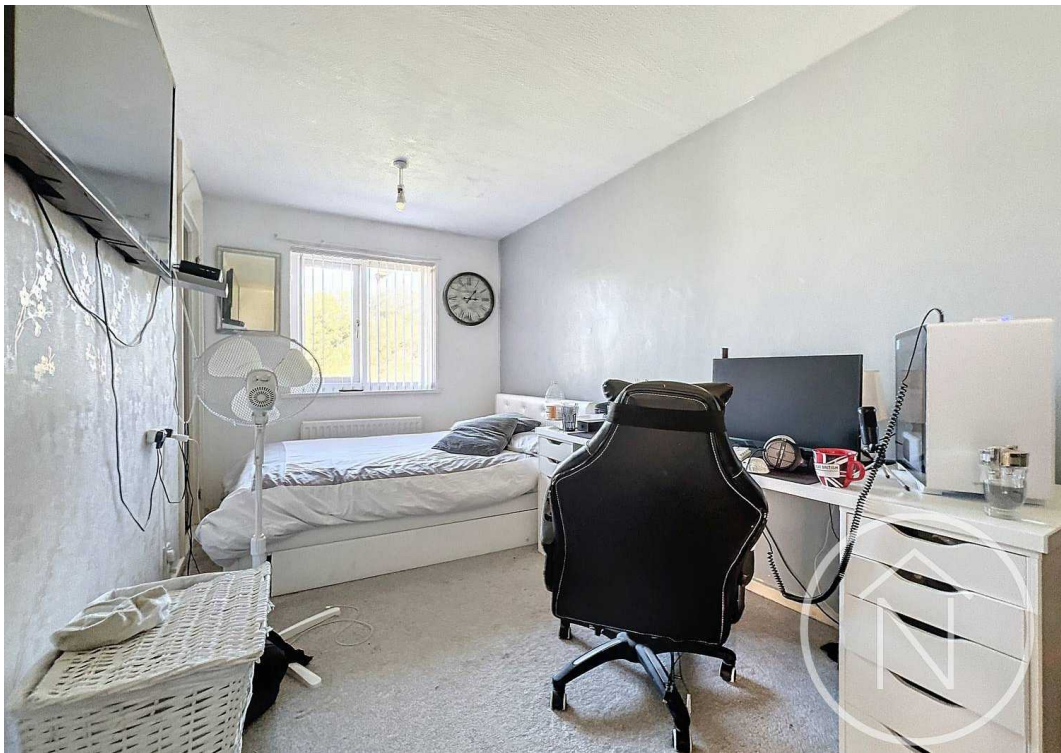
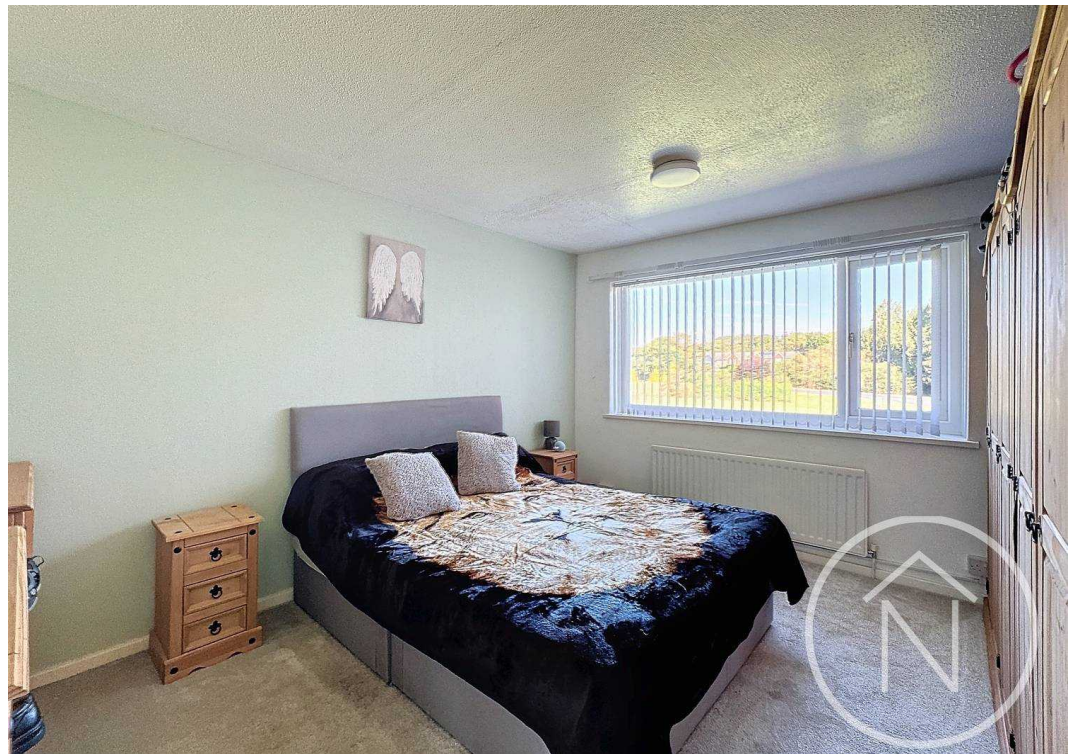
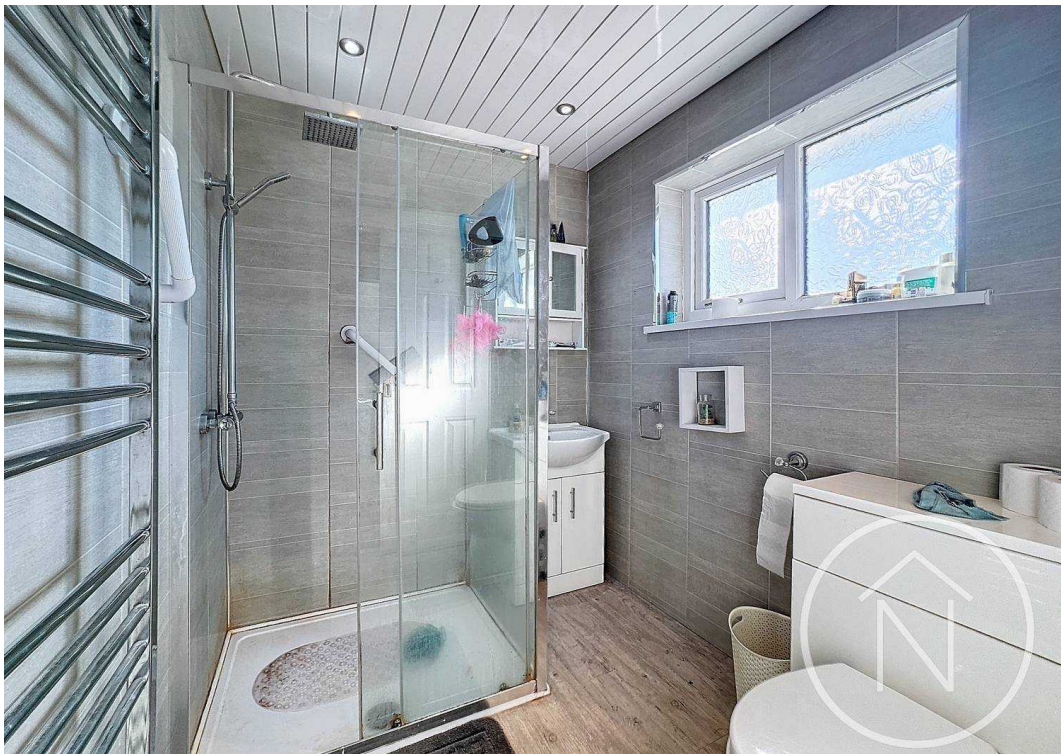


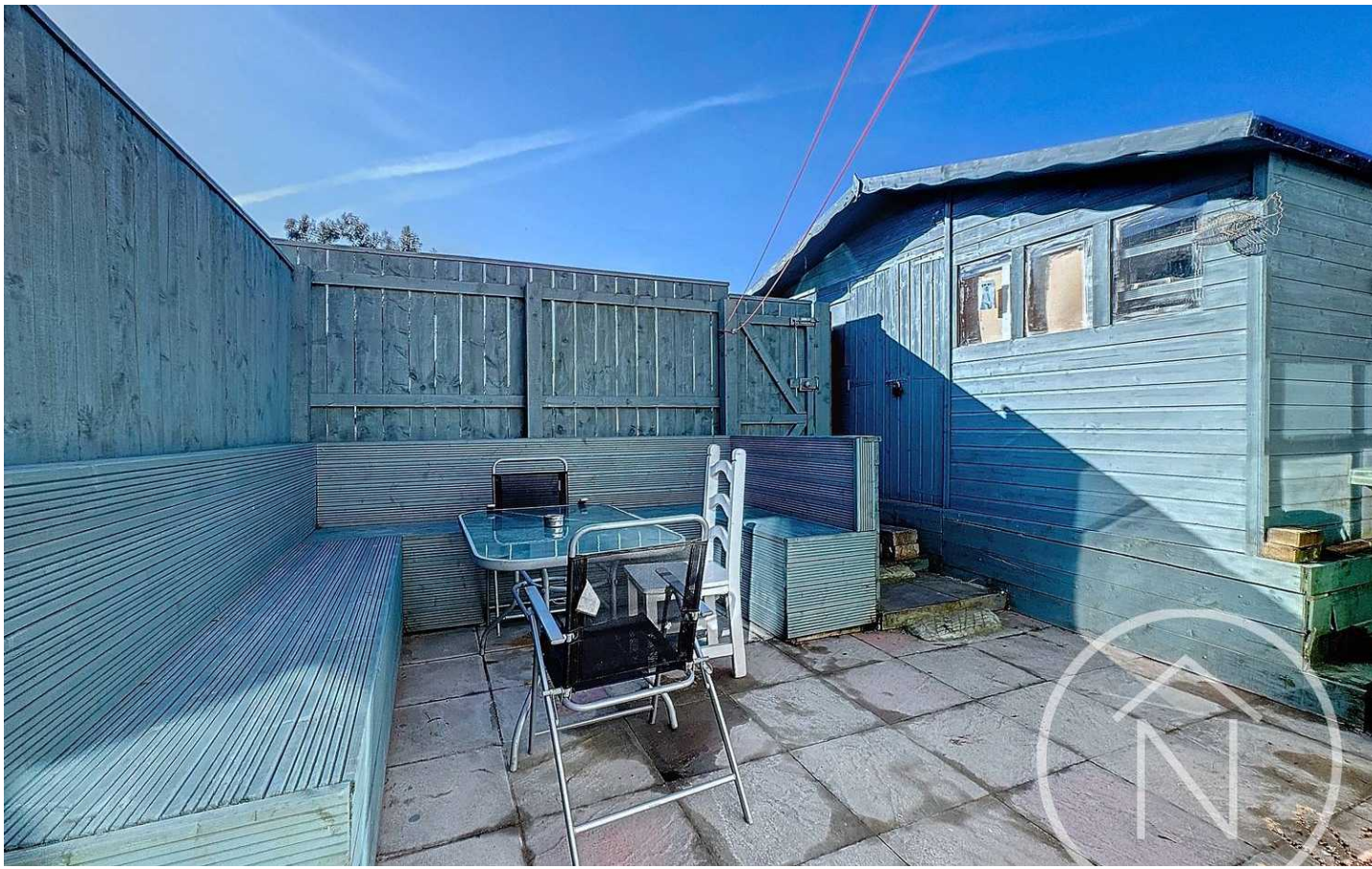


GARDEN

ON STREET

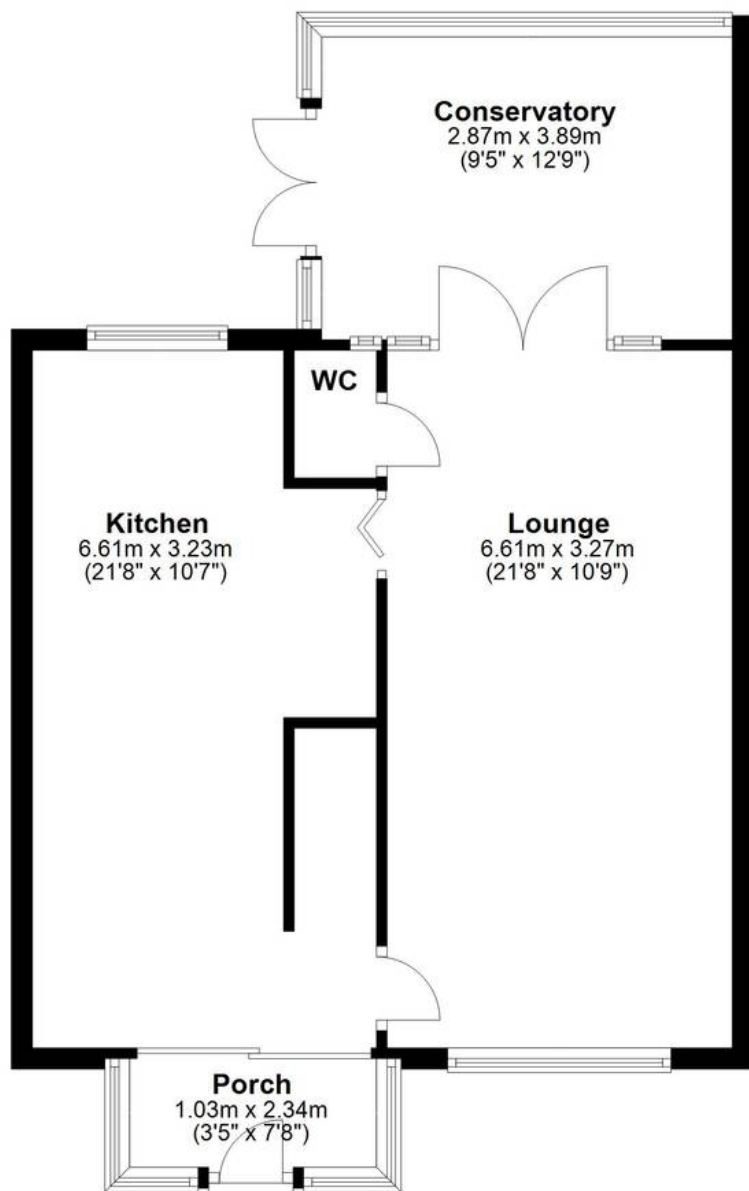






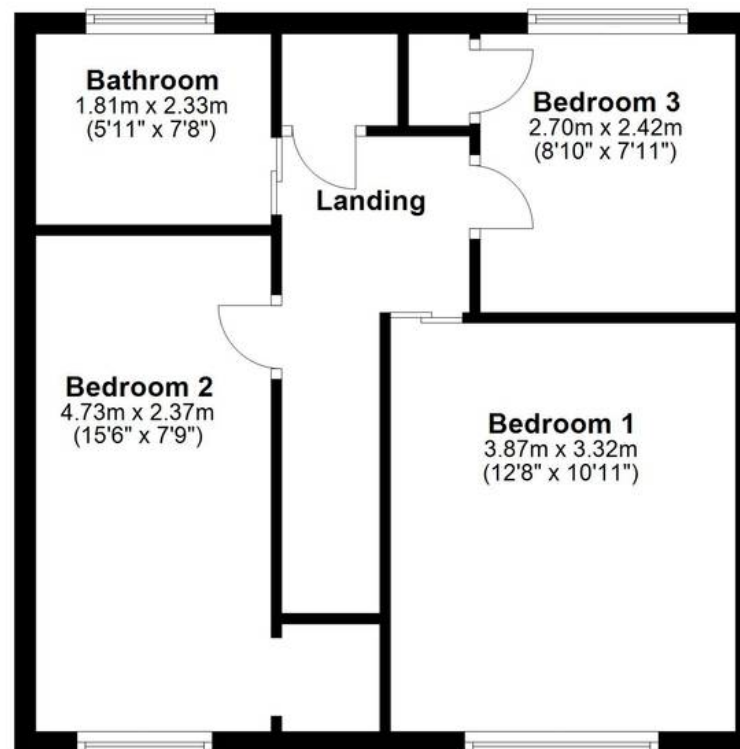
Ground Floor

Approx. 55.2 sq. metres (594.2 sq. feet)



First Floor

Approx. 45.1 sq. metres (485.2 sq. feet)



Total area: approx. 100.3 sq. metres (1079.3 sq. feet)

floor plan(s) by Northgate² for illustration purpose only all measurements are approximate.
Plan produced using PlanUp.



Northgate - Teesside

8 Town Square, Billingham - TS23 2LY

01642 813222

billingham@northgates.net

www.northgates.co.uk/

While we have made efforts to ensure the accuracy of the information provided in our sales particulars, please note that we have gathered this information from the seller. Should you require further details or clarification on any specific matter, we kindly request you to contact our office where we are ready to gather evidence or conduct further investigations on your behalf. It is important to note that Northgate has not tested any of the services, appliances, or equipment within this property. Therefore, we strongly recommend that prospective buyers arrange for their independent surveys or service reports before finalising the purchase of the property.