



Bloomesley Close, Newton Aycliffe

Newton Aycliffe



In Excess of £235,000



Bloomesley Close

Newton Aycliffe, Newton Aycliffe

This immaculate three-bedroom detached family home offers a perfect blend of modern living and comfort. Upon entering, a spacious entrance hall welcomes you, leading to a ground floor W.C. The inviting living room features a cosy log-burning stove, ideal for relaxing evenings. The heart of the home is the modern fitted kitchen complete with integrated appliances, a breakfast bar, and open-plan dining area, creating a seamless flow. The property boasts an ensuite shower in addition to a stunning fitted bathroom suite, ensuring convenience for the whole family. For those who love the outdoors, the south-facing rear garden is a haven with a patio area, lush lawn, and a charming summerhouse. The front of the property offers an open-plan lawned garden with shrubs and trees, complemented by a double-length driveway and a single garage, providing ample parking space and storage options.

This property offers a blend of indoor comfort and outdoor charm, making it a must-see for those wishing to find their dream family home.

Council Tax band: D

Tenure: Freehold



- Immaculate Three Bedroom Detached Family Home
- Spacious living room with log burner, modern kitchen with breakfast bar.
- Ensuite shower room and stunning bathroom.
- South-facing garden with patio, lawn, and summerhouse.
- Double-length driveway and single garage.
- Energy performance rating: TBC.

Entrance Hall:

4'0" x 9'10" (1.11 x 3.02 m)

Living Room:

10'0" x 16'8" (3.13 x 5.09 m)

Kitchen / Dining:

10'0" x 16'8" (3.15 x 5.10 m)

WC:

4'0" x 4'1" (1.19 x 1.26 m)

First Floor:

Bedroom One:

11'0" x 11'3" (3.40 x 3.44 m)

Ensuite Shower Room:

5'9" x 5'3" (1.74 x 1.62 m)

Bedroom Two:

11'0" x 9'8" (3.26 x 2.96 m)

Bedroom Three:

11'0" x 6'9" (3.22 x 2.07 m)

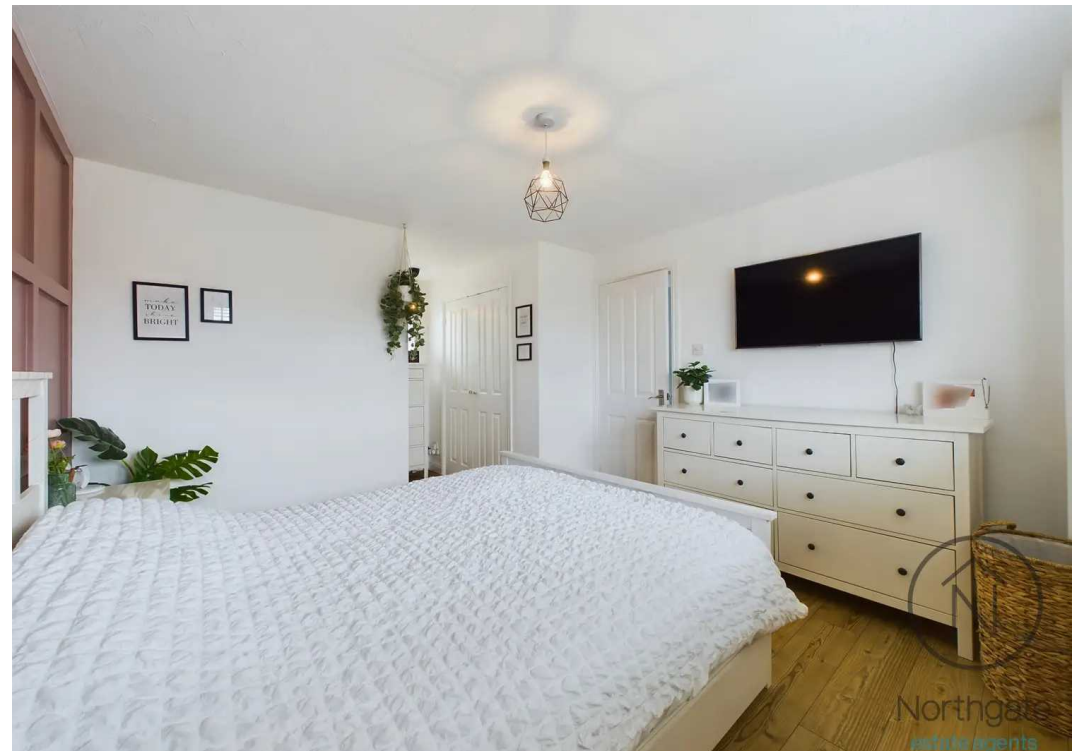
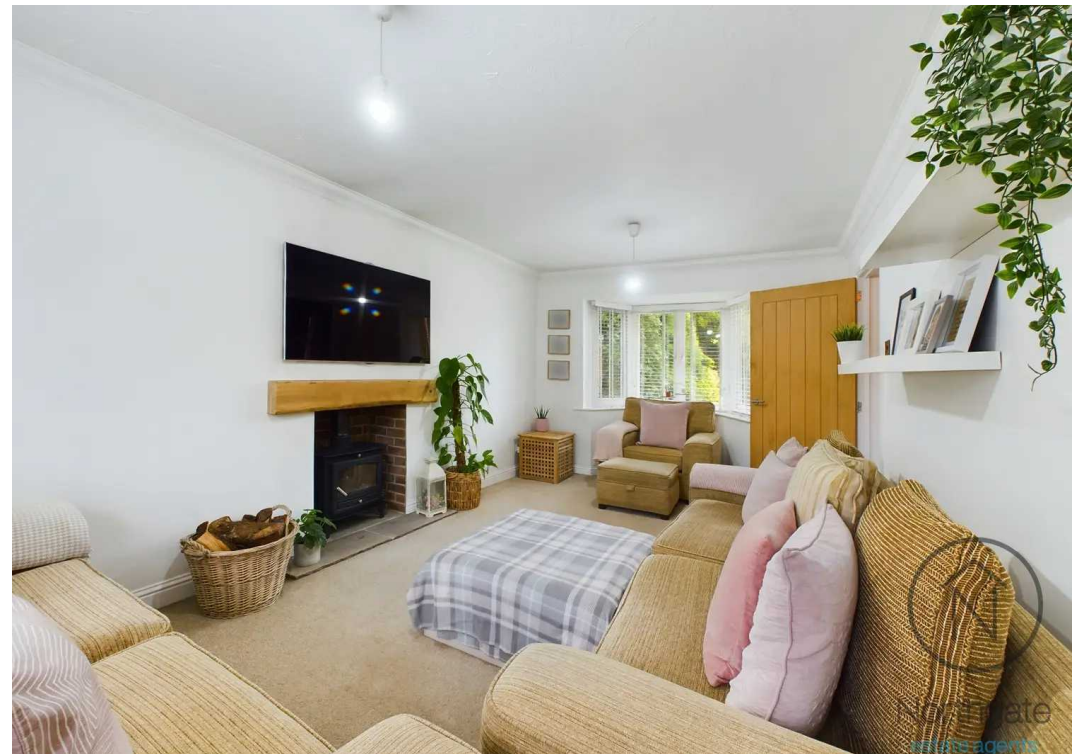
Bathroom:

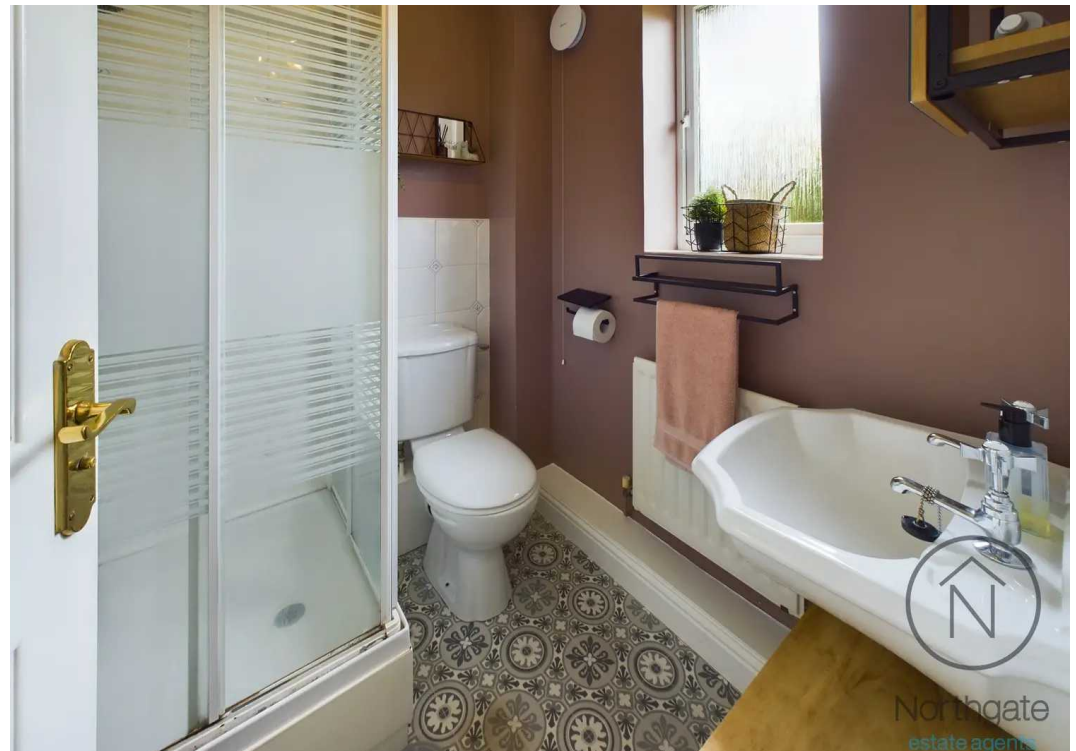
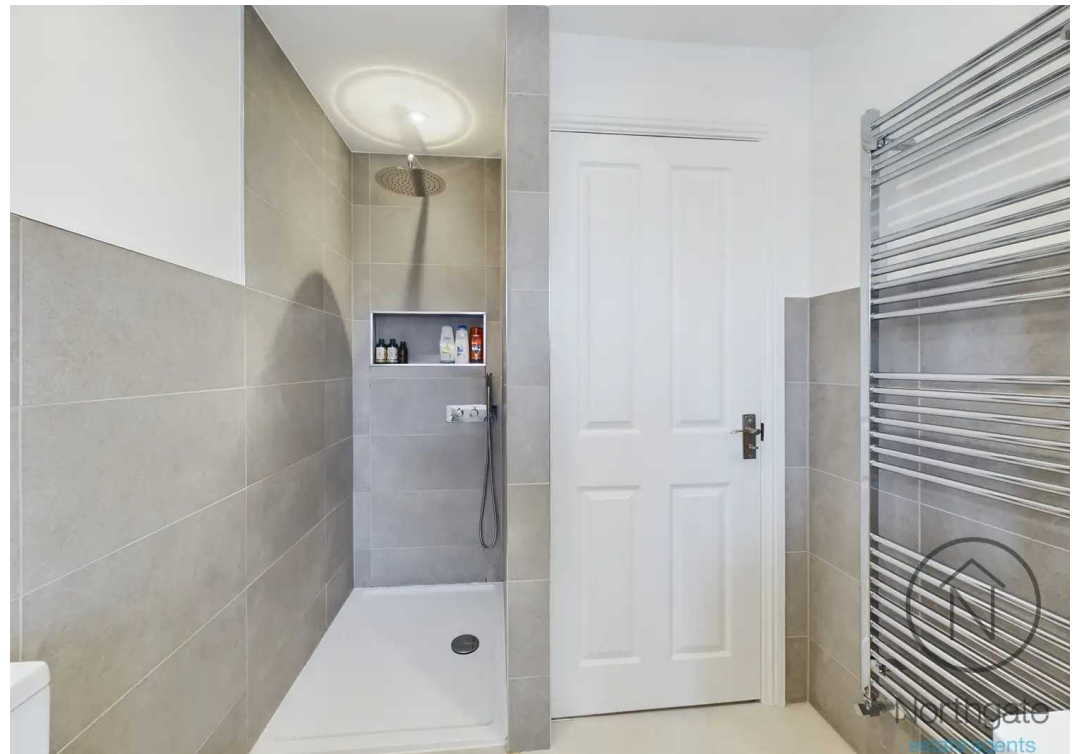
6'0" x 5'6" (1.87 x 1.67 m)

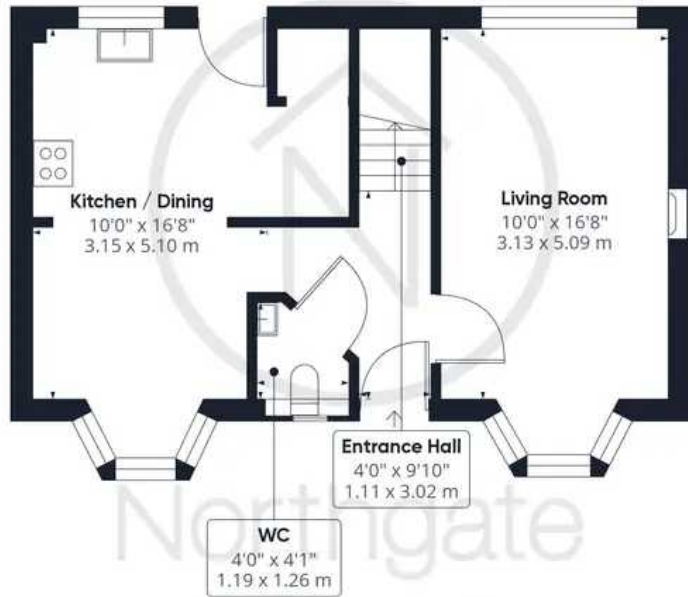
Garage:

9'0" x 18'3" (2.83 x 5.58 m)





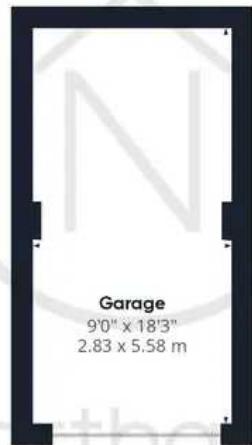




Ground Floor Building 1



Floor 1 Building 1



Ground Floor Building 2



Northgate
estate agents

Approximate total area⁽¹⁾

1117.51 ft²

103.82 m²

(1) Excluding balconies and terraces

While every attempt has been made to ensure accuracy, all measurements are approximate, not to scale. This floor plan is for illustrative purposes only.

GIRAFFE360



Northgate - County Durham

Northgate Estate Agents, Suite 3 - DL5 4DH

01325 728333 • info@northgates.net • www.northgates.co.uk/



These particulars do not constitute, nor constitute part of, an offer or contract. No warranties are provided. Verify details through inspection. Northgate estate agents, nor any person in their employment has any authority to make or give any representation or warranty whatever in the relation to this property. All measurements are approximate.