



Northside
For Sale
01325 728993

Eden Grove, Middridge

Newton Aycliffe



Offers in Region of £330,000



22 Eden Grove

Middridge, Newton Aycliffe

4-Bedroom Detached Family Home in Village Location - Discover your dream home in the charming village of Middridge, where countryside tranquility meets modern convenience. This substantial four-bedroom detached house offers generous living spaces and breathtaking views across farmland.

The spacious lounge provides a perfect setting for family gatherings, while the elegant dining room, featuring French doors to the rear garden, offers ample space for large family meals. The modern kitchen is fitted with oak-effect cabinets and integrated appliances, with direct access to the garden.

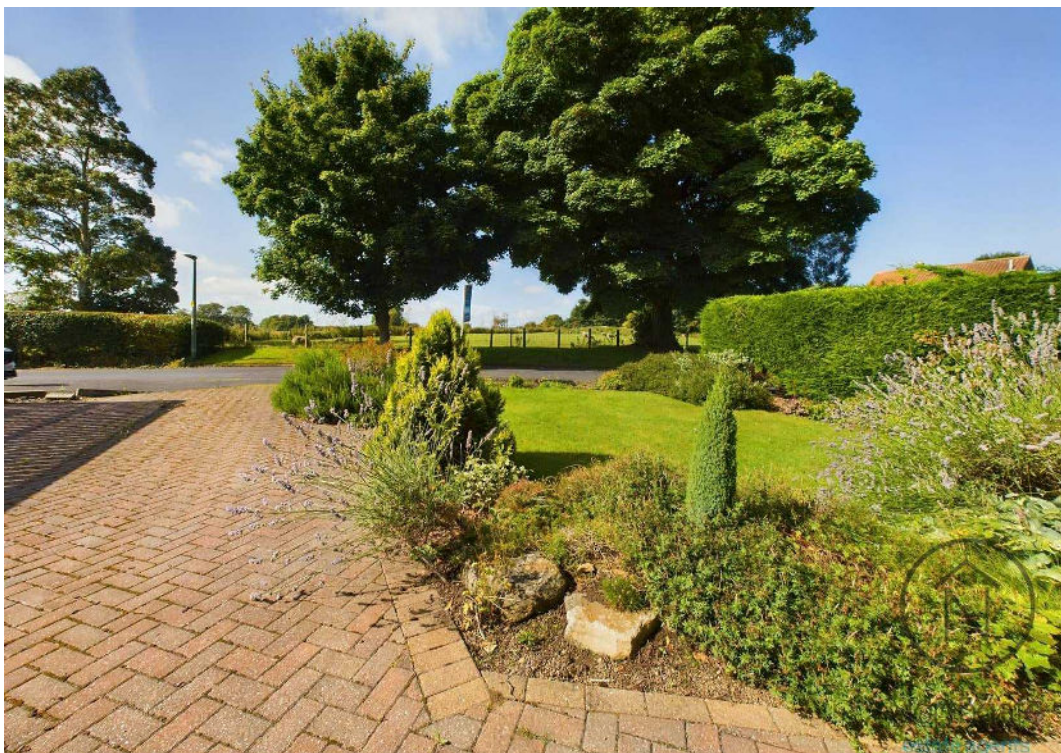
The first floor comprises four generous bedrooms, including a spacious master bedroom with front views and a second double bedroom overlooking the rear garden. The family bathroom is fitted with a white suite, Ensuite Shower area to bedroom Four.

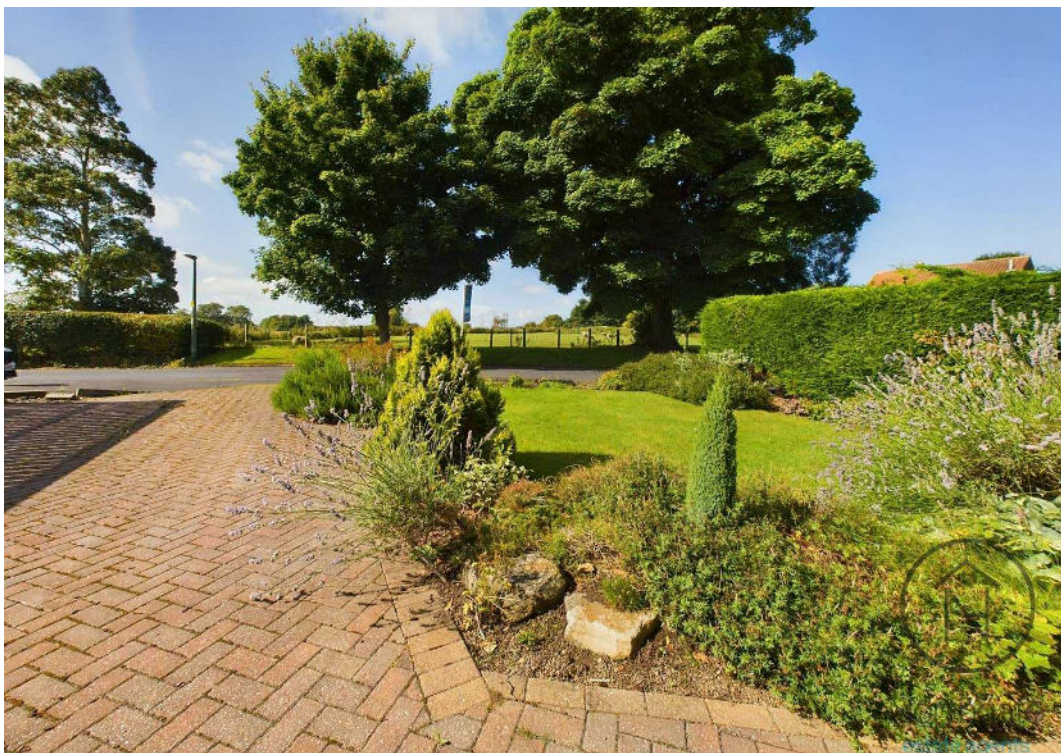
The property's gardens are a standout feature, designed to provide both beauty and tranquility. The mature rear garden is a private oasis, brimming with a variety of established trees and shrubs that create a lush, green retreat perfect for outdoor relaxation or entertaining guests. Whether you're enjoying a sunny afternoon with family or hosting a summer barbecue, this garden is sure to impress. The property also features off-street parking with a garage and a well-maintained front garden with countryside views.

Enjoy the essence of village life with a village green, well-regarded country pub, restaurant, and beautiful country walks, while being conveniently close to the towns of Newton Aycliffe, Darlington, Shildon & Bishop Auckland. Don't miss the opportunity to make this beautiful property











Northgate
estate agents

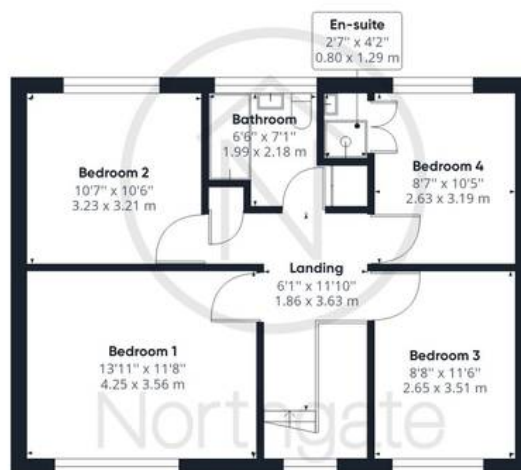


Ground Floor

Approximate total area⁽¹⁾

1526.49 ft²

141.82 m²



Floor 1

(1) Excluding balconies and terraces

While every attempt has been made to ensure accuracy, all measurements are approximate, not to scale. This floor plan is for illustrative purposes only.

GIRAFFE 360



Northgate - County Durham

Northgate Estate Agents, Suite 3 - DL5 4DH

01325 728333 • info@northgates.net • www.northgates.co.uk/



These particulars do not constitute, nor constitute part of, an offer or contract. No warranties are provided. Verify details through inspection. Northgate estate agents, nor any person in their employment has any authority to make or give any representation or warranty whatever in the relation to this property. All measurements are approximate.