



Millwood, Chilton

Ferryhill



Offers Over £250,000



22 Millwood

Chilton, Ferryhill

Offer invited between £250,000 - £260,000, Stunning Four Bedroom Detached Family Home. Are you looking for the perfect family home? Look no further! This beautiful four-bedroom detached property is nestled on a well-presented street in the village of Chilton. Boasting a convenient location close to shops, schools, and public transport routes, with Durham city centre just a short 15-minute drive away, this home offers both comfort and accessibility.

In brief the home comprises:

- Spacious four-bedroom detached house
- Welcoming entrance hall
- Versatile study/reception room
- Bright and inviting living room
- Elegant dining room
- Well-appointed kitchen
- Convenient utility room
- Downstairs WC for added convenience

First Floor:

- Expansive master bedroom with abundant natural light, with built in wardrobes for ample storage and a modern en-suite bathroom.
- Three additional generously sized bedrooms
- Stylish family bathroom with modern fixtures

This property is ideal for families seeking both space and convenience. With its spacious living areas, beautifully maintained gardens, and proximity to essential amenities, you'll find everything you need for a comfortable and enjoyable family life

- Large Four Bed Detached On A Corner Plot
- Immaculate Throughout
- 3 Reception Rooms



Hallway

5' 7" x 5' 3" (1.70m x 1.60m)

Office/Reception Room

10' 8" x 9' 8" (3.25m x 2.94m)

Dining Room

8' 11" x 10' 8" (2.72m x 3.25m)

Living Room

17' 8" x 12' 3" (5.38m x 3.73m)

Kitchen

9' 11" x 13' 1" (3.02m x 3.98m)

Utility Room

5' 6" x 9' 8" (1.68m x 2.94m)

Wc

5' 6" x 2' 11" (1.68m x 0.89m)

Landing

3' 2" x 11' 5" (0.96m x 3.48m)

Master Bedroom

En-suite

5' 10" x 5' 3" (1.78m x 1.60m)

Bedroom 2

12' 4" x 10' 0" (3.76m x 3.05m)

Bedroom 3

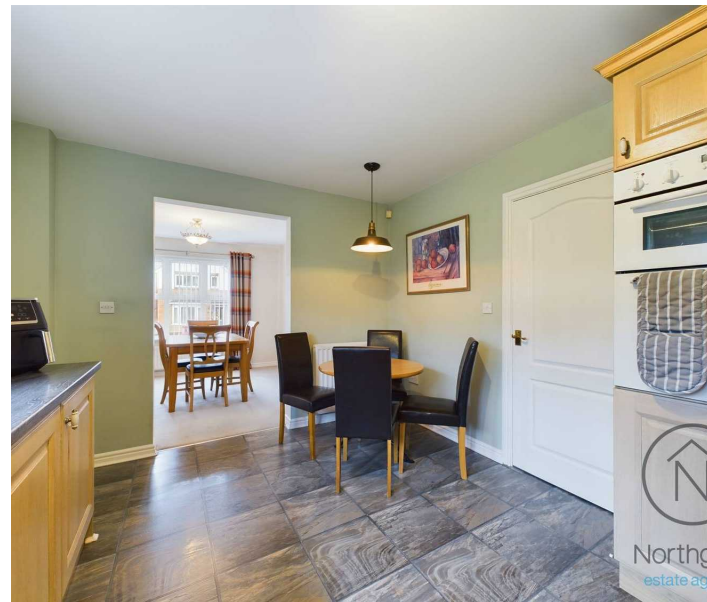
8' 9" x 9' 11" (2.66m x 3.02m)

Bedroom 4

9' 0" x 6' 10" (2.74m x 2.08m)

Bathroom

7' 11" x 6' 9" (2.41m x 2.06m)





Garden

Large front gardens mainly laid to lawn, enclosed rear gardens laid to lawn with patio areas

External Features:

- Large front and side gardens, perfect for outdoor activities
- Manicured lawns create a serene atmosphere
- Off-street parking for several cars
- Garage accessible via the kitchen
- Enclosed rear gardens with a delightful patio seating area

Garage

11' 11" x 16' 11" (3.63m x 5.15m)

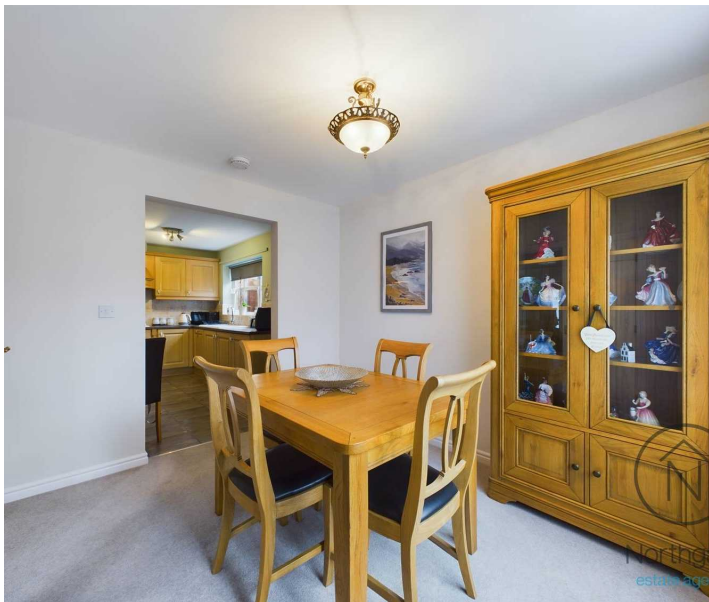
Driveway

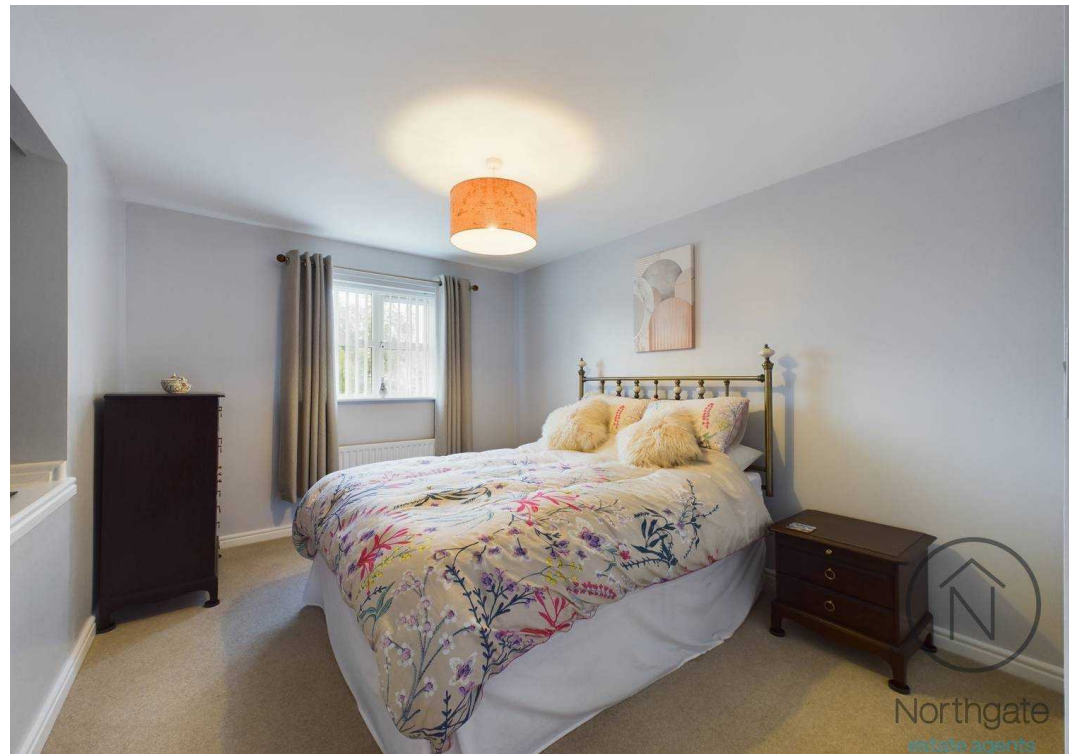
4 Parking Spaces

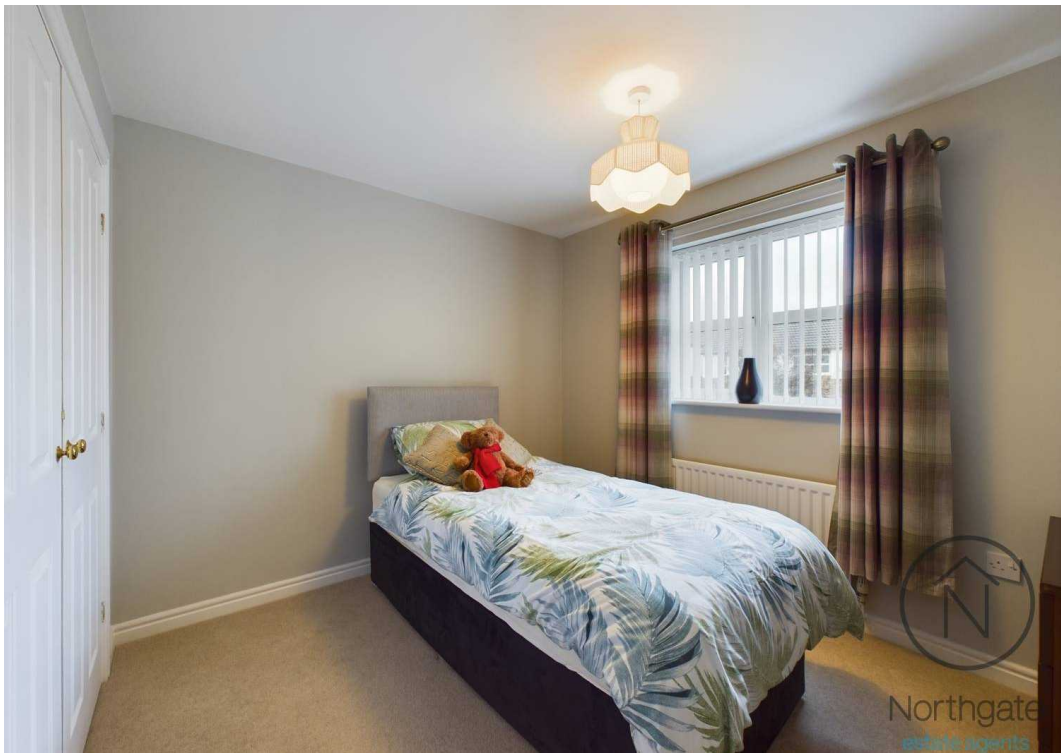
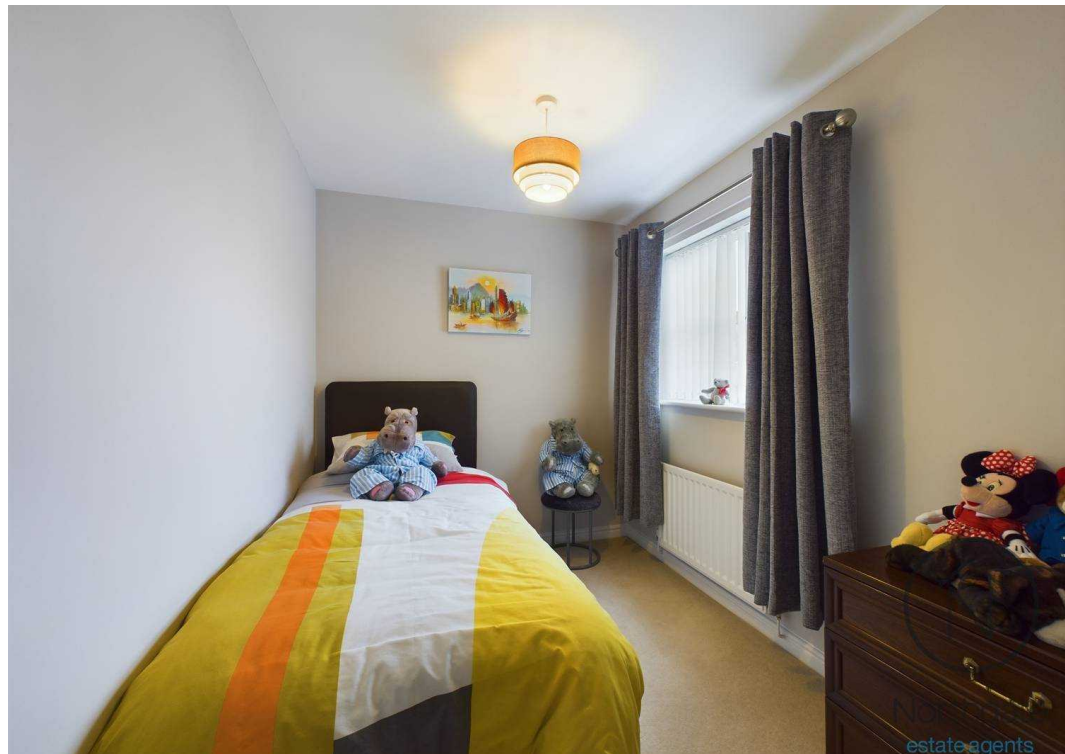
Please call the office for more information or to arrange a viewing.

Council Tax band: D

Tenure: Freehold









Northgate
estate agents



Ground Floor



Floor 1

Approximate total area⁽¹⁾

1463.17 ft²

135.93 m²

Reduced headroom

0.83 ft²

0.08 m²

(1) Excluding balconies and terraces

⌊ Reduced headroom
(below 1.5m/4.92ft)

While every attempt has been made to ensure accuracy, all measurements are approximate, not to scale. This floor plan is for illustrative purposes only.

GIRAFFE 360



Northgate - County Durham

Northgate Estate Agents, Suite 3 - DL5 4DH

01325 728333 • info@northgates.net • www.northgates.co.uk/



These particulars do not constitute, nor constitute part of, an offer or contract. No warranties are provided. Verify details through inspection. Northgate estate agents, nor any person in their employment has any authority to make or give any representation or warranty whatever in the relation to this property. All measurements are approximate.